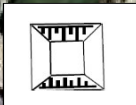


**Location 1.** Concept plan treatment at the intersection of Croydon Road and Elizabeth Street, Croydon. NOT TO SCALE





Provide speed cushion in Croydon Rd in approach to Anthony Street.

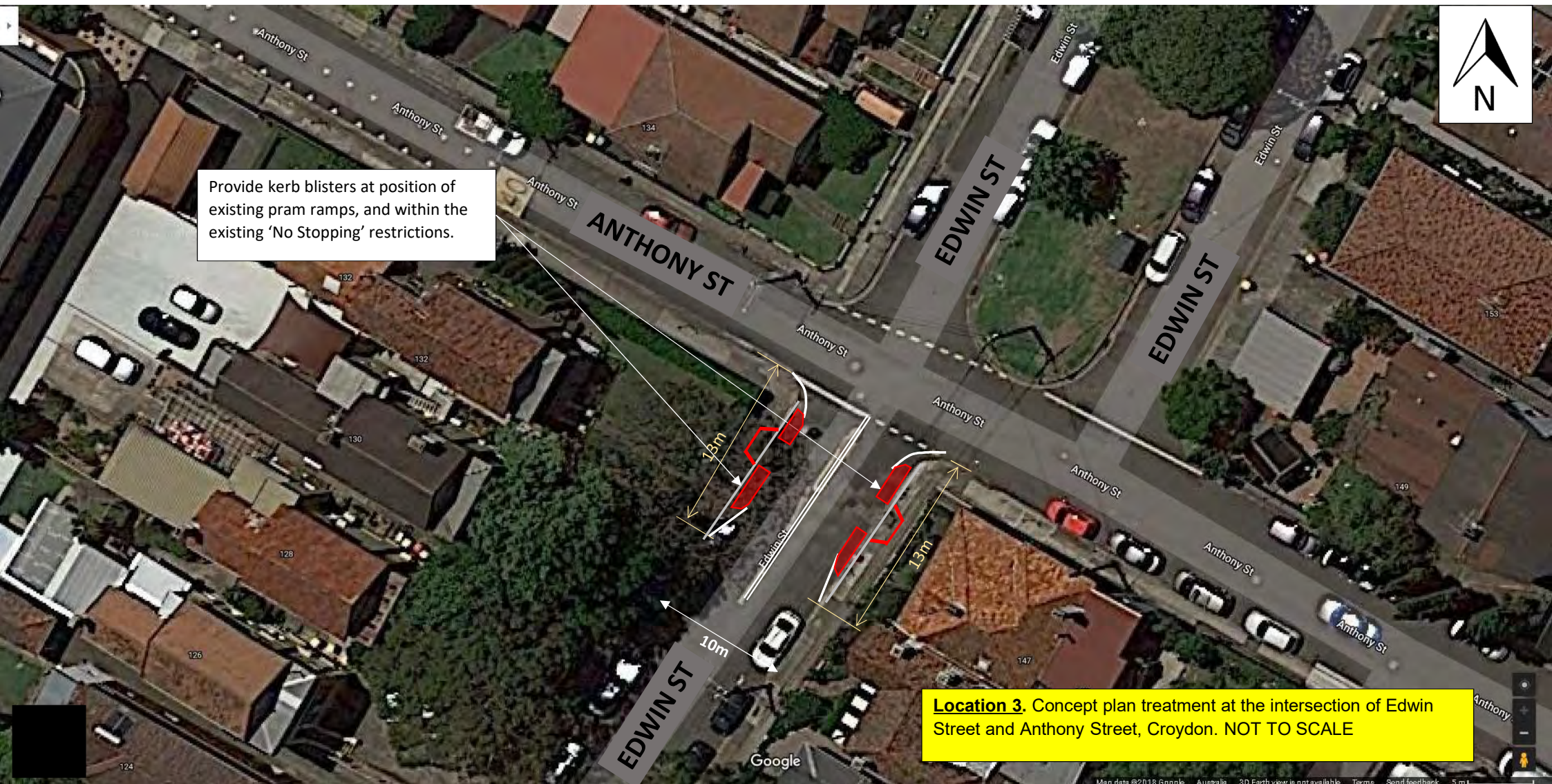
Council approved yellow line marking to front of kerb dictating 'No Stopping' clearance to roundabout. This work will be done independent of the proposed physical treatment of the intersection.

Remove concrete splitter island in Anthony Street and replace with painted splitter island.

Widen and modify splitter island for refuge opening 2m wide by 3m long, and provide new pram ramps set back into Croydon Road. 20 metres 'No Stopping' restrictions will need to be required in approach (extended out to approximately the side house boundary of No18 & 20 Croydon Road), and 10 metres on the departure side of the refuge island opening.

**Location 2.** Concept plan treatment at the intersection of Anthony Street and Croydon Road, and provide 'No Stopping' restrictions at laneway intersection with Anthony Street, Croydon. NOT TO SCALE

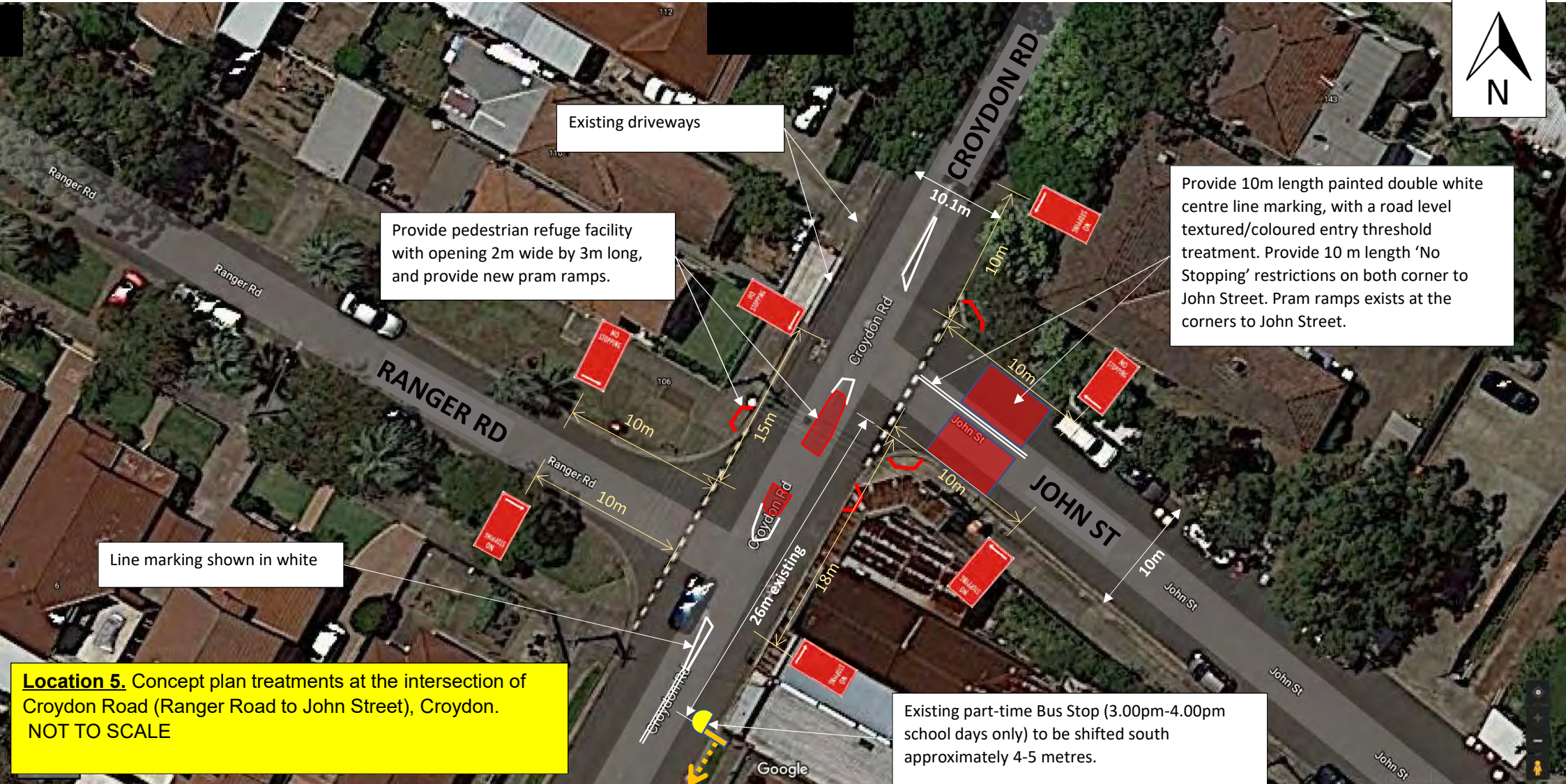












Provide pedestrian refuge facility with opening 2m wide by 3m long, and provide new pram ramps.

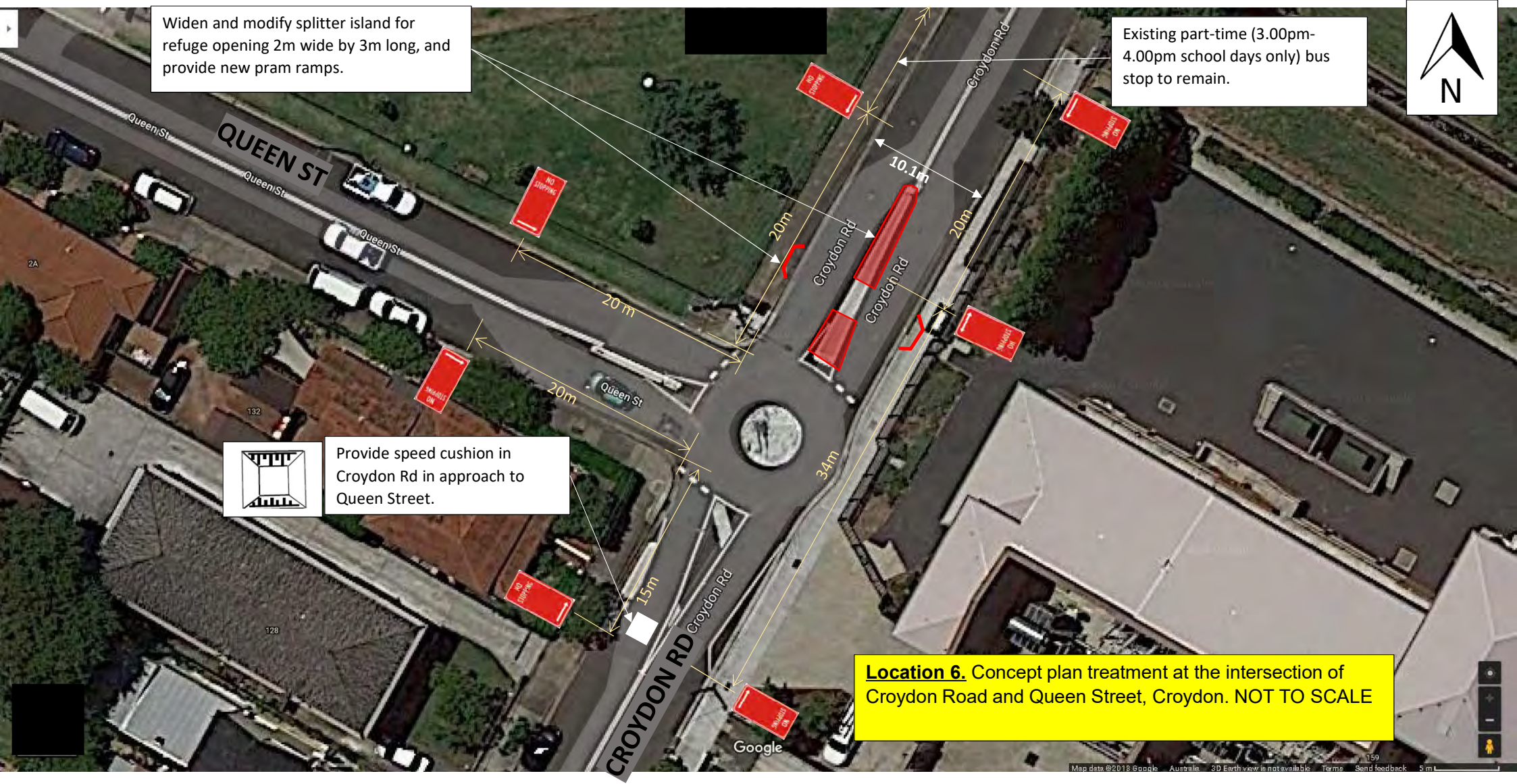
Provide 10m length painted double white centre line marking, with a road level textured/coloured entry threshold treatment. Provide 10 m length 'No Stopping' restrictions on both corner to John Street. Pram ramps exists at the corners to John Street.

Line marking shown in white

**Location 5.** Concept plan treatments at the intersection of Croydon Road (Ranger Road to John Street), Croydon.  
NOT TO SCALE

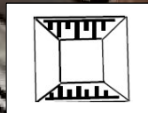
Existing part-time Bus Stop (3.00pm-4.00pm school days only) to be shifted south approximately 4-5 metres.





Widen and modify splitter island for refuge opening 2m wide by 3m long, and provide new pram ramps.

Existing part-time (3.00pm-4.00pm school days only) bus stop to remain.

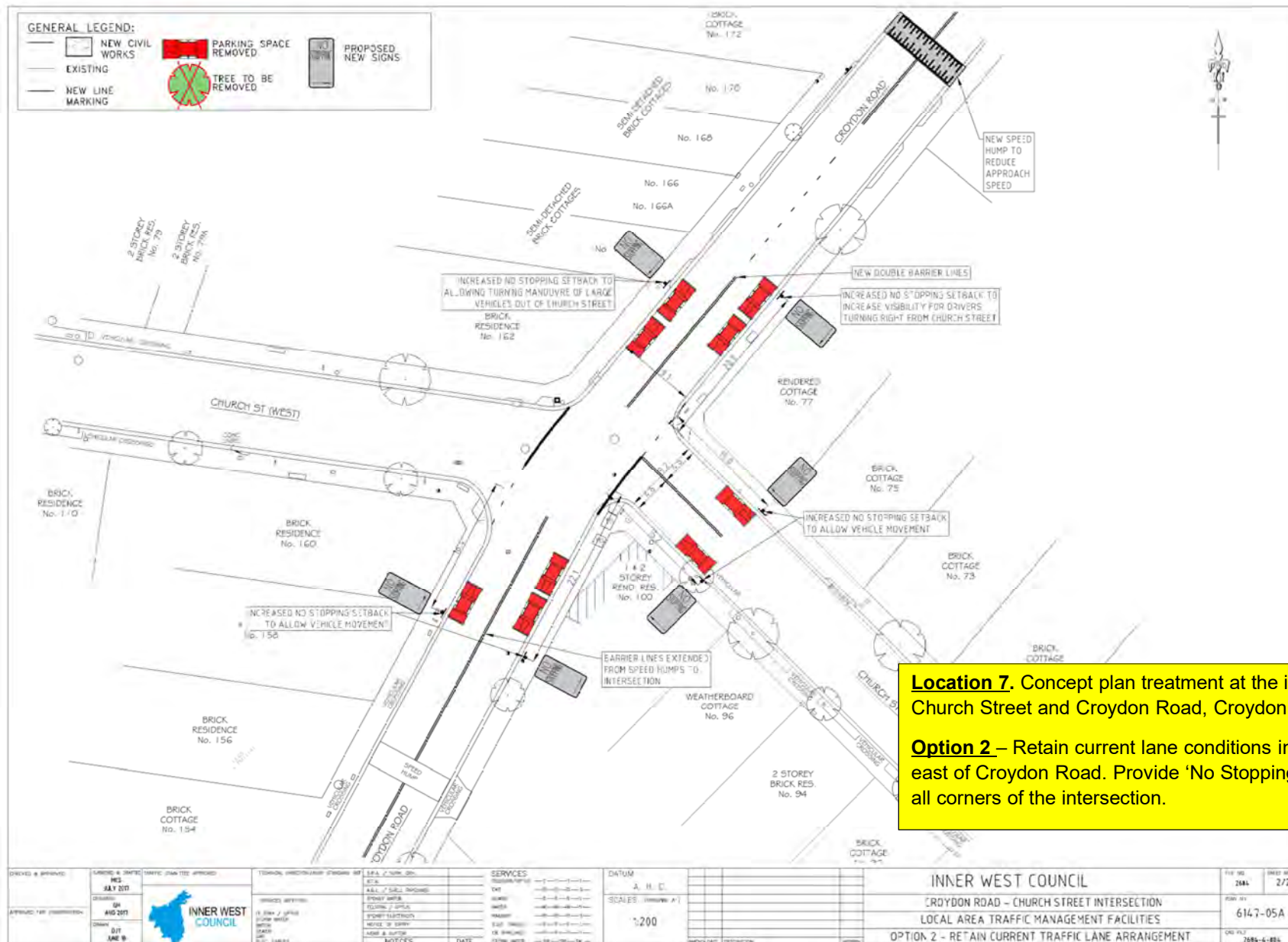


Provide speed cushion in Croydon Rd in approach to Queen Street.

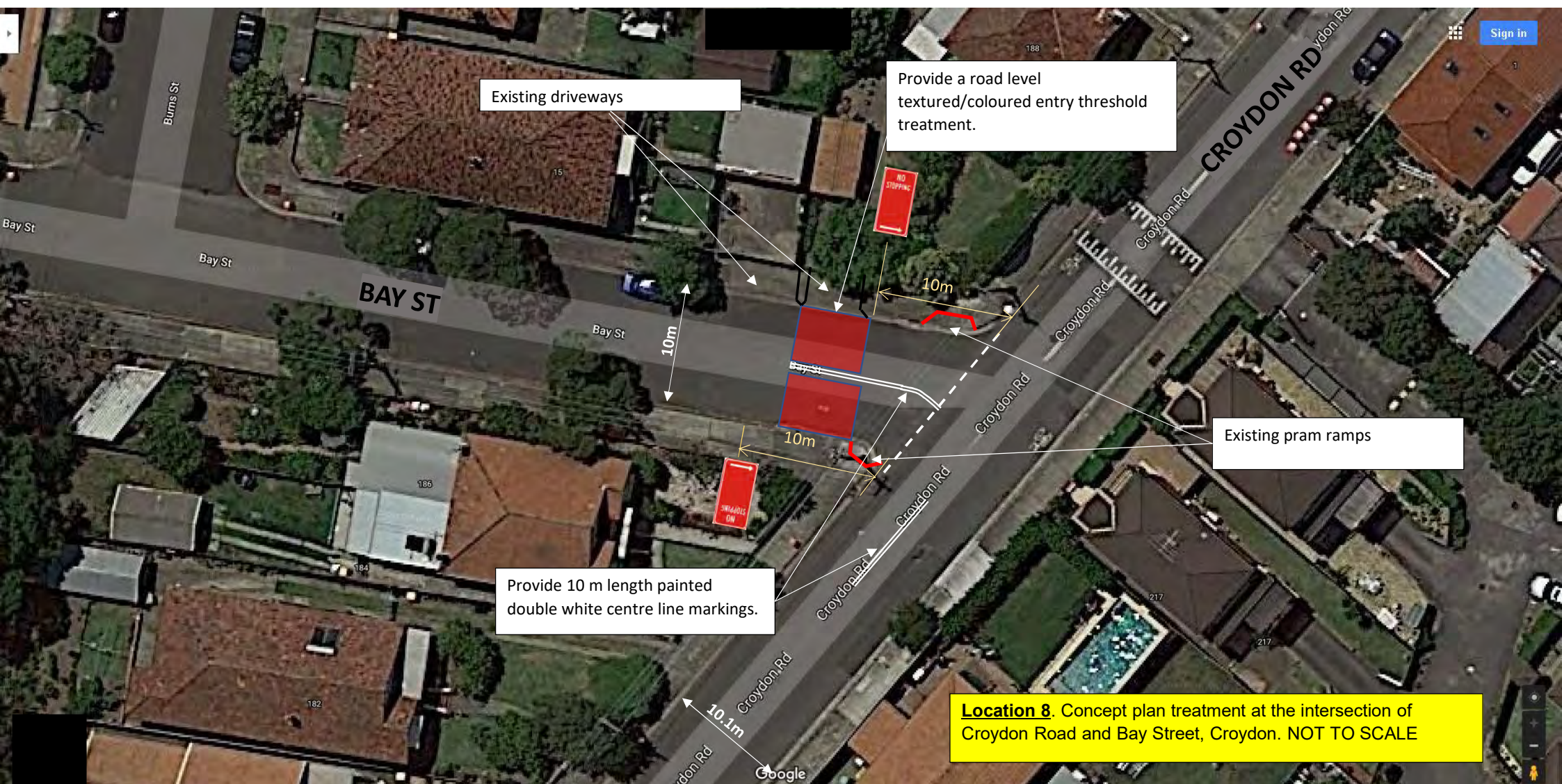
**Location 6.** Concept plan treatment at the intersection of Croydon Road and Queen Street, Croydon. NOT TO SCALE











Existing driveways

Provide a road level textured/coloured entry threshold treatment.

Existing pram ramps

Provide 10 m length painted double white centre line markings.

**Location 8.** Concept plan treatment at the intersection of Croydon Road and Bay Street, Croydon. NOT TO SCALE



