

Have your say on future land use planning

your say
Inner West



Have your say
closes 27 October

yoursay.innerwest.nsw.gov.au

 **INNER WEST
COUNCIL**

Council is leading a positive shift towards sustainable urban living and a resilient Inner West through the **Local Strategic Planning Statement**. This will guide land use in the Inner West over the next 20 years.

Our Place Inner West
is Council’s local strategic planning statement, that will support local character, productivity and quality of life.

Vision
A place of creative, connected, sustainable and productive neighbourhoods - as vibrant, innovative and diverse as our community.

Ecologically sustainable Inner West



Transitioning to renewable energy



Water sensitive developments, healthy waterways



Resilience to climate change impacts



Reduce reliance on Sydney’s drinking water



Zero carbon emissions developments, low carbon precincts



Zero waste with a circular economy

NEIGHBOURHOOD
VALUES SURVEY

EVIDENCE-BASED
STRATEGIES

LOCAL STRATEGIC
PLANNING STATEMENT

CONSO
FOR
COUNCI
ENVIRON
PLA

Unique, liveable, networked neighbourhoods



High quality, accessible and sustainable housing in appropriate locations



Ecologically sustainable, resilient housing with amenity for residents and neighbourhood



Respect place, local character and heritage significance



Increase housing diversity, universal design for access and affordability



Diverse, functional, safe, enjoyable urban spaces connected with and enhanced by surroundings

VALIDATE
MER
L LOCAL
ENVIRONMENTAL
PLANS

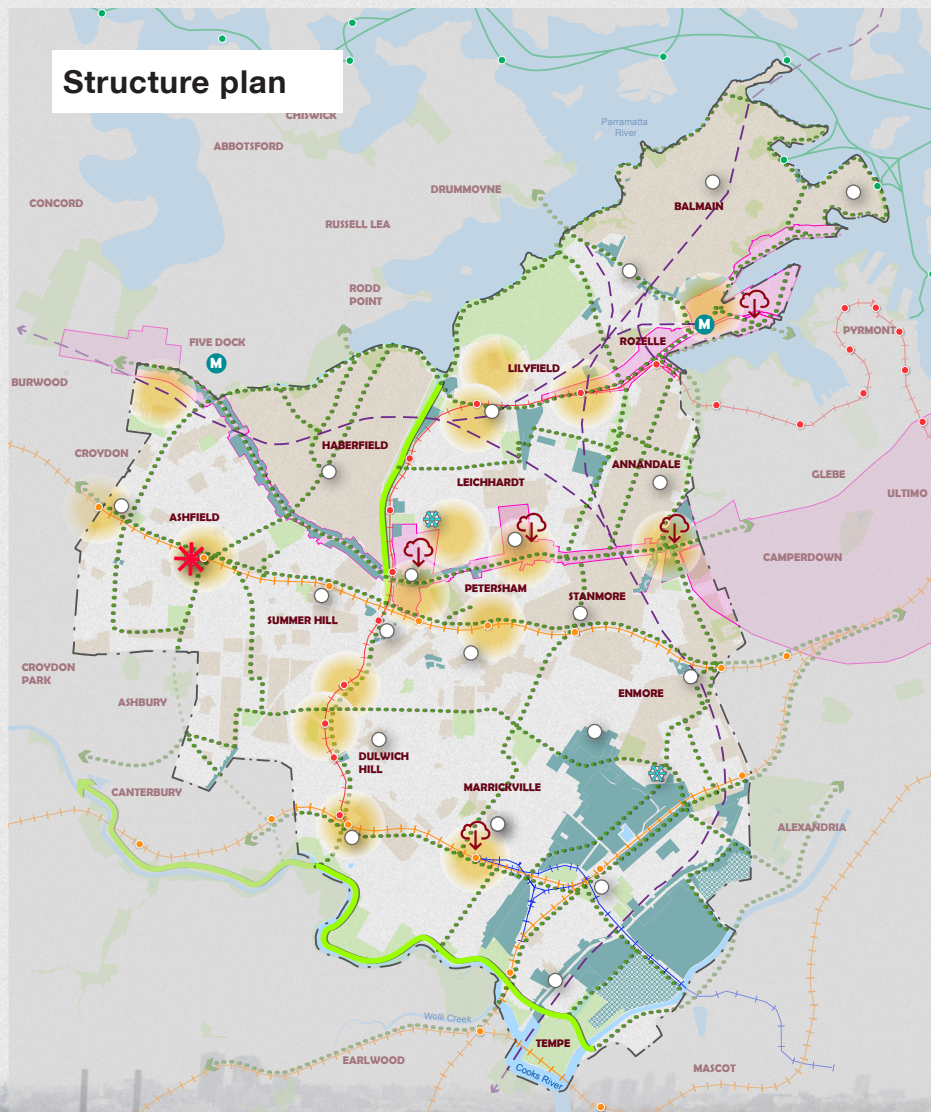
DEVELOPMENT
CONTROL PLAN

DEVELOPMENT
CONTRIBUTIONS PLAN

NEW LOCAL
ENVIRONMENTAL
PLAN INFORMED BY
PLACE STUDIES



Structure plan



Legend

[] Inner West Council LGA

● Ferry Wharf

● Railway Station

● Light Rail Stop

--- Heavy Railway Line

--- Light Railway Line

--- Freight Line

--- Ferry Routes

■ Parks / Open Spaces

● Housing Investigation Areas

○ Local Centres / Urban Hubs

★ Major Centre

● Indicative Future Metro West Stations

● Low Carbon Precincts

★ Specific Sites from 2026

--- Future Blue/Green Links

--- Existing Blue/Green Links

--- WestConnex Alignment

■ Key Employment Lands

■ Gate Way Sites

■ Heritage Conservation

■ Major Transformation Areas

Sustainable Transport

Benefits of active transport



More active & passive surveillance, reduced crime



Increased sense of community and belonging



Improved health from more active lifestyles



Higher retail spending, good for business



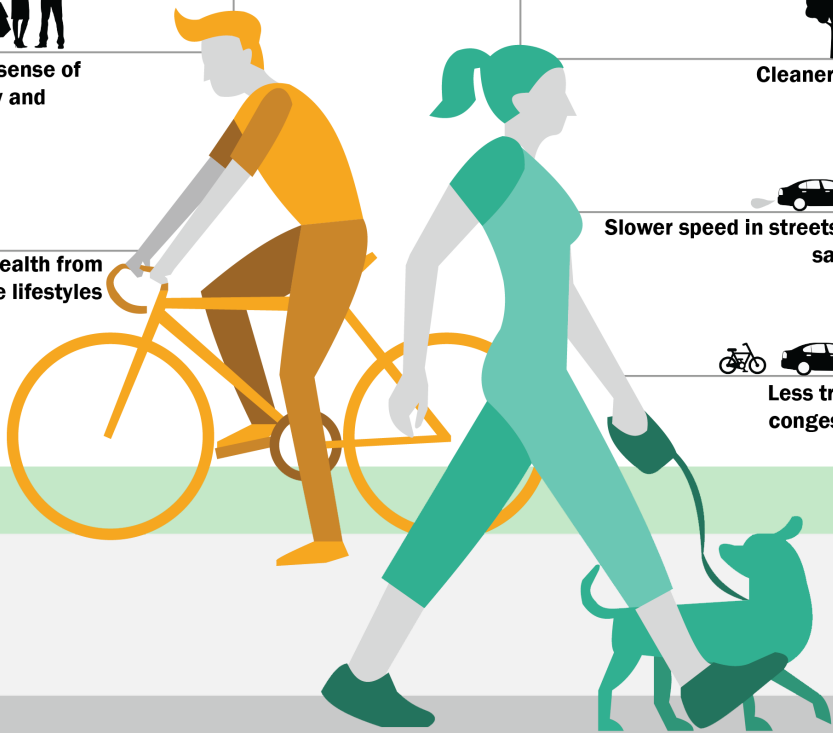
Cleaner air



Slower speed in streets for safety



Less traffic congestion



Sustainable Transport

Transport Hierarchy



1. People first



2. Improved, accessible active transport infrastructure



3. Improve public transport, embrace emerging transport technology



4. Support an efficient freight, logistics and service delivery network



5. Support shared transport and smart parking management



Creative communities and a strong economy



Diverse, strong resilient local economy and thriving night time economy



Protect industrial land and accommodate affordable entry points for a range of industries



Foster creative industries and cultural production



Distinct and enjoyable main streets and urban hubs



New development respects place, local character, values and heritage





Caring, happy, healthy communities. Progressive local leadership.



Recognise and sustain Aboriginal and Torres Strait Island cultures and histories



Council engages and listens to community



Safe, inclusive, accessible, active, healthy urban environment



Diverse, strong stakeholder relationships to deliver positive planning outcomes

**Have your say
closes 27 October**

yoursay.innerwest.nsw.gov.au

