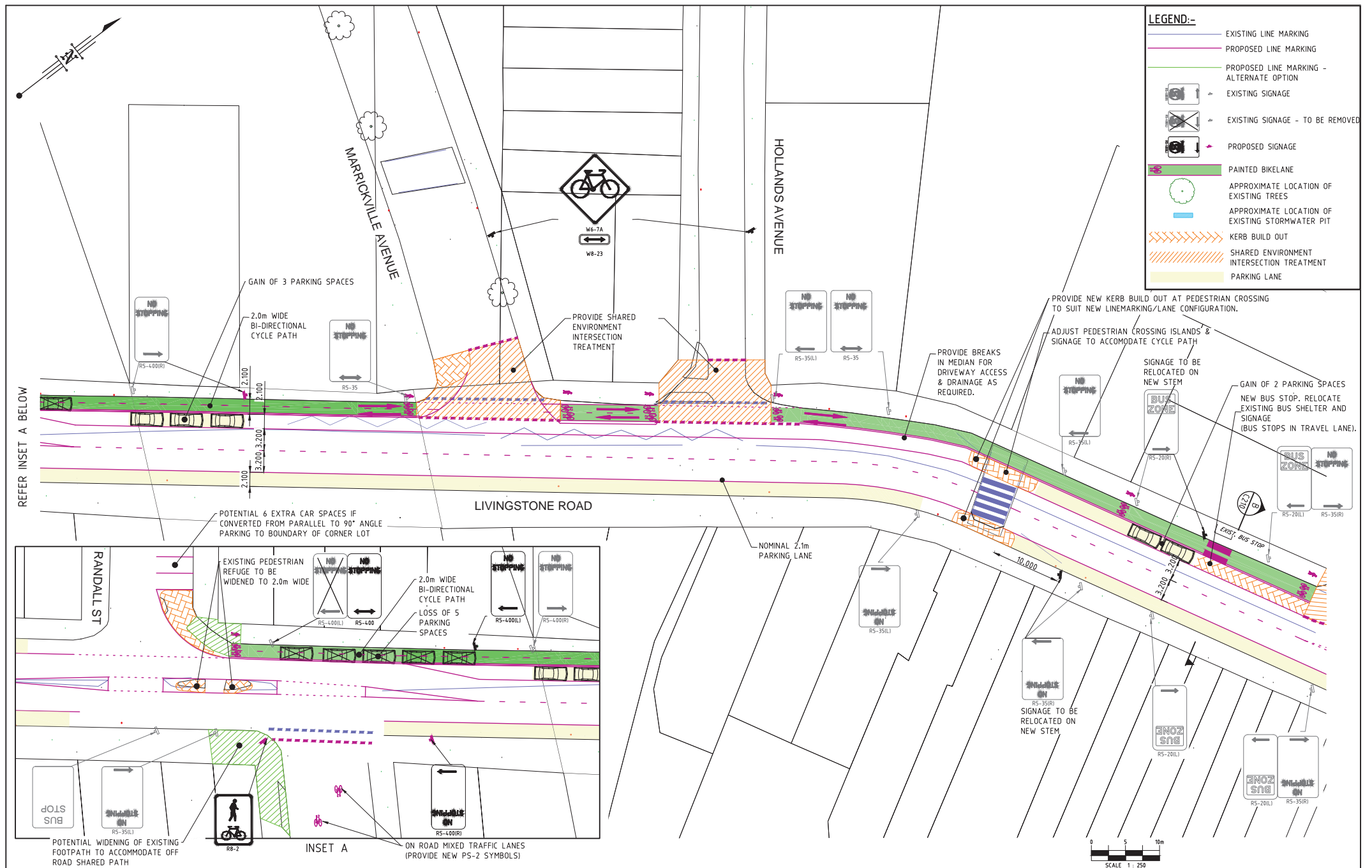


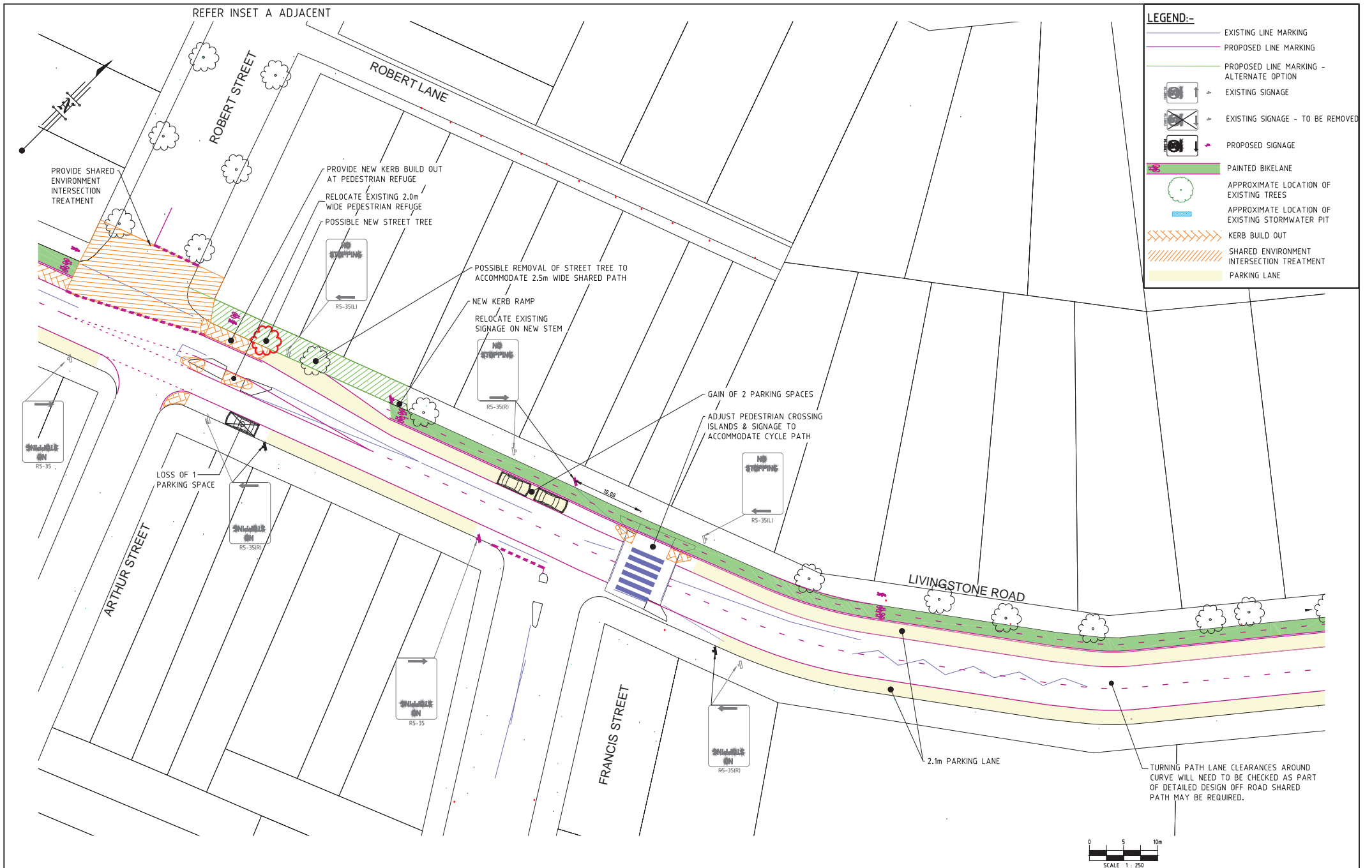
F	03.11.16	S.G.	REVISED FINAL CONCEPT ISSUE	
E	17.10.16	S.G.	FINAL CONCEPT ISSUE	
D	03.05.2016	S.G.	SYDNEY BUSES AMENDMENT	
C	27.04.16	S.G.	CONCEPT ISSUE	
B	20.04.16	AST	REVISED DRAFT	
A	11.04.16	S.G.	DRAFT	
No.	Date	By	Amendment	Checked

Project:	PROPOSED BICYCLE ROUTE CONCEPT DESIGN MARRICKVILLE
Title:	STUDY AREA 2 (LR3) OVERALL KEY PLAN



LEGEND:-	
	EXISTING LINE MARKING
	PROPOSED LINE MARKING
	PROPOSED LINE MARKING - ALTERNATE OPTION
	EXISTING SIGNAGE
	EXISTING SIGNAGE - TO BE REMOVED
	PROPOSED SIGNAGE
	PAINTED BIKELANE
	APPROXIMATE LOCATION OF EXISTING TREES
	APPROXIMATE LOCATION OF EXISTING STORMWATER PIT
	KERB BUILD OUT
	SHARED ENVIRONMENT INTERSECTION TREATMENT
	PARKING LANE

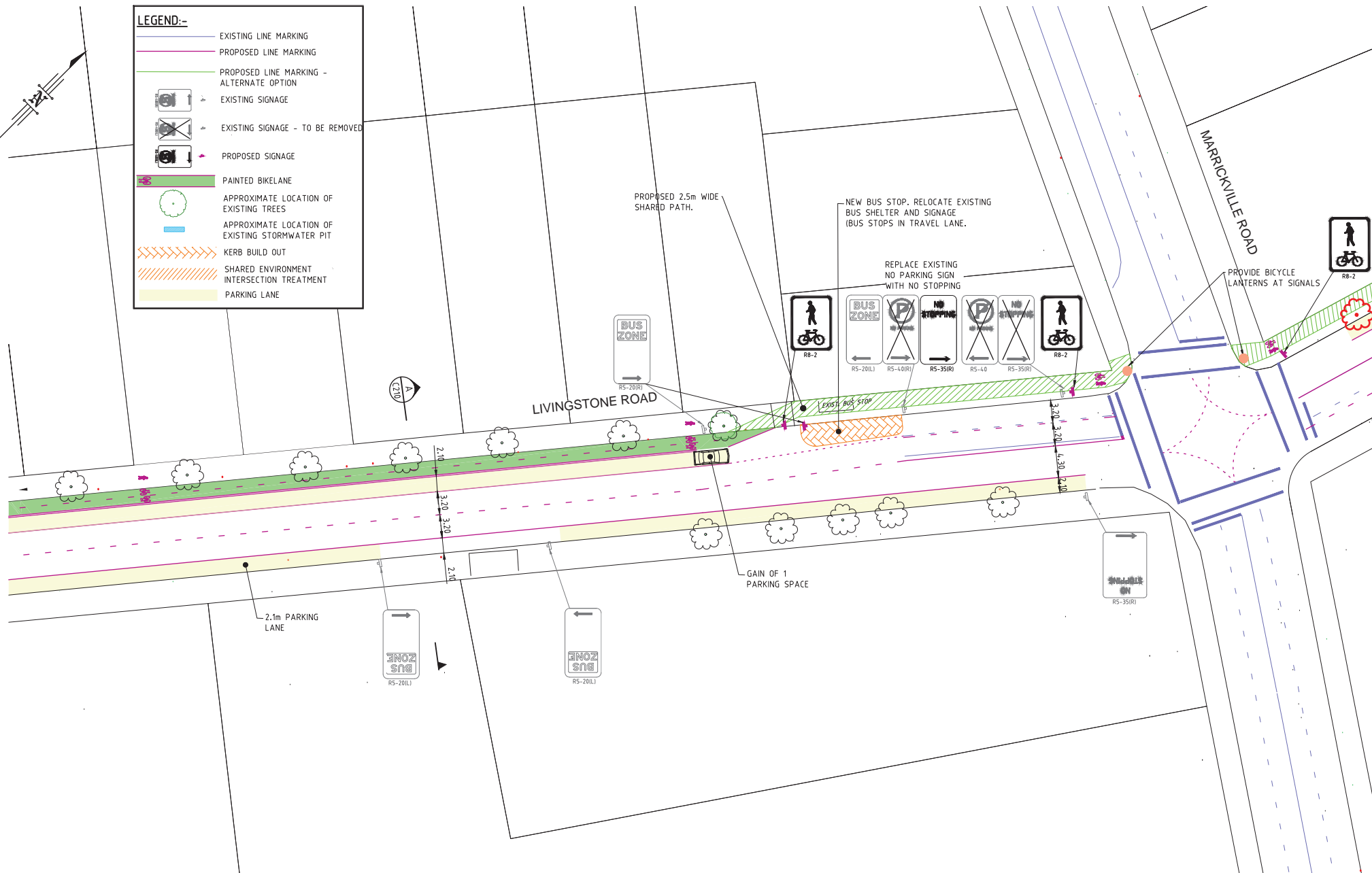
<p>THIS DESIGN AND DRAWING IS COPYRIGHT. NO PART OF THIS DRAWING MAY BE REPRODUCED, STORED IN A RETRIEVAL SYSTEM OR TRANSMITTED IN ANY FORM WITHOUT THE WRITTEN PERMISSION OF LAMBERT & REHBEIN PTY LTD.</p>					<div><div><div><div><div></div><div></div></div><div><div></div><div></div></div></div><div><div><div>LAMBERT & REHBEIN</div><div>ENGINEERS • MANAGERS • SCIENTISTS</div></div><div><div><div>CBD HOUSE LEVEL 3, 120 WICKHAM STREET FORTITUDE VALLEY QLD 4006 P.O. BOX 12 FORTITUDE VALLEY QLD 4006 A.C.N. 010 451 902</div><div><div>TELEPHONE (07) 3250 9000 FACSIMILE (07) 3250 9001 EMAIL mail@lar.net.au</div></div></div><div></div></div></div></div></div>		<div>Project: PROPOSED BICYCLE ROUTE CONCEPT DESIGN MARRICKVILLE</div> <div>Title: STUDY AREA 2 (LR3) LAYOUT PLAN SHEET 1 OF 9</div>		<div>Client: MARRICKVILLE COUNCIL</div> <table><tr><td>Draftsperson: SG</td><td>Checked: DL</td><td>Sheet A1</td><td>Drawing No. B16049-C201</td></tr><tr><td>Designer: SG</td><td>Approved: A.PEZZUTTI RPEQ No. 6362</td><td>Date: MAR 2016</td><td></td></tr><tr><td>Scale: AS SHOWN</td><td></td><td></td><td></td></tr></table>				Draftsperson: SG	Checked: DL	Sheet A1	Drawing No. B16049-C201	Designer: SG	Approved: A.PEZZUTTI RPEQ No. 6362	Date: MAR 2016		Scale: AS SHOWN			
Draftsperson: SG	Checked: DL	Sheet A1	Drawing No. B16049-C201																					
Designer: SG	Approved: A.PEZZUTTI RPEQ No. 6362	Date: MAR 2016																						
Scale: AS SHOWN																								
No.	Date	By	Amendment	Checked																				
F	03.11.16	S.G.	REVISED FINAL CONCEPT ISSUE																					
E	17.10.16	S.G.	FINAL CONCEPT ISSUE																					
D	03.05.2016	S.G.	SYDNEY BUSES AMENDMENT																					
C	27.04.16	S.G.	CONCEPT ISSUE																					
B	20.04.16	AST	REVISED DRAFT																					
A	11.04.16	S.G.	DRAFT																					



THIS DESIGN AND DRAWING IS COPYRIGHT. NO PART OF THIS DRAWING MAY BE REPRODUCED, STORED IN A RETRIEVAL SYSTEM OR TRANSMITTED IN ANY FORM WITHOUT THE WRITTEN PERMISSION OF LAMBERT AND REHBEIN PTY. LTD.					<div><div><div><div><div><div></div><div></div></div><div><div></div><div></div></div></div><div><div><div></div><div></div></div><div><div></div><div></div></div></div><div><div><div></div><div></div></div><div><div></div><div></div></div></div><div><div><div></div><div></div></div><div><div></div><div></div></div></div></div><div>LAMBERT & REHBEIN</div><div>ENGINEERS • MANAGERS • SCIENTISTS</div></div><div><div><div><div>CBD HOUSE</div><div>LEVEL 3, 120 WICKHAM STREET</div><div>FORTITUDE VALLEY QLD 4006</div><div>P.O. BOX 12 FORTITUDE VALLEY QLD 4006</div><div>A.C.N. 010 451 902</div></div><div><div>TELEPHONE (07) 3250 9000</div><div>FACSIMILE (07) 3250 9001</div><div>EMAIL mail@lar.net.au</div></div></div><div><div></div><div></div></div></div><div><div>Project: PROPOSED BICYCLE ROUTE CONCEPT DESIGN MARRICKVILLE</div><div>Title: STUDY AREA 2 (LR3) LAYOUT PLAN SHEET 2 OF 9</div></div><div><div>Client: MARRICKVILLE COUNCIL</div><div><div><div>Draftsperson: SG</div><div>Checked: DL</div></div><div><div>Sheet Size A1</div><div>Drawing No. B16049-C202</div></div></div><div><div><div>Designer: SG</div><div>Approved: RPED No. A.PEZZUTTI 6382</div></div><div><div>Scale: AS SHOWN</div><div>Date: MAR 2016</div></div></div><div><div><div>A</div><div>B</div><div>C</div><div>D</div><div>E</div><div>F</div></div></div></div></div> <tr><td>F</td><td>03.11.16</td><td>S.G.</td><td>REVISED FINAL CONCEPT ISSUE</td><td></td><td colspan="3"></td></tr> <tr><td>E</td><td>17.10.16</td><td>S.G.</td><td>FINAL CONCEPT ISSUE</td><td></td><td colspan="3"></td></tr> <tr><td>D</td><td>03.05.2016</td><td>S.G.</td><td>SYDNEY BUSES AMENDMENT</td><td></td><td colspan="3"></td></tr> <tr><td>C</td><td>27.04.16</td><td>S.G.</td><td>CONCEPT ISSUE</td><td></td><td colspan="3"></td></tr> <tr><td>B</td><td>20.04.16</td><td>AST</td><td>REVISED DRAFT</td><td></td><td colspan="3"></td></tr> <tr><td>A</td><td>11.04.16</td><td>S.G.</td><td>DRAFT</td><td></td><td colspan="3"></td></tr> <tr><td>No.</td><td>Date</td><td>By</td><td>Amendment</td><td>Checked</td><td colspan="3"></td></tr>		F	03.11.16	S.G.	REVISED FINAL CONCEPT ISSUE					E	17.10.16	S.G.	FINAL CONCEPT ISSUE					D	03.05.2016	S.G.	SYDNEY BUSES AMENDMENT					C	27.04.16	S.G.	CONCEPT ISSUE					B	20.04.16	AST	REVISED DRAFT					A	11.04.16	S.G.	DRAFT					No.	Date	By	Amendment	Checked			
F	03.11.16	S.G.	REVISED FINAL CONCEPT ISSUE																																																											
E	17.10.16	S.G.	FINAL CONCEPT ISSUE																																																											
D	03.05.2016	S.G.	SYDNEY BUSES AMENDMENT																																																											
C	27.04.16	S.G.	CONCEPT ISSUE																																																											
B	20.04.16	AST	REVISED DRAFT																																																											
A	11.04.16	S.G.	DRAFT																																																											
No.	Date	By	Amendment	Checked																																																										

LEGEND:-

	EXISTING LINE MARKING
	PROPOSED LINE MARKING
	PROPOSED LINE MARKING - ALTERNATE OPTION
	EXISTING SIGNAGE
	EXISTING SIGNAGE - TO BE REMOVED
	PROPOSED SIGNAGE
	PAINTED BIKELANE
	APPROXIMATE LOCATION OF EXISTING TREES
	APPROXIMATE LOCATION OF EXISTING STORMWATER PIT
	KERB BUILD OUT
	SHARED ENVIRONMENT INTERSECTION TREATMENT
	PARKING LANE



F	03.11.16	S.G.	REVISED FINAL CONCEPT ISSUE	
E	17.10.16	S.G.	FINAL CONCEPT ISSUE	
D	03.05.2016	S.G.	SYDNEY BUSES AMENDMENT	
C	27.04.16	S.G.	CONCEPT ISSUE	
B	20.04.16	AST	REVISED DRAFT	
A	11.04.16	S.G.	DRAFT	
No.	Date	By	Amendment	Checked

LAMBERT & REHBEIN
ENGINEERS • MANAGERS • SCIENTISTS

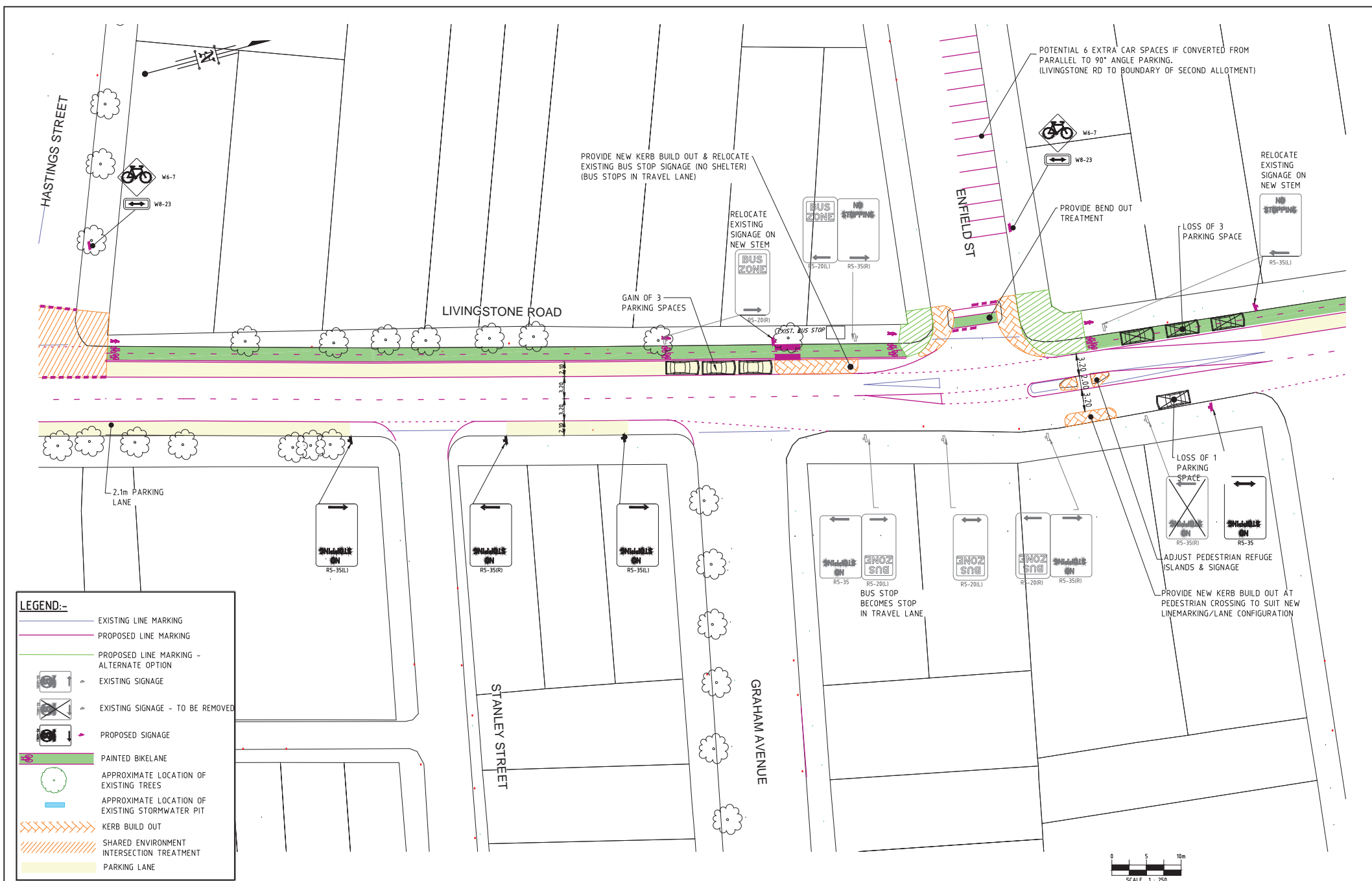
CBD HOUSE
LEVEL 3, 120 WICKHAM STREET
FORTITUDE VALLEY QLD 4006
P.O. BOX 12 FORTITUDE VALLEY QLD 4006
A.C.N. 010 451 902

TELEPHONE (07) 3250 9000
FACSIMILE (07) 3250 9001
EMAIL mail@lar.net.au

Project: PROPOSED BICYCLE ROUTE
CONCEPT DESIGN
MARRICKVILLE

Title: STUDY AREA 2 (LR3) LAYOUT
PLAN SHEET 3 OF 9

Client: MARRICKVILLE COUNCIL		Sheet Size: A1		Drawing No. B16049-C203	
Draftsperson: SG	Checked: DL	Approved: A. PEZZUTTI	RPEQ No: 6362		
Designer: SG					
Scale: AS SHOWN	Date: MAR 2016				



<div>THIS DESIGN AND DRAWING IS COPYRIGHT. NO PART OF THIS DRAWING MAY BE REPRODUCED, STORED IN A RETRIEVAL SYSTEM OR TRANSMITTED IN ANY FORM WITHOUT THE WRITTEN PERMISSION OF LAMBERT & REHBEIN PTY LTD.</div>					F 03.11.16 S.G. REVISED FINAL CONCEPT ISSUE				
					E 17.10.16 S.G. FINAL CONCEPT ISSUE				
					D 03.05.2016 S.G. SYDNEY BUSES AMENDMENT				
					C 27.04.16 S.G. CONCEPT ISSUE				
					B 20.04.16 AST REVISED DRAFT				
					A 11.04.16 S.G. DRAFT				
					No.	Date	By	Amendment	Checked

LAMBERT & REHBEIN

ENGINEERS • MANAGERS • SCIENTISTS

CBD HOUSE

LEVEL 3, 120 WICKHAM STREET

FORTITUDE VALLEY QLD 4006

P.O. BOX 12 FORTITUDE VALLEY QLD 4006

A.C.N. 010 451 902

TELEPHONE (07) 3250 9000

FACSIMILE (07) 3250 9001

EMAIL mail@lar.net.au

Project: PROPOSED BICYCLE ROUTE
CONCEPT DESIGN
MARRICKVILLE

Title: STUDY AREA 2 (LR3) LAYOUT
PLAN SHEET 5 OF 9

Client: MARRICKVILLE COUNCIL

Draftsperson: SG

Checked: DL

Sheet Size

Drawing No.

A1

B16049-C205

Designer: SG

Approved: A.PEZZUTTI
RPED No: 6362

Scale: AS SHOWN

Date: MAR 2016

A

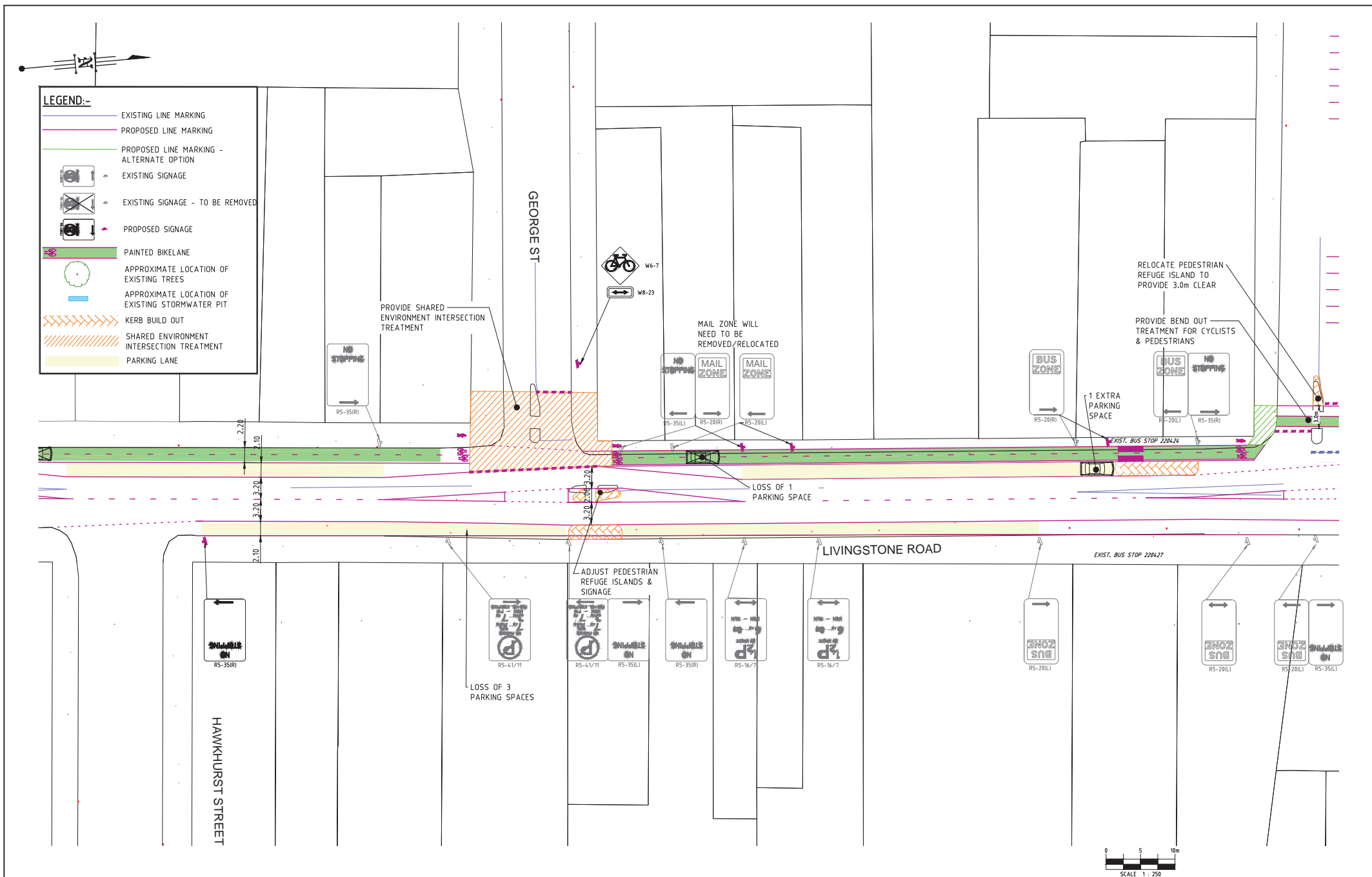
B

C

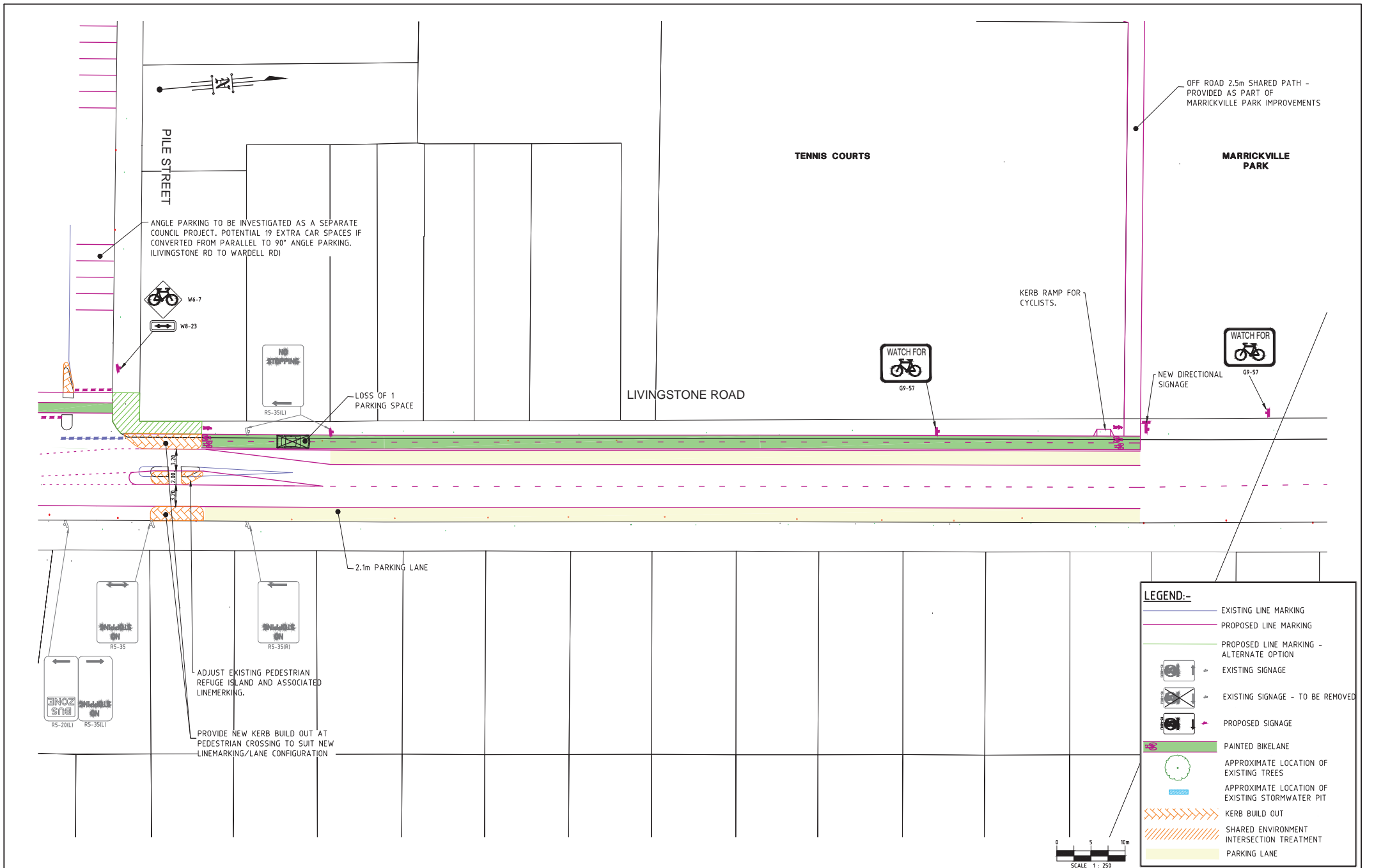
D

E

F



THIS DESIGN AND DRAWING IS COPYRIGHT. NO PART OF THIS DRAWING MAY BE REPRODUCED, STORED IN A RETRIEVAL SYSTEM OR TRANSMITTED IN ANY FORM WITHOUT THE WRITTEN PERMISSION OF LAMBERT & REHBEIN PTY. LTD.				<div><div><div><div><div></div><div></div></div><div><div></div><div></div></div></div><div>LAMBERT & REHBEIN</div><div>ENGINEERS • MANAGERS • SCIENTISTS</div></div><div><div><div><div>CBD HOUSE</div><div>LEVEL 3, 120 WICKHAM STREET</div><div>FORTITUDE VALLEY QLD 4006</div><div>P.O. BOX 12 FORTITUDE VALLEY QLD 4006</div><div>A.C.N. 010 451 902</div></div><div><div>TELEPHONE (07) 3250 9000</div><div>FACSIMILE (07) 3250 9001</div><div>EMAIL mail@lar.net.au</div></div></div><div><div><div></div><div></div></div><div></div></div></div></div>		Project: PROPOSED BICYCLE ROUTE CONCEPT DESIGN MARRICKVILLE		Client: MARRICKVILLE COUNCIL		
F	03.11.16	S.G.	REVISED FINAL CONCEPT ISSUE			Draftsperson: SG		Checked: DL	Sheet Size	Drawing No.
E	17.10.16	S.G.	FINAL CONCEPT ISSUE			Designer: SG		Approved: A.PEZZUTTI RPEQ No: 6362	A1	B16049-C206
D	03.05.2016	S.G.	SYDNEY BUSES AMENDMENT			Title: STUDY AREA 2 (LR3) LAYOUT PLAN SHEET 6 OF 9				
C	27.04.16	S.G.	CONCEPT ISSUE							
B	20.04.16	AST	REVISED DRAFT							
A	11.04.16	S.G.	DRAFT							
No.	Date	By	Amendment	Checked				Scale: AS SHOWN	Date: MAR 2016	A B C D E F



THIS DESIGN AND DRAWING IS COPYRIGHT. NO PART OF THIS DRAWING MAY BE REPRODUCED, STORED IN A RETRIEVAL SYSTEM OR TRANSMITTED IN ANY FORM WITHOUT THE WRITTEN PERMISSION OF LAMBERT & REHBEIN PTY LTD.				<div><div><div><div><div><div></div><div></div></div><div><div></div><div></div></div></div><div><div><div></div><div></div></div><div><div></div><div></div></div></div><div><div><div></div><div></div></div><div><div></div><div></div></div></div><div><div><div></div><div></div></div><div><div></div><div></div></div></div></div><div>LAMBERT & REHBEIN</div><div>ENGINEERS • MANAGERS • SCIENTISTS</div></div><div><div><div><div>CBD HOUSE</div><div>LEVEL 3, 120 WICKHAM STREET</div><div>FORTITUDE VALLEY QLD 4006</div><div>P.O. BOX 12 FORTITUDE VALLEY QLD 4006</div><div>A.C.N. 010 451 902</div></div><div><div>TELEPHONE (07) 3250 9000</div><div>FACSIMILE (07) 3250 9001</div><div>EMAIL mail@lar.net.au</div></div></div><div><div></div><div></div></div></div><div><div>Project: PROPOSED BICYCLE ROUTE CONCEPT DESIGN MARRICKVILLE</div><div>Title: STUDY AREA 2 (LR3) LAYOUT PLAN SHEET 7 OF 9</div></div><div><div>Client: MARRICKVILLE COUNCIL</div><div><div><div>Draftsperson: SG</div><div>Checked: DL</div><div>Sheet Size</div><div>Drawing No.</div></div><div><div>Designer: SG</div><div>Approved: A. PEZZUTTI 6362</div><div>RPEQ No:</div><div>A1 B16049-C207</div></div><div><div>Scale: AS SHOWN</div><div>Date: MAR 2016</div><div><div>A</div><div>B</div><div>C</div><div>D</div><div>E</div><div>F</div></div></div></div></div></div> <tr><td>F</td><td>03.11.16</td><td>S.G.</td><td>REVISED FINAL CONCEPT ISSUE</td><td></td><td></td></tr> <tr><td>E</td><td>17.10.16</td><td>S.G.</td><td>FINAL CONCEPT ISSUE</td><td></td><td></td></tr> <tr><td>D</td><td>03.05.2016</td><td>S.G.</td><td>SYDNEY BUSES AMENDMENT</td><td></td><td></td></tr> <tr><td>C</td><td>27.04.16</td><td>S.G.</td><td>CONCEPT ISSUE</td><td></td><td></td></tr> <tr><td>B</td><td>20.04.16</td><td>AST</td><td>REVISED DRAFT</td><td></td><td></td></tr> <tr><td>A</td><td>11.04.16</td><td>S.G.</td><td>DRAFT</td><td></td><td></td></tr> <tr><td>No.</td><td>Date</td><td>By</td><td>Amendment</td><td></td><td>Checked</td></tr>		F	03.11.16	S.G.	REVISED FINAL CONCEPT ISSUE			E	17.10.16	S.G.	FINAL CONCEPT ISSUE			D	03.05.2016	S.G.	SYDNEY BUSES AMENDMENT			C	27.04.16	S.G.	CONCEPT ISSUE			B	20.04.16	AST	REVISED DRAFT			A	11.04.16	S.G.	DRAFT			No.	Date	By	Amendment		Checked
F	03.11.16	S.G.	REVISED FINAL CONCEPT ISSUE																																												
E	17.10.16	S.G.	FINAL CONCEPT ISSUE																																												
D	03.05.2016	S.G.	SYDNEY BUSES AMENDMENT																																												
C	27.04.16	S.G.	CONCEPT ISSUE																																												
B	20.04.16	AST	REVISED DRAFT																																												
A	11.04.16	S.G.	DRAFT																																												
No.	Date	By	Amendment		Checked																																										



LEGEND:-

- EXISTING LINE MARKING
- PROPOSED LINE MARKING
- PROPOSED LINE MARKING - ALTERNATE OPTION
- EXISTING SIGNAGE
- EXISTING SIGNAGE - TO BE REMOVED
- PROPOSED SIGNAGE
- PAINTED BIKELANE
- APPROXIMATE LOCATION OF EXISTING TREES
- APPROXIMATE LOCATION OF EXISTING STORMWATER PIT
- KERB BUILD OUT
- SHARED ENVIRONMENT INTERSECTION TREATMENT
- PARKING LANE

F	03.11.16	S.G.	REVISED FINAL CONCEPT ISSUE	
E	17.10.16	S.G.	FINAL CONCEPT ISSUE	
D	03.05.2016	S.G.	SYDNEY BUSES AMENDMENT	
C	27.04.16	S.G.	CONCEPT ISSUE	
B	20.04.16	AST	REVISED DRAFT	
A	11.04.16	S.G.	DRAFT	
No.	Date	By	Amendment	Checked

LAMBERT & REHBEIN
ENGINEERS • MANAGERS • SCIENTISTS

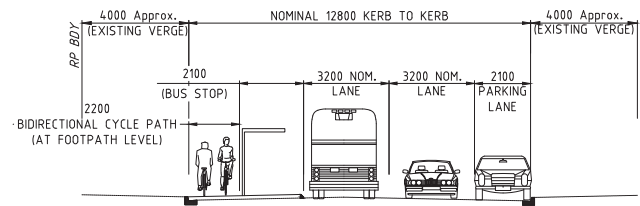
CBD HOUSE
LEVEL 3, 120 WICKHAM STREET
FORTITUDE VALLEY QLD 4006
P.O. BOX 12 FORTITUDE VALLEY QLD 4006
A.C.N. 010 451 902

TELEPHONE (07) 3250 9000
FACSIMILE (07) 3250 9001
EMAIL mail@lar.net.au

Project: PROPOSED BICYCLE ROUTE
CONCEPT DESIGN
MARRICKVILLE

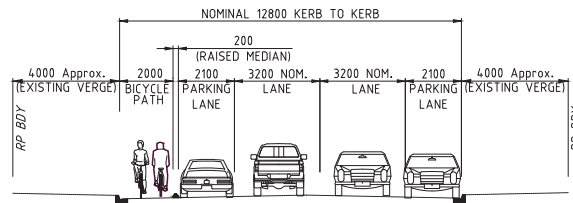
Title: STUDY AREA 2 (LR3) LAYOUT
PLAN SHEET 9 OF 9

Client: MARRICKVILLE COUNCIL		Sheet Size	Drawing No.
Draftsperson: SG	Checked: DL	A1	B16049-C209
Designer: SG	Approved: RPEQ No: 6362	A	B
Scale: AS SHOWN	Date: MAR 2016	C	D
		E	F



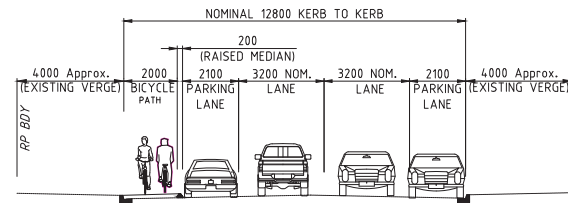
SECTION B
1:100
C201

TYPICAL SECTION - LIVINGSTONE RD @ BUS STOP



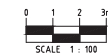
SECTION A
1:100
C203

TYPICAL SECTION - LIVINGSTONE RD -
(CYCLE PATH ON ROAD)



SECTION A
1:100
C203

TYPICAL SECTION - LIVINGSTONE RD -
(CYCLE PATH ON KERB BUILD OUT)



<small>THIS DESIGN AND DRAWING IS COPYRIGHT. NO PART OF THIS DRAWING MAY BE REPRODUCED, STORED IN A RETRIEVAL SYSTEM OR TRANSMITTED IN ANY FORM WITHOUT THE WRITTEN PERMISSION OF LAMBERT AND REHBEIN PTY LTD</small>	F	03.11.16	S.G.	REVISED FINAL CONCEPT ISSUE	
	E	17.10.16	S.G.	FINAL CONCEPT ISSUE	
	D	03.05.2016	S.G.	SYDNEY BUSES AMENDMENT	
	C	27.04.16	S.G.	CONCEPT ISSUE	
	B	20.04.16	AST	REVISED DRAFT	
	A	11.04.16	S.G.	DRAFT	
	No.	Date	By	Amendment	Checked
<div> <div> LAMBERT & REHBEIN ENGINEERS • MANAGERS • SCIENTISTS <small>CBD HOUSE LEVEL 3, 120 WICKHAM STREET FORTITUDE VALLEY QLD 4006 P.O. BOX 12 FORTITUDE VALLEY QLD 4006 A.C.N. 010 451 902</small> </div> <div> <small>TELEPHONE (07) 3250 9000 FACSIMILE (07) 3250 9001 EMAIL mail@lar.net.au</small> </div> </div>					
<div> <div> Project: PROPOSED BICYCLE ROUTE CONCEPT DESIGN MARRICKVILLE </div> <div> Title: TYPICAL SECTIONS SHEET </div> </div>					
<div> <div> Client: MARRICKVILLE COUNCIL </div> <div> <div> Draftsperson: SG </div> <div> Designer: SG </div> <div> Scale: AS SHOWN </div> </div> <div> <div> Checked: DL </div> <div> Approved: A.PEZZUTTI RPEQ No: 6362 </div> <div> Date: MAR 2016 </div> </div> <div> <div> Sheet Size: A1 </div> <div> Drawing No.: B16049-C210 </div> </div> </div>					
<div> <div> A </div> <div> B </div> <div> C </div> <div> D </div> <div> E </div> <div> F </div> </div>					