

Peace Reserve

- Short term enhancement project

Refined Concept

June 2023

for



Note: The following compilation of the concept design material has been compiled in the format of a presentation, not as a design report.

The brief objectives:

- **Encourage increased use and activity** within the space across the day and week, throughout the year ie. all seasons
- **Increase colour and light** within the space
- Potential to **under prune existing tree canopy** (as a maintenance activity) to enhance sight lines and security
- **Longer term potential to thin existing canopy cover** (eg. reduce number of trees - the Brown Pines, *Podocarpus elatus* grove to Alice Street and Golden Ash, *Fraxinus excelsior* trees) to enhance visibility and natural light penetration
- **Potential for a diverse range of seating** from seating decks, to recycling of existing fixed seats to moveable furniture that encourages use to key areas of the space and enhances the character of the space
- **Potential for a commissioned mural** to the commercial building edge and potentially beyond that could add colour and interest to the park edge
- **Potential for strong garden character** at the west (lane) end of the space under Golden Ash, *Fraxinus* canopy
- **Provide enhanced identity** including signage if appropriate to park frontage
- **Potential for short term activation** (eg table tennis table)

Coordination with Public Domain master plan

Public Domain Analysis - Spaces + Opportunities - PEACE RESERVE

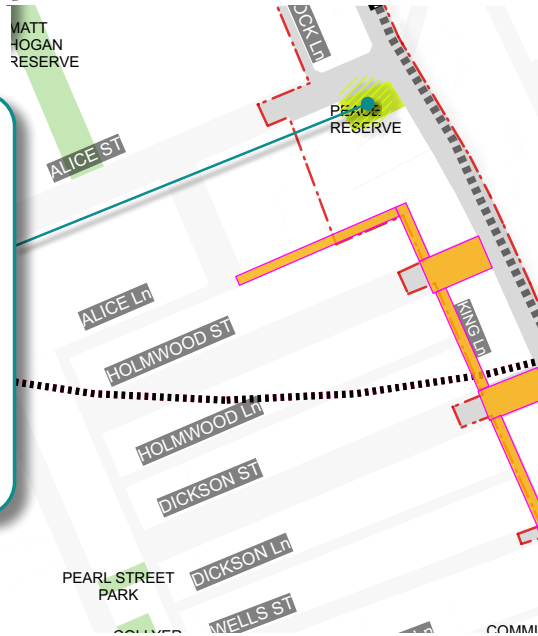
PUBLIC SPACE: PEACE RESERVE

OVERALL M²: 581 m²
Surrounding footpath: 125 m²
Soft landscape: 291 m²
Hard Landscape: 290 m²
+ surrounding footpath

Canopy cover %: 88%
Awnings%: 4% of combined spaces (pergola)

Activation: Gathering/ walk through area
Amenity: Backed seating (3), uplighters to trees

Key features(if any):
- Peace pergola over verge with integrated painted tiles
- Feature pavement pattern artwork
- Tree canopies dominant space
- few seats



CHALLENGES

1. Avenue trees to Alice St are tightly spaced - stunting growth, limiting function and visibility through the space
2. Previously grassed area is bare and overshadowed by existing trees
3. Limited seating within paved area (1 bench)
4. Varied / isolated fence / boundary treatment to adjoining properties
5. Inactive facade to adjoining building

OPPORTUNITIES

6. Rationalise existing trees to maintain summer shade but open up winter solar access and visibility
7. Diversify seating and gathering opportunities across park
8. Conserve frontage pergola and integrate with upgraded park
9. Consider and rationalise extent of pavement and grass - consider integration of some decking / landings and or gravel
10. Enhance character of boundary zones
11. Enhance night lighting
12. Provide drinking fountain
13. Pursue more active / contributive built facade adjoining park



Views into Peace Reserve



Views into Peace Reserve - from Alice Street



Views into Peace Reserve - from King Street

ep

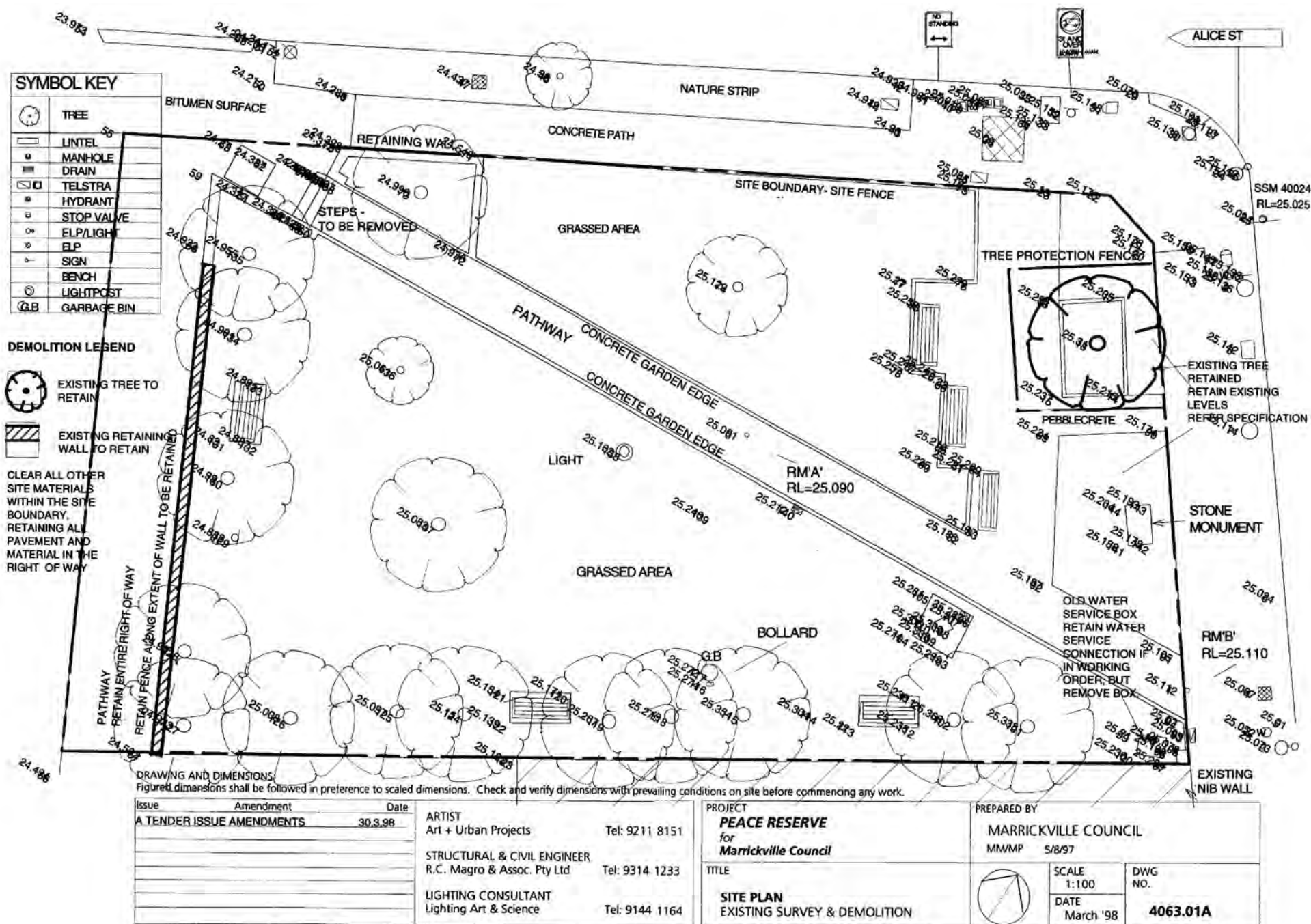


King Street

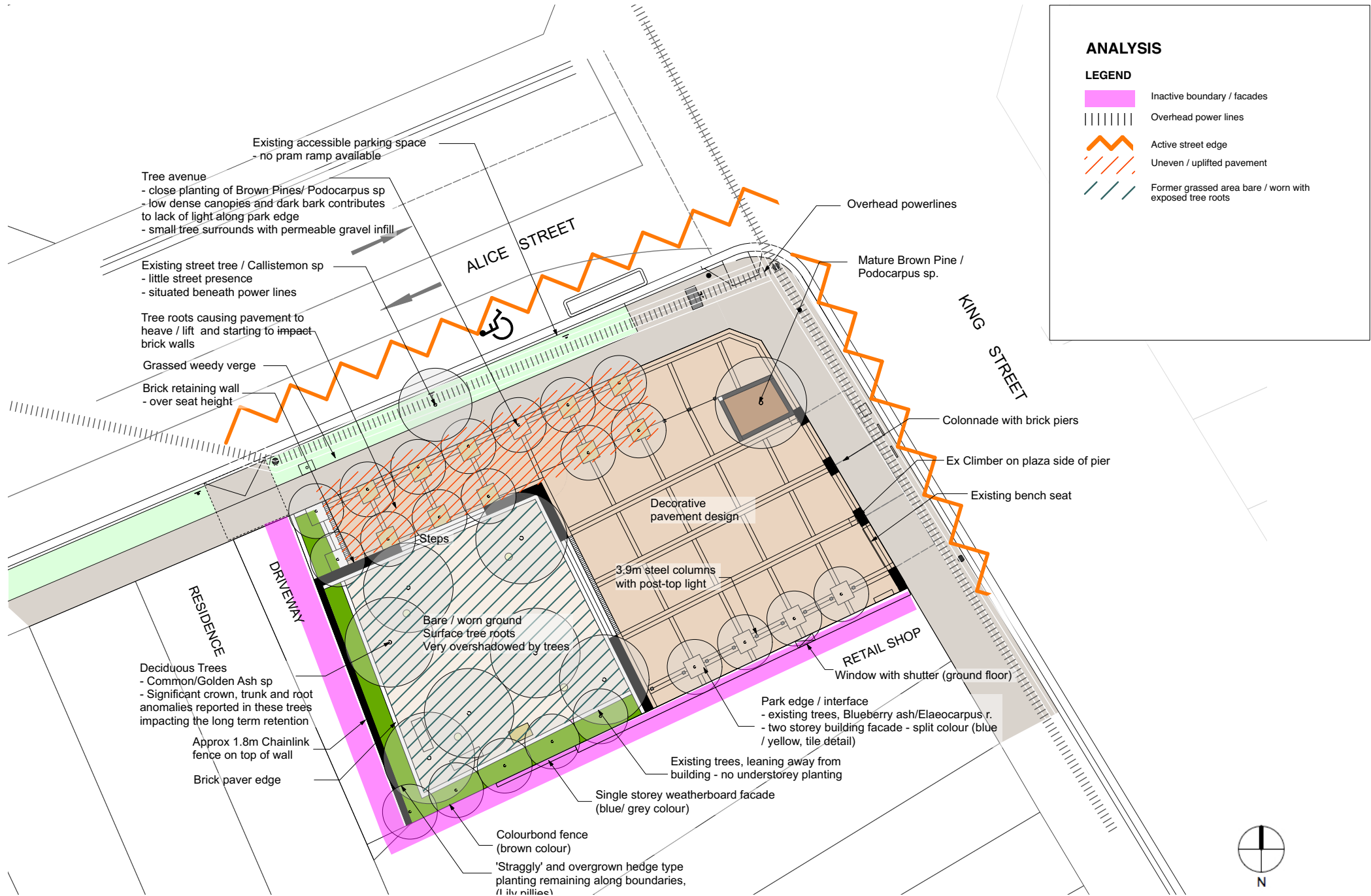
Completion photos from 1998-2000 scheme

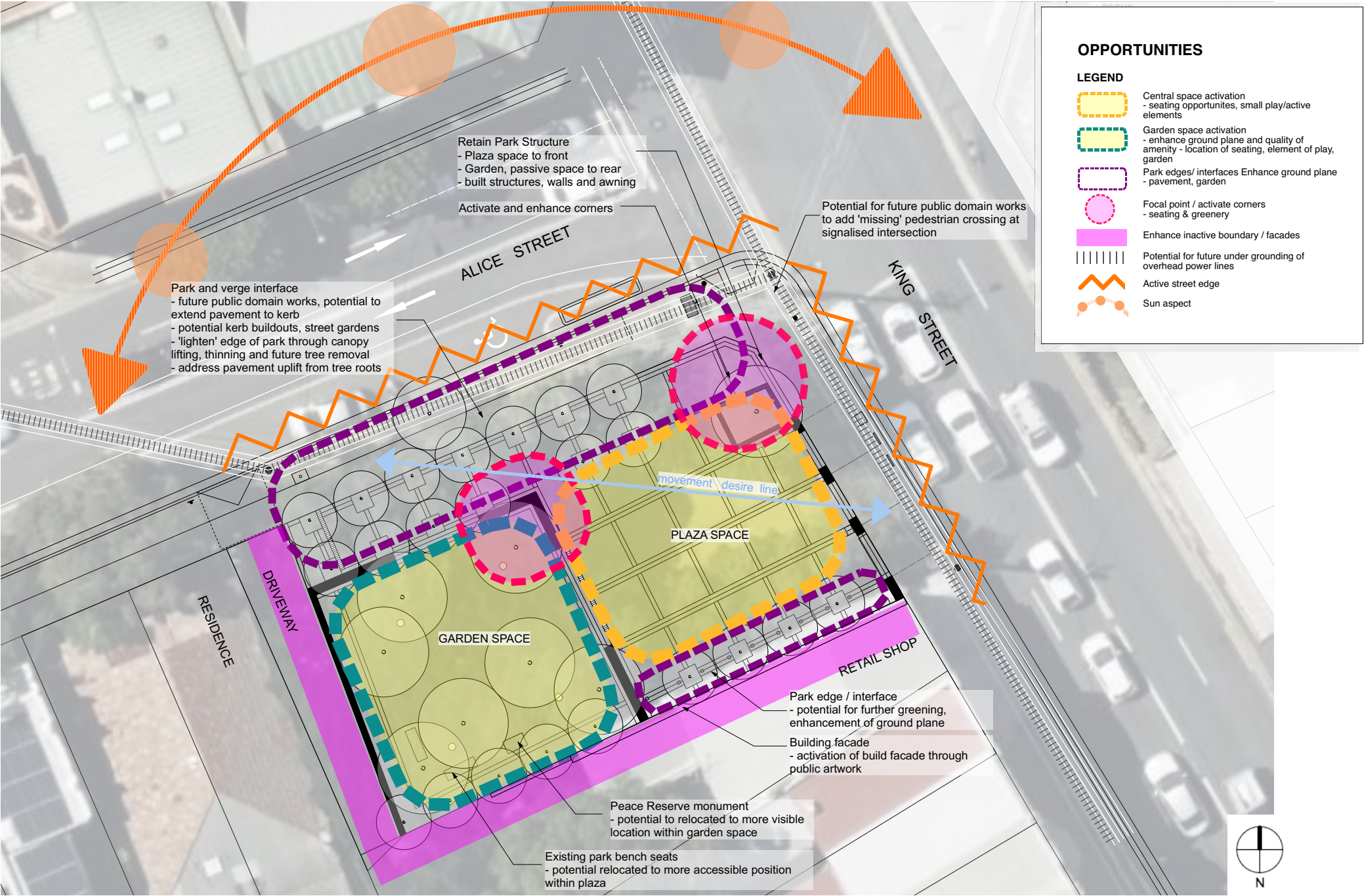


Peace Reserve layout prior to 1998-2000 scheme

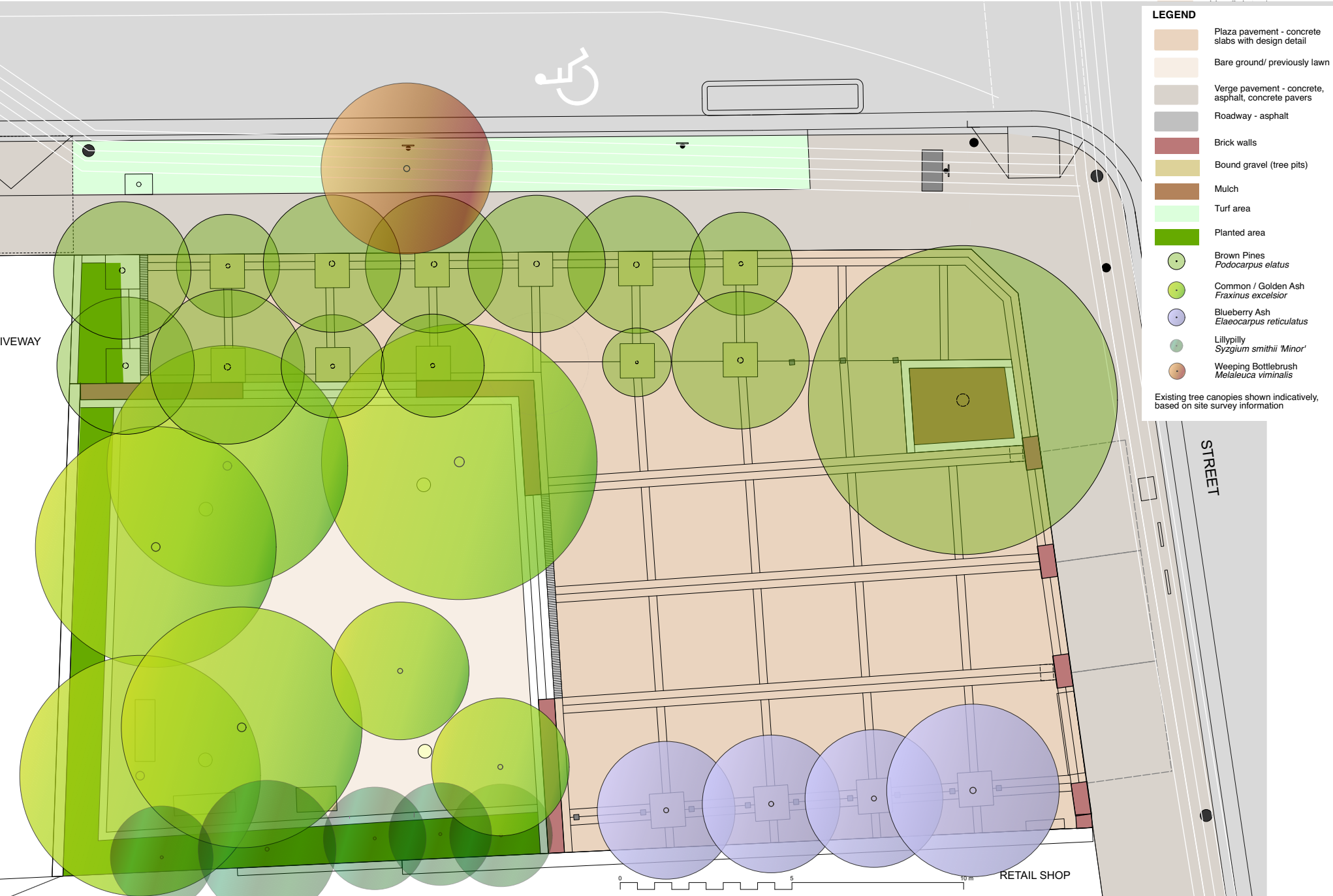


Existing Site Plan / Site Analysis





Existing Site Plan and tree canopy



REFINED CONCEPT - SHORT TERM

ALICE STREET

LEGEND

- Existing Plaza pavement - decorative concrete slabs with brick paver banding
- Existing verge pavement - pavers / concrete
- Roadway - asphalt
- Existing brick walls
- Crushed gravel with steppers
- Indicative area of temporary 'make good' of damaged pavement
- Existing turf verge
- New garden planting area
- Existing planting area to be refurbished
- Existing tree - canopy shown indicatively, based upon survey information
- Proposed tree to be removed - subject to Approvals
- Proposed furniture locations - seats, tables, relocated benches
- Proposed seating platform / timber decks
- Proposed small play/ sculptural seat element - to be confirmed
- Extent of proposed works

* Feature Lighting - refurbished and or new lighting not shown on plan

RESIDENCE

DRIVEWAY

EXISTING BOUNDARY PLANTINGS, WHERE NOT IMPACTING WALL, TO BE PRUNED TO REFORM HEDGE, MAX HEIGHT ~ 1M

PROPOSED GARDEN SEATING - Integrate / relocation of existing benches (2/3)

GARDEN SPACE

EXISTING MONUMENT TO REMAIN IN PLACE

POTENTIAL TO REPAINT COLOURBOND FENCE

PROPOSED SEAT / PLATFORM DECK

CROWN LIFTING, PRUNING AND OF ALL TREES - AS RECOMMENDED BY ARBORIST

PROPOSED REFURBISHMENT OF GARDEN SPACE
- SEATING AND INFORMAL PATHWAYS
- NEW SHADE TOLERANT LOW UNDERSTOREY PLANTING
- POTENTIAL FOR SMALL SCULPTURAL SEAT/ PLAY ELEMENT

PLAZA SPACE

PROPOSED NEW PLANTED AREA

POTENTIAL WATER REFILL STATION LOCATION TO BE CONFIRMED

PROPOSED LONG BENCH WITH ADJACENT TABLES AND SEATS

EXISTING SEAT TO BE RELOCATED

RETAIL SHOP

PROPOSED ART MURAL TO BUILDING FACADE

DRAWING NOTES:
1. Do not scale off drawings.
2. Verify all dimensions on site.
3. Existing layout is based upon aerial and previous design drawings from 1998 'Hard Landscape Plan' (pdf)



REFINED CONCEPT - LONG TERM

ALICE STREET

LEGEND

- Existing Plaza pavement - decorative concrete slabs with brick paver banding
 - Verge pavement - pavers (to Public Domain Masterplan)
 - Roadway - asphalt
 - Existing brick walls
 - Crushed gravel with steppers
 - Existing turf verge
 - New garden planting area
 - Existing planting area to be refurbished
 - Existing tree - canopy shown indicatively, based upon survey information
 - Proposed tree
 - Proposed tree to be removed - subject to approvals / consultation
 - Proposed furniture locations - seats, tables, relocated benches
 - Proposed seating platform / timber decks
 - Proposed small play/ sculptural seat element - to be confirmed
 - Extent of proposed works
 - Indicative area of Plaza pavement requiring relaying
- * Feature Lighting - refurbished and or new lighting not shown on plan

RESIDENCE

DRIVEWAY

PROPOSED SELECTIVE REMOVAL OF TREES TO ALLOW UNDERSTOREY PLANTINGS TO THRIVE, ALLOW MORE NATURAL YEAR ROUND INTO SPACE AND OPEN UP VIEWS

EXISTING BOUNDARY PLANTINGS, WHERE NOT IMPACTING WALL, TO BE PRUNED TO REFORM HEDGE, MAX HEIGHT ~ 1M

PROPOSED GARDEN SEATING - Integrate / relocation of existing benches (2/3)

REPLACE EXISTING FENCE WITH PALISADE FENCE OR SIMILAR

GARDEN SPACE

EXISTING MONUMENT TO REMAIN IN PLACE

POTENTIAL TO REPAINT COLOURBOND FENCE

PROPOSED ART MURAL TO BUILDING FACADE

0 5 10 m

PROPOSED SEAT / PLATFORM DECK

POTENTIAL SELECTIVE TREE REMOVAL - SUBJECT TO CONSULTATION AND APPROVALS

PROPOSED SEATING / PLATFORM DECKS

PROPOSED REFURBISHMENT OF GARDEN SPACE
- SEATING AND INFORMAL PATHWAYS
- NEW SHADE TOLERANT LOW UNDERSTOREY PLANTING
- POTENTIAL FOR SMALL SCULPTURAL SEAT/ PLAY ELEMENT

PROPOSED NEW GARDEN PLANTED AREAS
POTENTIAL WATER REFILL STATION LOCATION TO BE CONFIRMED

POTENTIAL OUTDOOR PING PONG TABLE LOCATED WITHIN PLAZA

PLAZA SPACE

PROPOSED LONG BENCH WITH ADJACENT TABLES AND SEATS

EXISTING SEAT TO BE RELOCATED

RETAIL SHOP

KING STREET

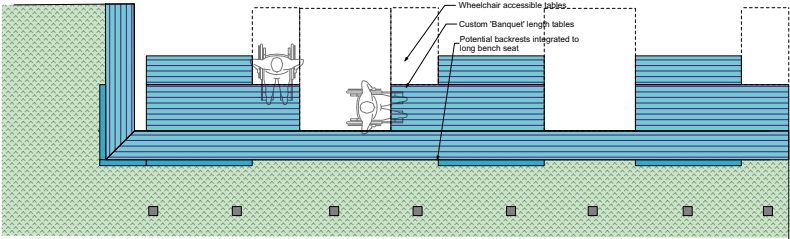
DRAWING NOTES:
1. Do not scale off drawings.
2. Verify all dimensions on site.
3. Existing layout is based upon aerial and previous design drawings from 1998 'Hard Landscape Plan' (pdf)



REFINED CONCEPT - FURNITURE OPTIONS FOR SOUTH SIDE OF PLAZA SPACE

- OPTION 1**
- Long Seat coloured Aluminium battens, Powder frame (standard base colour) - Batten options A) multicolour B) single colour C) woodgrain lookalike
 - Tables
 - bench seats

Potential Products: Mos Urban, Sturt/verge range (Public Domain Guide Reference) or Draffin, Kiama range
Standard dimensions or Extended versions for 'banquet' length tables



Product / material images



Aluminium battens - woodgrain



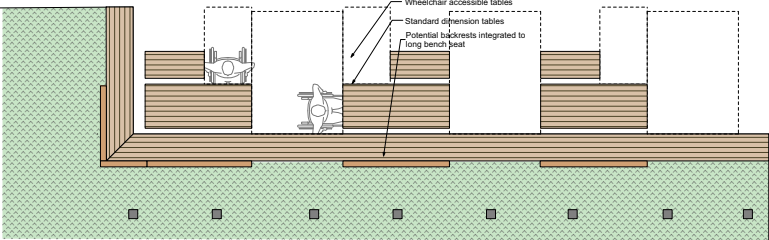
Hardwood battens



Aluminium battens - multi-colour or single

- OPTION 2**
- Long Seat timber battens with coloured powdercoated steel frame elements - A) chunky timber on end or B) batons/slates
 - Tables
 - bench seats

Potential Products: Mos Urban - Sturt/verge range (Public Domain Guide Reference) Draffin Knox range
Standard dimensions or Extended versions for 'banquet' length tables



Hardwood Timber battens (battens on end)

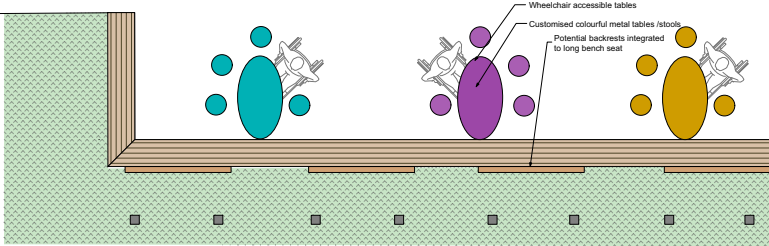


Powdercoat metal frames - with Dulux Colour Range



- OPTION 3**
- Long Seat with timber battens with powdercoated steel frame elements
 - Tables - Custom shaped flat steel or perforated metal tables
 - Stools - flat steel or perforated metal

Potential Products: Mos Urban - Sturt/verge range (Public Domain Guide Reference)
Draffin Kiama range, Draffin Spectrum steel range customised



Powdercoated flat steel or perforated steel - table shapes can be customised



Long bench - timber battens, powdercoated frame

FOR INFORMATION ONLY

Concept Options - new seating opportunities

- seating platform decks



- Long bench seat with adjacent tables and seating



Concept Options - refurbishment of 'garden space'

- understorey planting to include a mixture of foliage textures and colour, informal pathway network



- **Preliminary Concept Sketch Layout Options and concept development**
- **Options for proposed elements**

Potential Long term layout

Concept layout option 1



- Seating decks to focal points
- Greening / refurbishment of 'Garden' space, potential for small play elements
- Flexible use of central plaza with gathering / seating at edges
- Potential long seat with tables to edge of plaza and new planting bed
- Thinning of Podocarpus to 1 row & double spaced, with enlarged and planted tree pits - stronger diagonal links
- Verge upgrade, potential kerb buildout for street tree
- Pram ramp for accessible space
- Water bubbler
- Public art mural to building facade & integrate improved edge treatment to boundary
- Upgrade boundary fence (west)

Potential Long term layout

Concept layout option 2



- Seating decks to focal points
- Greening / refurbishment of 'Garden' space
- Flexible use of central plaza with seating at edges
- Relocated park bench seats to edge of plaza and garden
- Potential to use steel columns for trellis system within new garden bed
- Thinning of Podocarpus to 1 row & double spaced, with enlarged and planted tree pits - stronger diagonal links
- Potential corner buildout subject to vehicle swept paths
- Verge upgrade, potential kerb buildouts for street garden and tree planting
- Water bubbler
- Public art mural to building facade & integrate improved edge treatment to boundary
- Upgrade boundary fence (west)

Potential Long term layout

Concept layout option 3



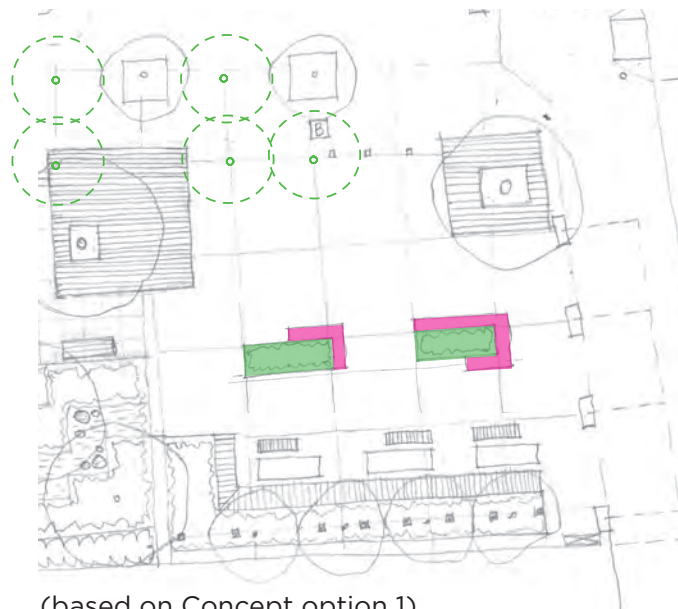
- Informal seating arrangement to focal points
- Greening / refurbishment of 'Garden' space, potential for small play elements
- Flexible use of central plaza with seating at edges
- Relocated park bench seats to edge of plaza and gardens
- Thinning of Podocarpus to double spacing in 2 rows - stronger diagonal links
- Potential corner buildout subject to vehicle swept paths
- Verge upgrade, potential kerb buildouts for street garden and tree planting
- Water bubbler
- Public art mural to building facade & integrate improved edge treatment to boundary
- Upgrade boundary fence (west)

Concept Options - Plaza Space Activation

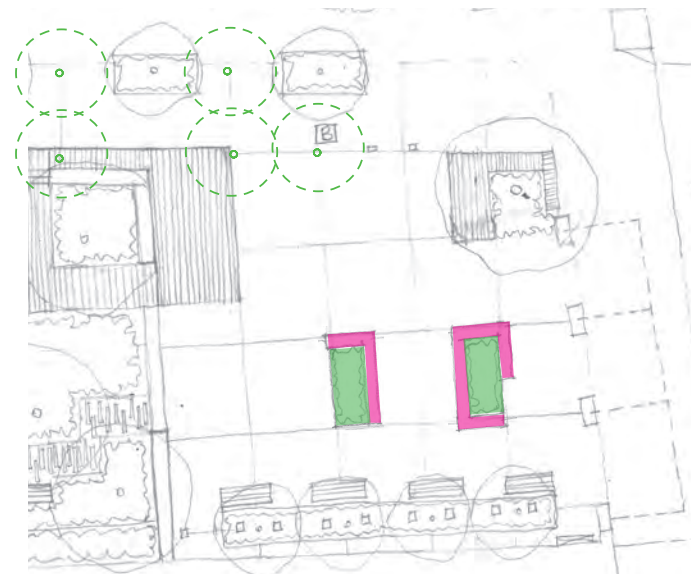
- Modular seating/planters



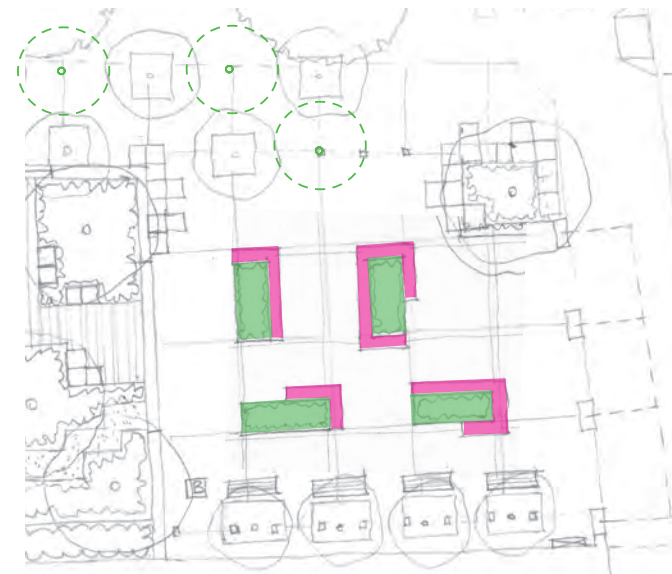
(based on Concept option 1)



(based on Concept option 1)



(based on Concept option 2)



(based on Concept option 3)

Concept Options - Plaza Space Activation

- with modular seating/planters - Cube clusters



(based on Concept option 1)



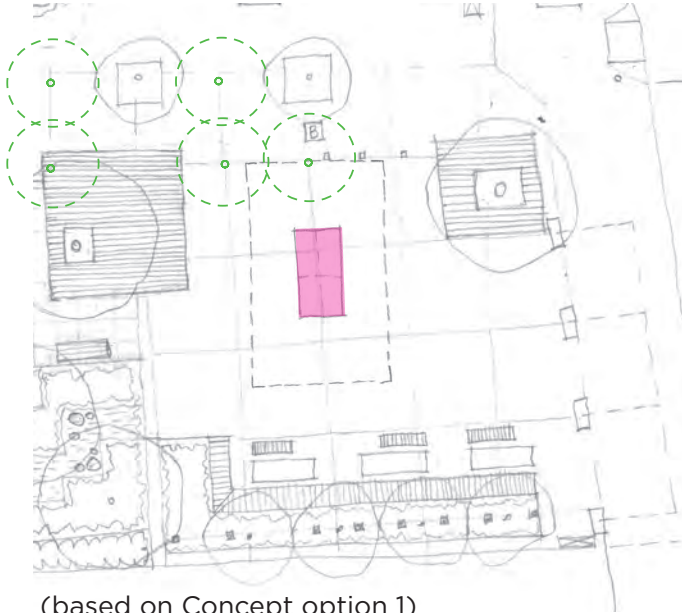
(based on Concept option 2)



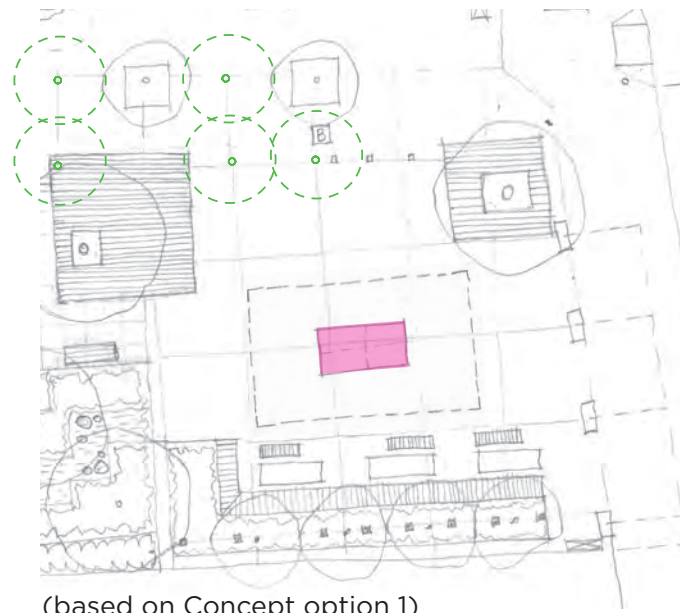
(based on Concept option 3)

Concept Options - Plaza Space Activation

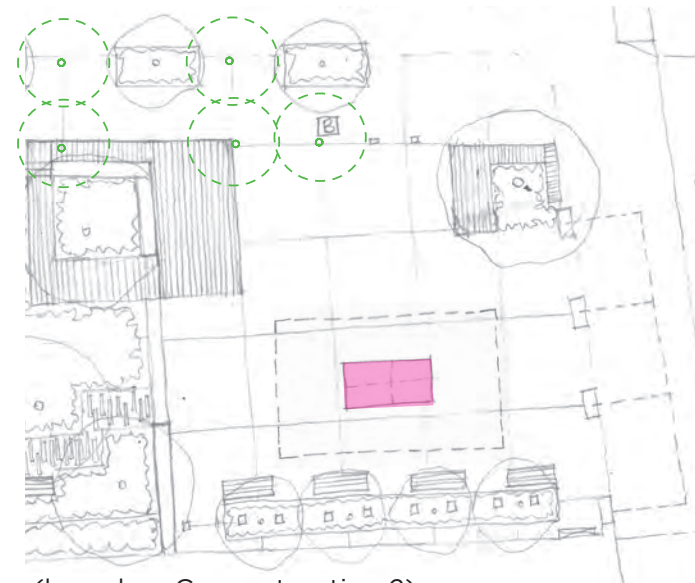
- Table Tennis table



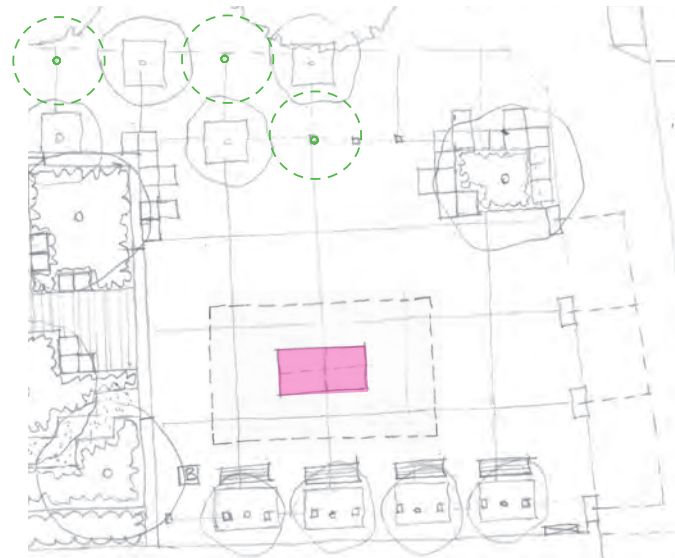
(based on Concept option 1)



(based on Concept option 1)



(based on Concept option 2)



(based on Concept option 3)

- Water bubbler (if feasible)



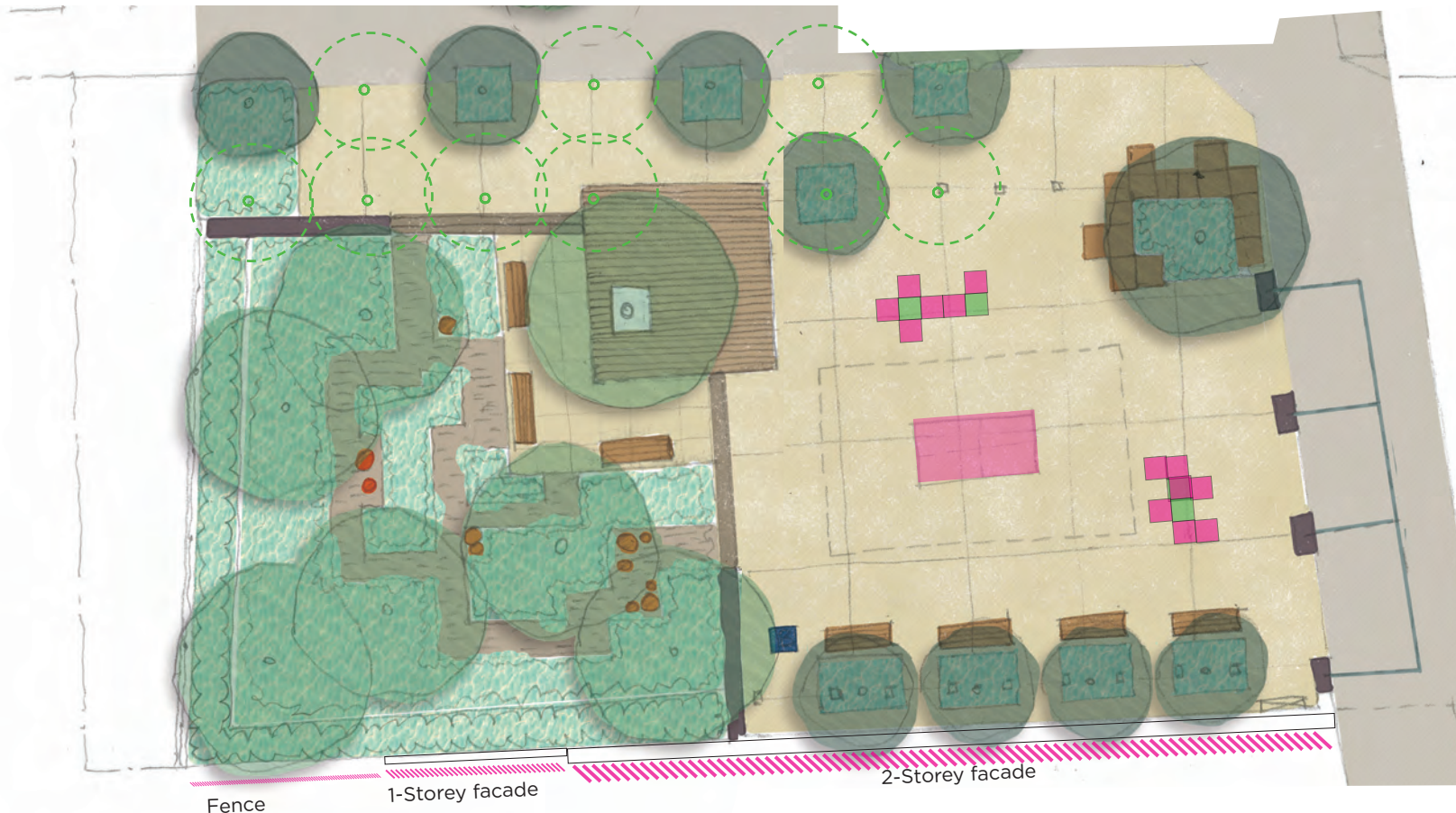
1-Storey facade

2-Storey facade



Potential Short term layout (b)

- Reduce podocarpus numbers adjoining street (if feasible in time period)
- Seating deck situated over corner of 'garden' space
- Refurbished garden with potential seating around large Podocarpus
- Freestanding modular seating/planters
- Greening / garden refurbishment
- Table tennis table
- Public art mural to building facade



Building Facade - opportunities

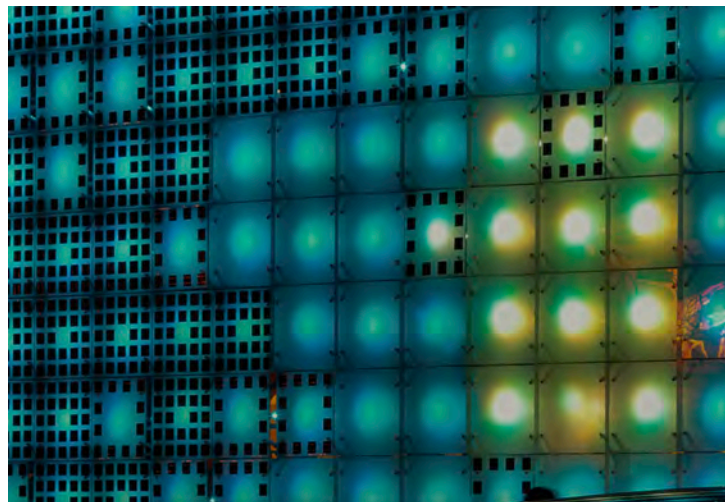
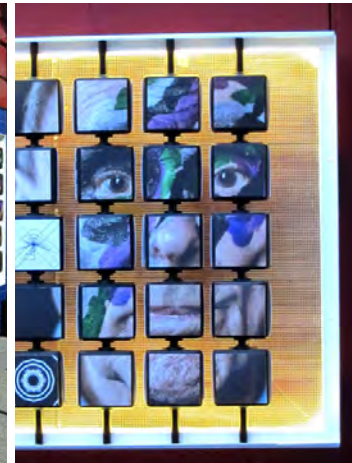
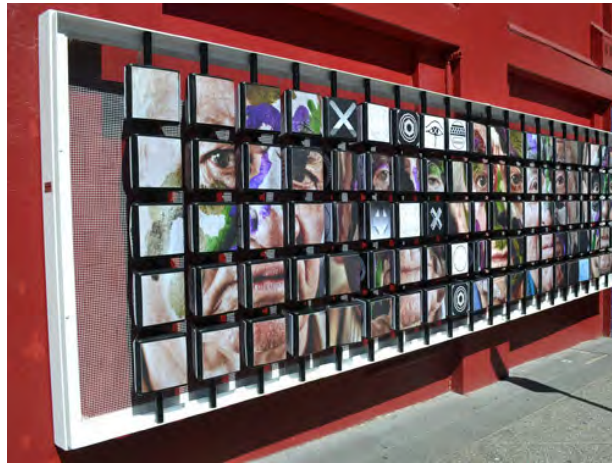
Commissioned public artwork which can potentially utilise and integrate:

- the wall facade with windows etc
- existing 3.9m steel columns with post top lighting
- existing tree planting

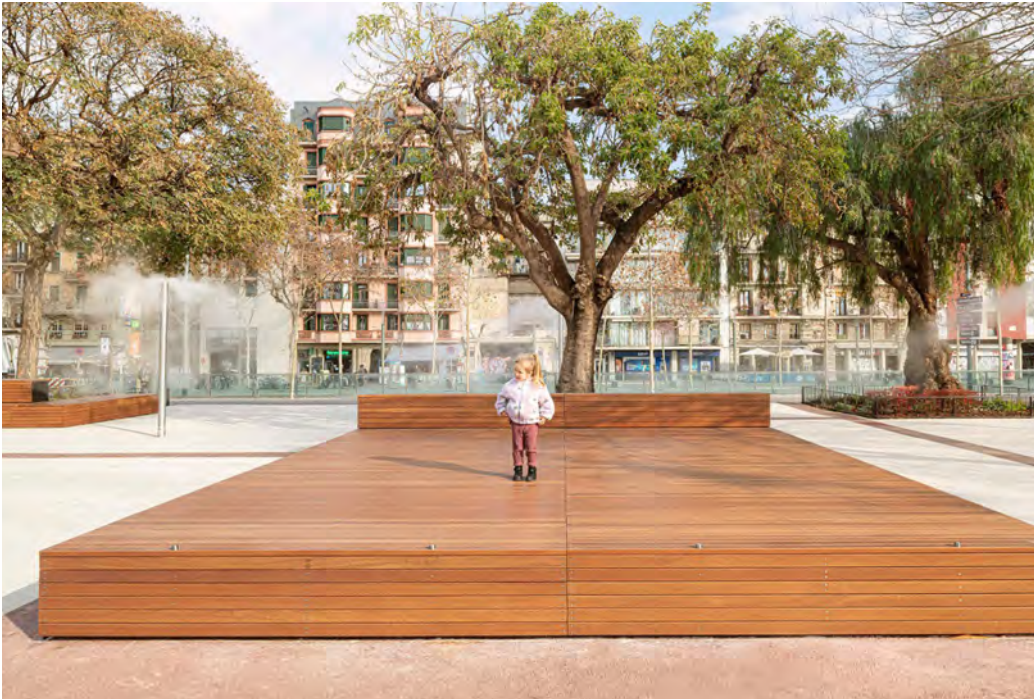


Potential Options:

1. **Wall mural** to building facade and potentially extend to park boundary
2. **Green wall** to building facade , panels or trellis system
3. **Interactive/dynamic artwork** that can contribute to activation of space, an **element of play**, relate to **local community** ie. 'Noughts + Crosses' moveable panels, colour
4. **Interactive / dynamic artwork** that can contribute to activation of space through **lighting** ie, solar light wall panel



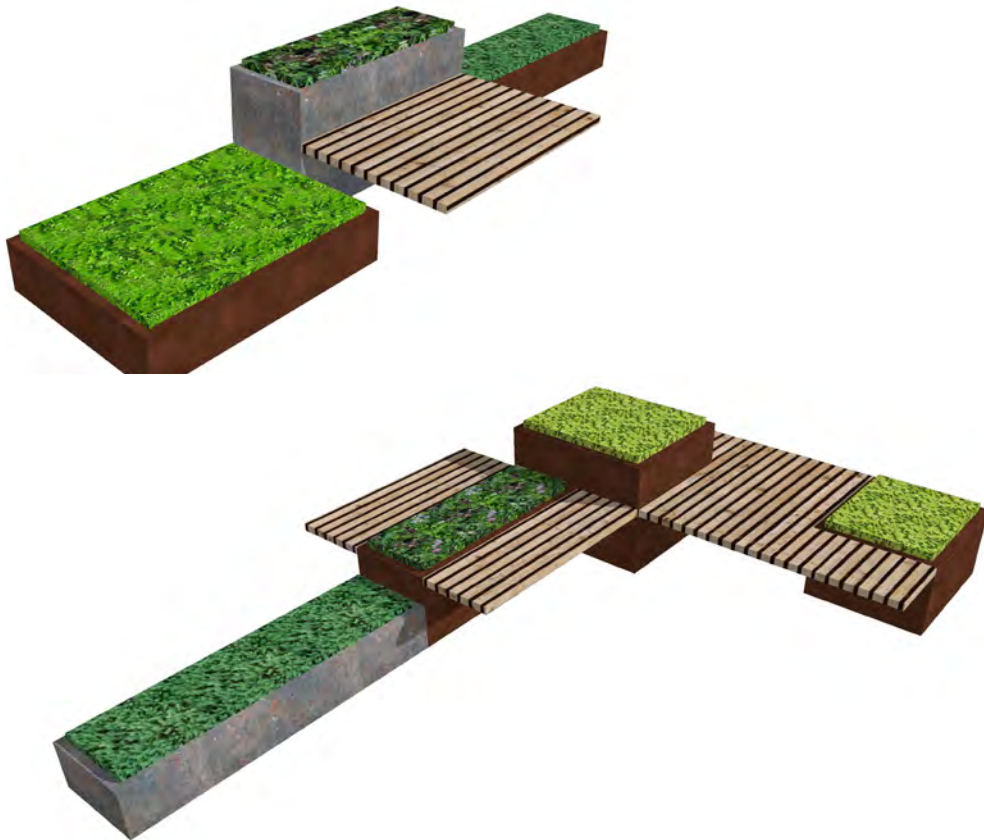
Concept Options - customised decking seating platform



Concept Options - Modular components (Reusable + moveable)

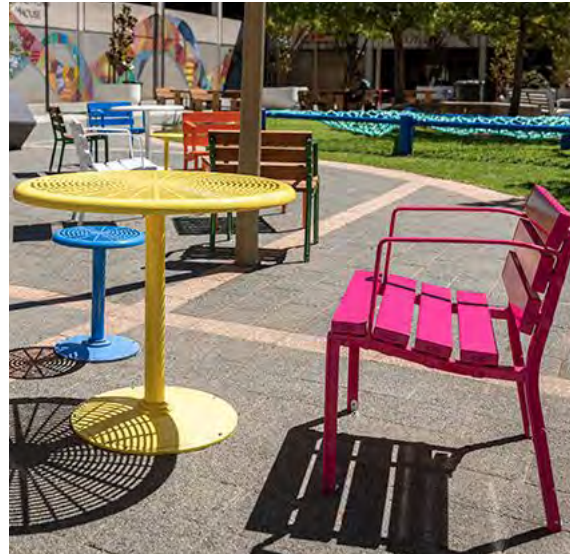


Concept Options - Modular components (Reusable + moveable)



Concept Options - Free standing furniture components (Reusable)

- opportunities to add colour to space





Colourful multi-purpose table tops + stools



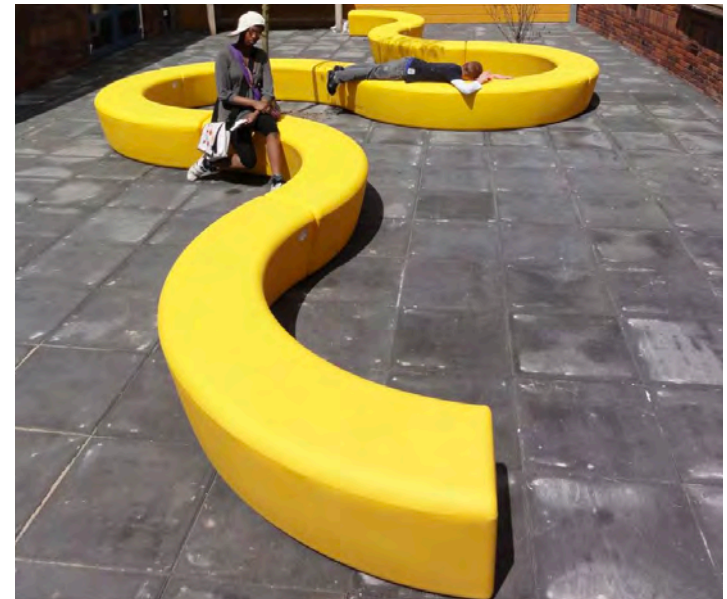
Table tennis table with customised artwork

Concept Options - furniture

- bench seats with tables

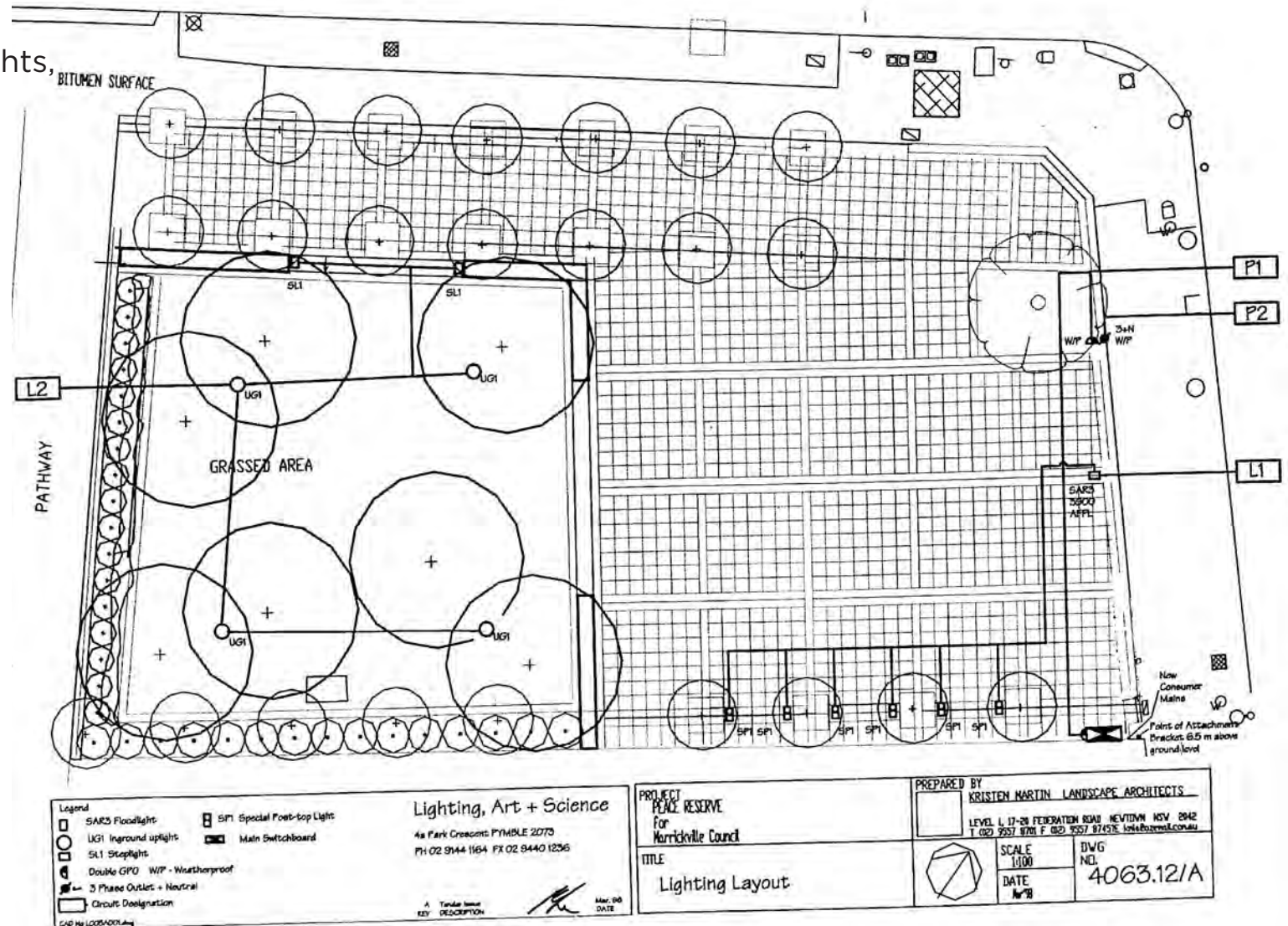


Concept Options - Overlay of Colourful Curvilinear forms



Electrical & Lighting

- Site investigations are to be undertaken to determine the working status of the existing electrical and lighting infrastructure
 - existing inground uplights in 'lawn' area,
 - step wall lights,
 - steel column post-top lights,
 - floodlight to plaza
 - 3 phase outlet



Electrical & Lighting

Potential additional feature lighting elements:

- bud lighting to mature Podocarpus
- underseat/under deck lighting to new furniture installations
- Projectors/spotlights with dynamic light display

