

Uncertainty around WestConnex delays park upgrade

The NSW Roads and Maritime Service (RMS) has announced that it will compulsorily lease approximately one third of Camdenville Park for the construction of WestConnex. RMS will take over the area planned for a BMX pump track to use as a construction compound, enlarge the detention basin, and permanently take a small section of the park to straighten Bedwin Road.



Council is negotiating with RMS and the company established by the State Government to build WestConnex - the Sydney Motorway Corporation (SMC) - around:

- Access to the remainder of the park so that Council's contractors can commence the planned upgrade of the sports field and new playground
- Restoring the area used by SMC and building the BMX track, paths and landscaping once WestConnex is completed in 2019.

As more information comes available about the impact of WestConnex on the park upgrade it will be posted on www.yoursaymarrickville.com.au and included it in a future newsletter.

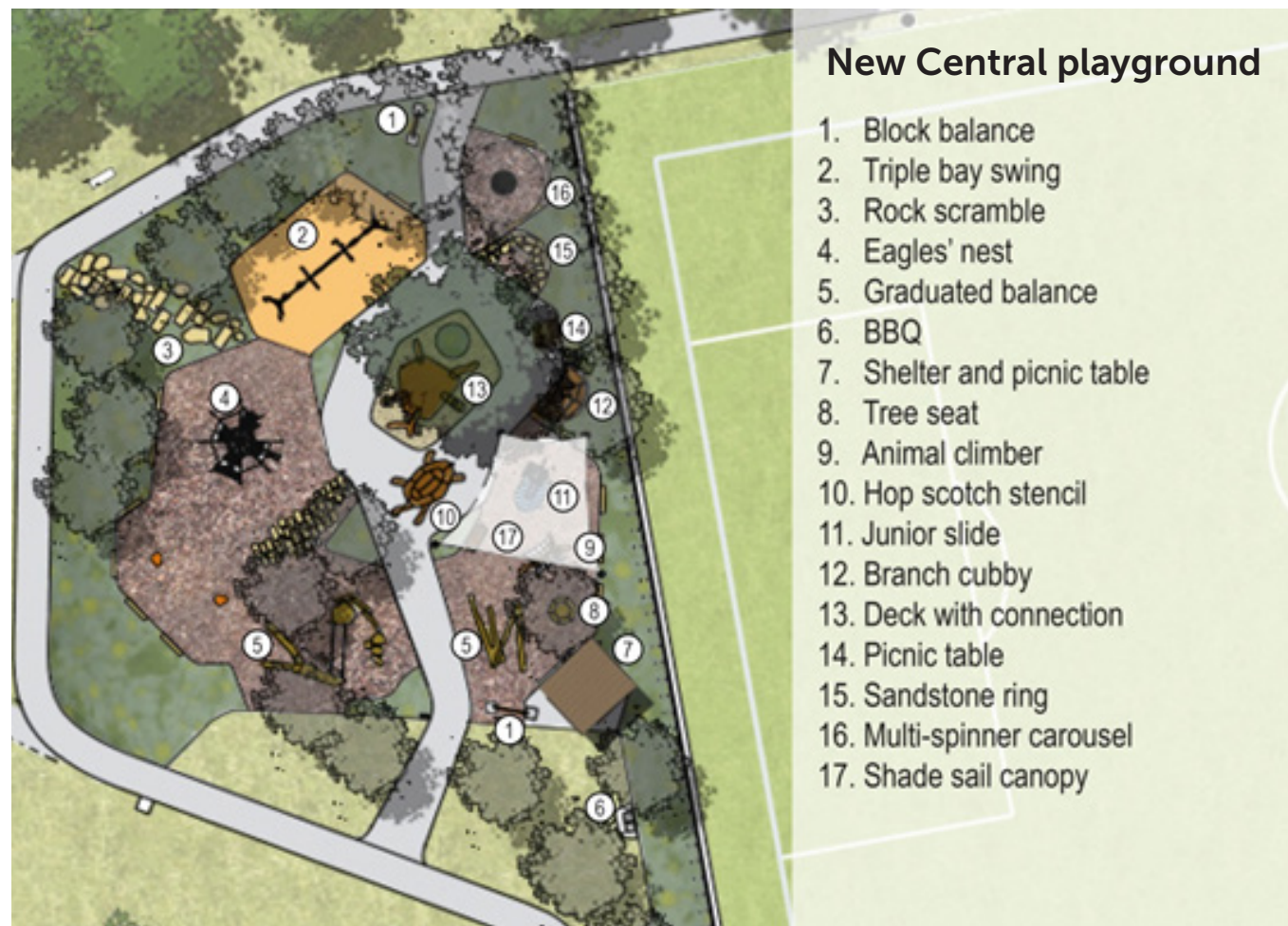
Updated design – playground and sports field

Explore the new playground design

In July 2015 community members were asked to fill in a survey with ideas for the space. The playground designers have incorporated as many of your suggestions as possible in the new design.

It includes:

- Fun and challenging equipment for kids of all ages
- Good mix of spinning, climbing, swinging and imaginative play
- Natural play elements like logs and stone blocks
- Shady places
- New trees and planting
- Safe playing spaces away from the road



Next steps in the upgrade

Subject to a satisfactory outcome from negotiations over the lease, the works planned for the area of Camdenville Park not occupied by RMS are:

- A new central playground for kids of all ages
- A new corner space for informal play
- Rain gardens to treat captured stormwater for park irrigation
- Sports field upgrade
- New paths, seating and shade
- New trees and plants
- Removal of mounds and fences for better visibility
- Remediation of site with clean soil cover and turf



Key Dates

May -June
2015

Site investigations and Newsletters 1 & 2

July to
December
2015

Designs prepared and tenders called

September
2015

Council decision to delay BMX pump track construction due to uncertainty over WestConnex

March -May
2016
WE ARE HERE

Council negotiates with Sydney Motorway Company (SMC) and Roads and Maritime Services (RMS)

Next Steps

We will provide an update once negotiations with RMS are satisfactorily complete

- Upgrade construction starts
- Park and sports field close to public
- Upgraded park reopens once work is complete
- WestConnex temporary lease concludes when motorway is built. BMX track constructed and land handed back to Council.
- Upgraded park and sports field reopens

Stay updated

Register at www.yoursaymarrickville.com for project news. Council will continue to distribute printed newsletters and place notices in the park to update on construction progress. For enquiries contact Bill Pearce, project manager, on 9392 5445.

Also in the area - Sydenham Green is getting a new skate space

The Sydenham Green Skate Space is in the final design phase after community input online and at two workshops. Check out the latest plan and follow the project online at www.yoursaymarrickville.com.au

