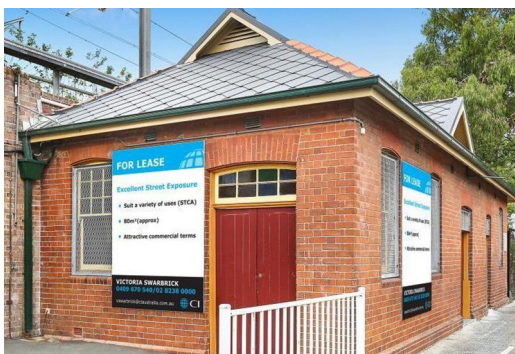


04 Upgrades and New Facilities

01 - Proposed New Facilities

175 Trafalger Street, Stanmore - image below and site map opposite.
Negotiate an agreement with the current owner (Sydney Rail) to repurpose the building into a public toilet.



A new facility is also proposed in Richard Murden Reserve (North) to support the recreational use of the recently opened multi-purpose courts.

02 - Programmed Upgrades

Under construction: Brown Street Toilets (Ashfield) - Refurbishment and part demolition of existing toilets

Outlined in the table below are the public amenities currently programmed for the next two years as of August 2019.

AMENITY	2019 / 20	2020 / 21
Camperdown Memorial	X	
Pioneer Park	X	
Brown Street (Ashfield Station)	X	
Darley Road		X
Leichhardt Park 2 & Canteen		X
Elkington Park Refurbishment		X
Kendrick Park Refurbishment		X
Mort Bay Minor Renewal	X	

03 - Upgrade Priorities

VERY HIGH

Elkington Park
Pioneers Memorial Park
Gladstone Park
Birchgrove Park- Old
Victoria Road Amenities
McNeilly Park
Simpson Park
Tempe Reserve- Alexandra Canal
Tempe Reserve- Blue Amenities
Tillman Park
Callan Park

HIGH

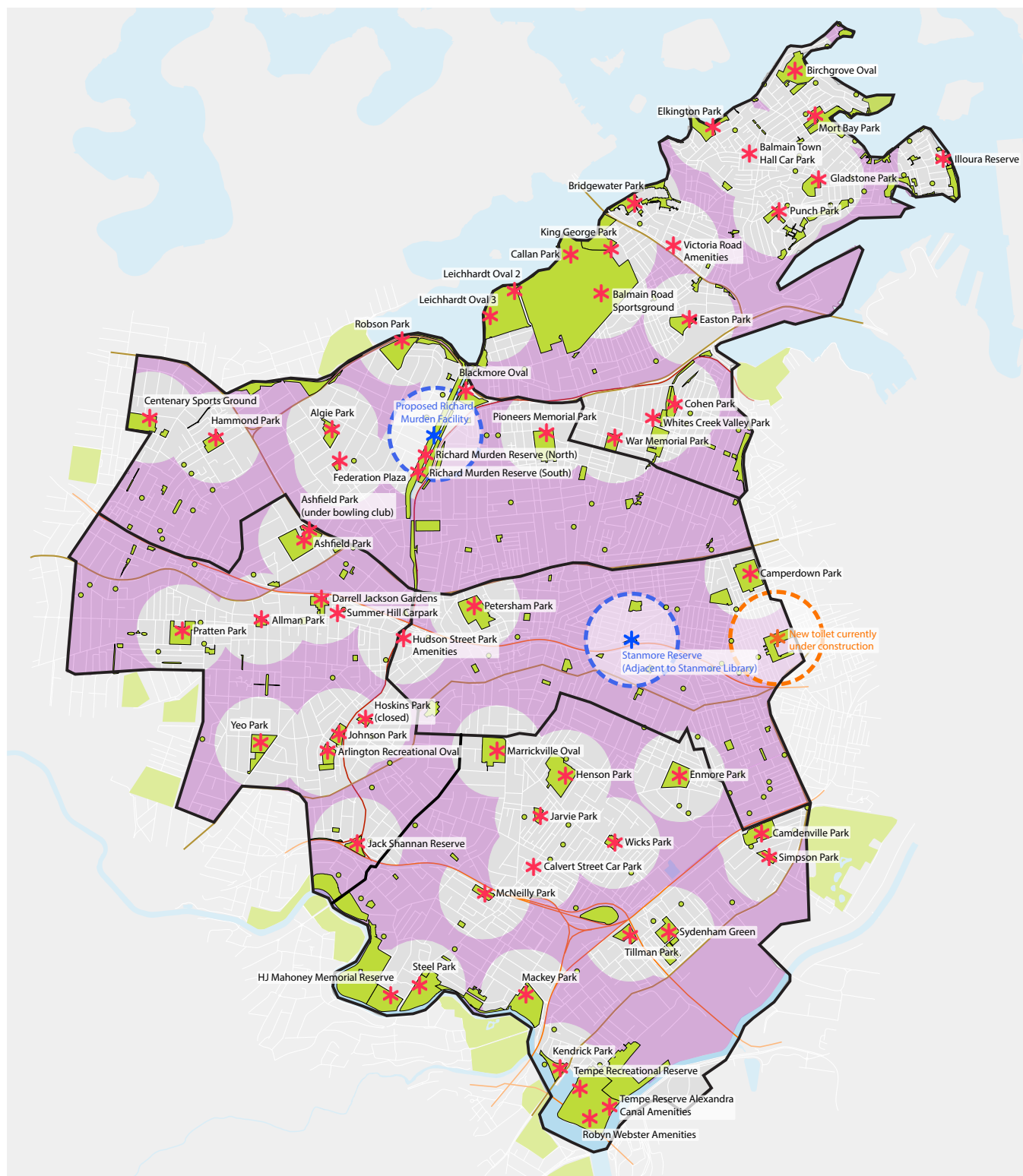
Easton Park
Arlington Recreation Reserve
Richard Murden Reserve
Johnson Park
Mallam Reserve
Camdenville Park
Kendrick Park
Pratten Park
H.J Memorial Rest Park
Henson Park
Mackey Park

STEEL PARK- Lift and Change Facility

An opportunity for adult lift and change facility in the Steel Park area has been identified to service the all abilities playground, parklands and Cooks River area. Two options are proposed:

Option 1- Repurpose the existing amenities adjacent to the playground area.

Option 2- Investigate opportunities to include a lift and change facility within the PCYC facility.



Map 3 - Proposed New Facilities

05

IMPLEMENTATION PLAN

Implementation of Plan of Management

The majority of funding for general maintenance and improvement works of Public Toilets across the Inner West comes from rates revenue, and occasionally grants are obtained for specific projects.

Funds may also be obtained through Section 94 Contributions, which are generated from developments within the municipality.

Review and monitoring of the Plan of Management

It is imperative the Inner West Council Public Toilet Strategy Plan remains relevant. Frequent reviews of the plan are proposed to ensure the plan continues to accurately reflect community needs. Frequent reviews also allow planning to ensure resources are available to meet the public toilet design principles and objectives.

It is recommended reviews occur at the following frequency:

- Annually- review the action plan items and modify accordingly
- After 5 years- Major review of document
- 10 years- Major review and re-write of document

Potential changes to the plan may occur due to the following:

- New legislation.
- Changes in community values.
- Changes to project priorities.

Additionally, an annual progress review of all public toilet works should be undertaken in order to assess and review against the action plan.

06

ADDITIONAL RESOURCES

Additional Resources

Outlined below are resources which informed the Inner West Council Public Toilet Strategy and contain additional information.

Publications:

Title / Website	Author	Year
Exploring Accessibility and Inclusion in Public Toilets	Katherine Webber	2018
https://www.stalled.online/	N/A	N/A
https://toolkit.phlush.org/	N/A	N/A
http://www.fxcollaborative.com/activity/publications/14/bathrooms-for-human/		
https://aroundthetoilet.wordpress.com/	N/A	N/A
https://aroundthetoilet.wixsite.com/toiletdesign toolkit	N/A	N/A

07

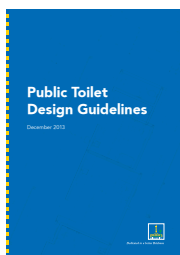
BENCHMARK STUDY

Introduction

The following section reviews best practice in public toilet design by evaluating existing best practice facilities and other Council Public Toilet Strategy Plans. Best practice toilet facilities provide a safe and hygienic toilet experience and a checklist of best practice criteria is outlined.

Document Review

The following documents were reviewed for best practice public toilet design:



Brisbane City Council [2013]



City of Sydney [2014]



City of Yarra [2017-2027]



Wollongong City Council [2019-2029]



City of Hobart [2015-2025]

Benchmark Examples

The following toilets highlight best practice public toilet design and are analysed in the following pages. The toilets are located across a variety of park types and have similar issues to facilities across the Inner West LGA.

01_Regional Park	Sydney Park (St Peters)
02_Regional Park and Sports ground	Rushcutters Bay Park (Rushcutters Bay)
03_District Park and Sporting Ground	Turrawul Park (Rosebury)
04_Local Park- Beare Park	Beare Park (Elizabeth Bay)
05_District Park	Pirrama Park (Pyrmont)
06_Local Park	HJ Foley Rest Park (Glebe)

Location Map of Best Practice Facilities



07

BENCHMARK STUDY

SYDNEY PARK

SUBURB	St Peters
ARCHITECT	Stanic Harding Architects
BUILDING	The toilets are a new building facility
SIGNAGE	Signage is limited to standard NCC requirements

THE SITE



The facility is located at the north-west end of Sydney Park. The park is a regional park in Sydney. The toilets are located adjacent a children's playground in the park. There is a direct pathway connection to a nearby car park. The toilets have an open aspect to a turfed area and kiosk. The rear of the facility backs onto tree and shrub planting.

THE SITE AND SAFETY

The cafe and play facilities provide surveillance during daylight hours. After sunset the close shrubbery behind the toilets act to provide locations for concealment.

THE BUILDING



There are two toilet buildings located adjacent one another. The individual toilet buildings have hand wash and baby change facilities within the toilet. The facilities have stainless steel fittings and fixtures. The toilets have tiled wall finishes, and concrete floor finishes. The facilities are DDA compliant. The facilities have hand washing, soap and drying facilities as well as waste bin facilities provided. The toilets are lockable after hours via door locks.

LIGHTING

The toilets have abundant natural light via high level openings and vertical light wells. At night lighting is provided on the pathways around the toilet. Shrubbery adjacent the facilities does act to provide dark shadows and potential concealment opportunities

THE MATERIALS



* Hand wash basin	* Soap provided	* Waste bin	* Tile floors	* Concrete floors	* DDA compliant	* Mirror	* Concealed cisterns	* Sanitary disposal	* Baby change facilities	* Light coloured walls	* Good natural light	* Good natural ventilation	* Externally opening toilets	* Communal hand wash facilities	* Unisex
-------------------	-----------------	-------------	---------------	-------------------	-----------------	----------	----------------------	---------------------	--------------------------	------------------------	----------------------	----------------------------	------------------------------	---------------------------------	----------



The toilet has a concealed cistern and stainless steel fixtures and fittings.



Open views are provided across the turf to a cafe.



Walls are designed to capture natural light and ventilation.



Baby change facilities provided.



Sharps disposal, mirror, soap, hand washing and drying facilities as well as sanitary napkin disposal are provided.

07

BENCHMARK STUDY

TURRUWUL PARK

SUBURB	Rosebury
ARCHITECT	HASSELL
BUILDING	The building is a new building to replace an existing facility that was incorrectly located within the park.
SIGNAGE	Signage is limited to standard NCC requirements
THE SITE	Turruwul park is a district park and includes a sports ground The toilet is located at the northern edge of the park, beneath a large canopy fig tree and landscape pavilion that includes canteen and storage. The toilet is located adjacent play facilities, bike racks, picnic and BBQ facilities. It is located less than 30 metres from the street and has clear sight lines.
THE SITE AND SAFETY	The close proximity of the facility to a play ground, bike racks, picnic, BBQ and the road allows for excellent surveillance. There is also limited areas for people to loiter outside the facilities. There are clear sight lines from across the playing fields and nearby street.
THE BUILDING	The toilets are separated with male and female cubicles. Each toilet is accessible from the external space. Each toilet is configured to accommodate toilet, baby change table and wash facilities including a mirror. The male toilet also has a urinal. The facility fixtures and finishes are stainless steel, except for the urinal which is porcelain. Wall finishes are tiled and or sealed concrete. Floor finishes are sealed concrete. The toilets are lockable after hours via door locks.
LIGHTING	External and internal lighting is provided. Feature lighting is provided to the adjacent tree helping to illuminate the building surrounds.

THE MATERIALS



* Hand wash basin	* Soap provided	* Waste bin	* Tile floors	* Concrete floors	* DDA compliant	* Mirror	* Concealed cisterns	* Sanitary disposal	* Baby change facilities	* Light coloured walls	* Good natural light	* Good natural ventilation	* Externally opening toilets	* Communal hand wash facilities	* Unisex
-------------------	-----------------	-------------	---------------	-------------------	-----------------	----------	----------------------	---------------------	--------------------------	------------------------	----------------------	----------------------------	------------------------------	---------------------------------	----------



The toilet has a concealed cistern and stainless steel fixtures and fittings.



Stainless steel baby change facility.



Urinal in male toilet adjacent to toilet pan.



Walls are designed to capture natural light and ventilation.



Toilets open onto the public space.



DDA compliant facilities.



There are clear views to the facility from around the park.

07

BENCHMARK STUDY

RUSHCUTTERS BAY PARK

SUBURB	Rushcutters Bay
ARCHITECT	Lacoste + Stephenson
BUILDING	The facility is a partial renovation and new built in keeping with the original heritage grandstand building. The new facility has a similar appearance, detailing and graphics as per the adjacent pavilion and cafe
SIGNAGE	Male and female emoticons are used as super-graphics near the entry doors. The graphics may help with way finding and identification in a building that does not appear as a traditional toilet building.
THE SITE	Rushcutters Bay Park is a regional park and sports ground. The toilets are located near the adjacent road within Rushcutters Bay Park. The toilets are built as part of the grandstand and include storage facilities and council lunch rooms. The toilets are constructed from the same building materials and have the same graphic insignia as a nearby pavilion. The toilets are set in a heavily planted section of the park with extensive ground cover and tree plantings.
THE SITE AND SAFETY	The toilets have clear opening to their entries, allowing good surveillance from the immediate surrounds. There are some hidden corners between the toilets and the grandstand building that are not ideal for providing a safe environment. Nearby seating allows for the potential for people to loiter and watch entries.
THE BUILDING	The male and female toilets are in separate buildings, connected via a grandstand and decking. The toilets are a new addition to an existing heritage grandstand. Facilities have stainless steel fittings and fixtures and porcelain pans. Wall and floor finishes are tiled. Wash facilities are in the communal space outside the cubicles, with separate male and female areas. The toilets are lockable after hours via timber doors.
LIGHTING	The toilets have adequate natural light and are closed at night. There is park lighting on adjacent pathways.

THE MATERIALS



* Hand wash basin	* Soap provided	Waste bin	* Tile floors	Concrete floors	* DDA compliant	* Mirror	* Concealed cisterns	* Sanitary disposal	Baby change facilities	* Light coloured walls	* Good natural light	* Good natural ventilation	Externally opening toilets	Communal hand wash facilities	Unisex
-------------------	-----------------	-----------	---------------	-----------------	-----------------	----------	----------------------	---------------------	------------------------	------------------------	----------------------	----------------------------	----------------------------	-------------------------------	--------



Toilet with concealed cistern, porcelain pan and stainless steel fixtures.



Pavilion (foreground), toilets and grandstand (background).



Hand wash facilities in view of entry door. Mirror, soap and hand dryer provided.



Walls are designed to capture natural light and ventilation.



Timber detail used on new timber buildings within park.

07

BENCHMARK STUDY

BEARE PARK

SUBURB	Elizabeth Bay
ARCHITECT	Sam Crawford Architects
THE BUILDING	The facility was originally a typical 1960s toilet block that was renovated to the current configuration.
SIGNAGE	Signage includes both standard regulatory signage as well as specific graphic identification elements.

THE SITE



Beare Park is a local park located on Sydney Harbour. The toilet is located across open turf areas away from the park entry and road. The toilets are oriented to face the road and open space, allowing for views across the park. The toilets have vegetation to their surrounds and include a green roof.

THE SITE AND SAFETY

The open views across the park provide good surveillance of the entries. The communal space for hand washing also increased surveillance immediately outside of the toilets. Vegetation close to the building is open at eye level and does not significantly increase concealment opportunities.

THE BUILDING



The toilets are configured with separate male and female toilet facilities. The male cubicle includes both a toilet bowl and urinal. Both toilets open onto a public communal space. Baby change, hand washing, soap and hand drying facilities are located in a communal area. Fixings and fittings are stainless steel. The floor is sealed concrete, and the walls are light coloured tiles.

LIGHTING

A sensor light is provided in both the communal and toilet spaces. Limited park lighting is provided. The building has been designed to maximise natural light entering the building.

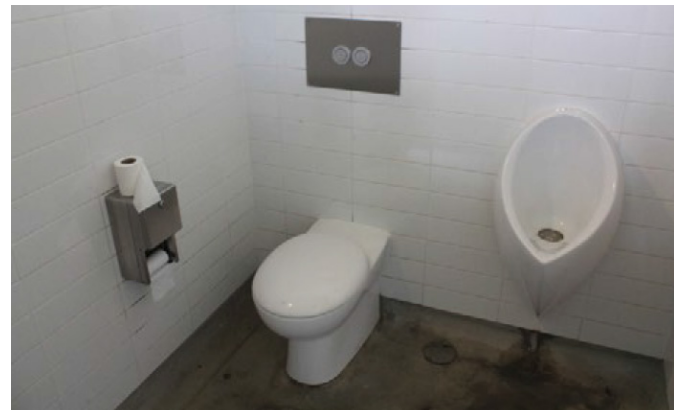
THE MATERIALS



* Hand wash basin	* Soap provided	Waste bin	Tile floors	* Concrete floors	* DDA compliant	* Mirror	* Concealed cisterns	* Sanitary disposal	Baby change facilities	* Light coloured walls	* Good natural light	* Good natural ventilation	Externally opening toilets	* Communal hand wash facilities	Unisex
-------------------	-----------------	-----------	-------------	-------------------	-----------------	----------	----------------------	---------------------	------------------------	------------------------	----------------------	----------------------------	----------------------------	---------------------------------	--------



Communal hand washing, baby change and hand drying facilities.



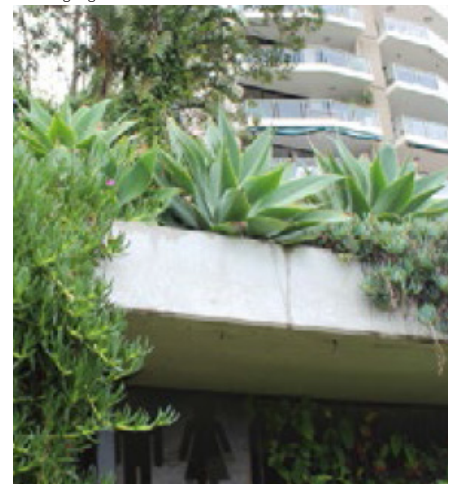
Open views across the park to the toilet facility allow casual surveillance.



Toilet super-graphics and identification signage.



Male and female toilets open onto communal areas. Male toilet has single use urinal in cubicle.



Integrated green roof.

07

BENCHMARK STUDY

PIRRAMA PARK

SUBURB	Pymont
ARCHITECTS	Hills Thalys Architecture and Urban Projects
BUILDING	The toilets are a new purpose built facility.
SIGNAGE	Signage is provided as standard NCC requirements.

THE SITE



Pirrama Park is a district park located on Sydney Harbour. The toilets are located at the western end of the park adjacent to the road, though located below road level. The toilets are part of a larger shade structure and have a retaining wall on their southern side. The toilets open onto a landscape open space and picnic area.

THE SITE AND SAFETY

The toilets have limited casual surveillance. The positioning of the toilets away and below road level compromises surveillance. The large forecourt and views from nearby seating does provide additional surveillance. The design of the facility itself and ample night lighting helps to create a safer environment despite other site issues.

THE BUILDING



The toilets are separated into male and female cubicles that open onto the public space. The wash facilities are in the communal area outside the toilets. The male toilets feature two communal urinals and a single toilet in a separate area, while the female has three toilets. The toilets have tiled walls and concrete floors. The toilets have both porcelain and stainless steel fittings and fixtures. The wash facilities have stainless taps, but concrete hand basins. The toilets have timber doors and the communal area is lockable via a timber screen.

LIGHTING

The toilets have limited natural light. Electric lighting has been provided for both day and night use.

THE MATERIALS



* Hand wash basin	* Soap provided	Waste bin	Tile floors	* Concrete floors	* DDA compliant	* Mirror	* Concealed cisterns	* Sanitary disposal	* Baby change facilities	* Light coloured walls	* Good natural light	* Good natural ventilation	* Externally opening toilets	* Communal hand wash facilities	Unisex
-------------------	-----------------	-----------	-------------	-------------------	-----------------	----------	----------------------	---------------------	--------------------------	------------------------	----------------------	----------------------------	------------------------------	---------------------------------	--------



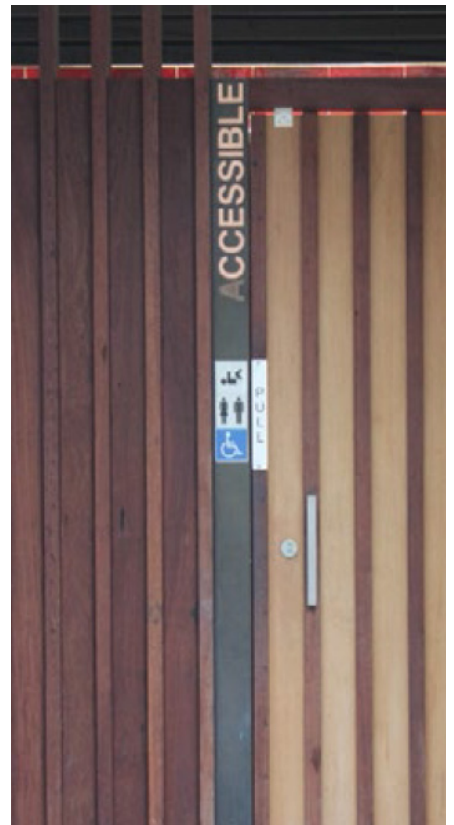
Toilet with concealed cistern.



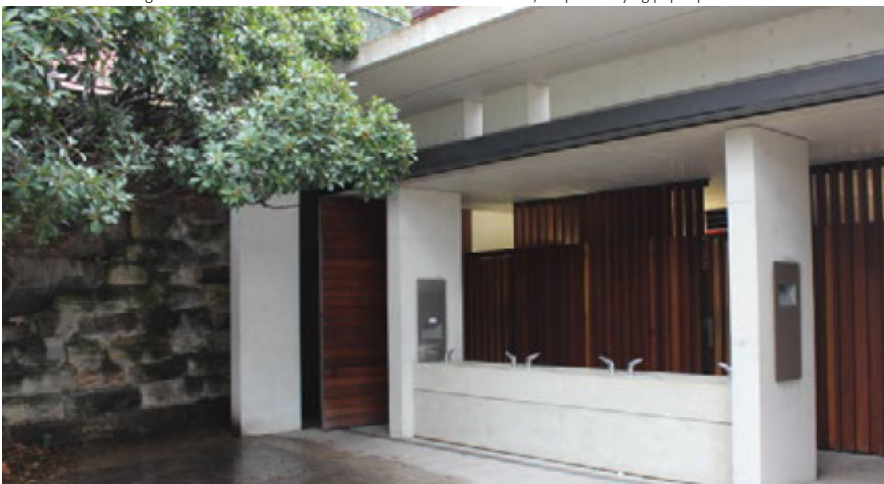
Male toilet has x2 single use urinals.



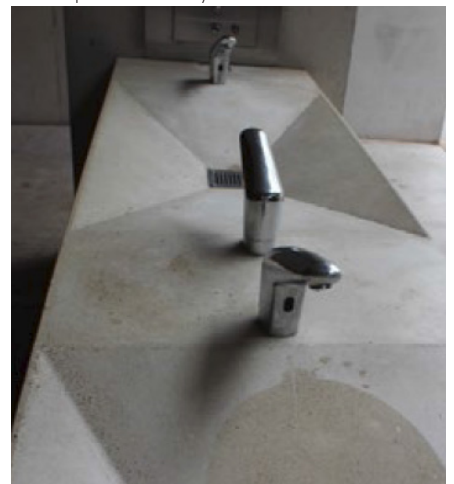
Hand wash, soap and drying paper provided.



DDA compliant unisex facility.



Communal hand wash facilities. The whole facility is lockable behind concertina doors.



Concrete basin with sensor taps.

07

BEST PRACTICE ANALYSIS

Best Practice Criteria

Listed below are the best practice criteria for Public Toilets. This list is based on reviews of best practice toilet examples. This criteria is used in the next chapter to analyse the existing public toilets within the Inner West Council.

The key criteria adopted for successful public amenities facility are as follows:

- | | |
|---|---|
| <input checked="" type="checkbox"/> Hand wash, soap and hand drying facilities | <input checked="" type="checkbox"/> Sanitary disposal |
| <input checked="" type="checkbox"/> Waste bins and feminine hygiene disposal | <input checked="" type="checkbox"/> Baby change facilities |
| <input checked="" type="checkbox"/> Dark coloured floors (tiled or sealed concrete) | <input checked="" type="checkbox"/> Good natural light |
| <input checked="" type="checkbox"/> Light coloured walls (preference for tiles) | <input checked="" type="checkbox"/> Good natural ventilation |
| <input checked="" type="checkbox"/> DDA compliance | <input checked="" type="checkbox"/> Externally opening toilets |
| <input checked="" type="checkbox"/> Mirrors | <input checked="" type="checkbox"/> Communal hand wash facilities |
| <input checked="" type="checkbox"/> Concealed cisterns | <input checked="" type="checkbox"/> Gender neutral |

This Page has been Intentionally Left Blank