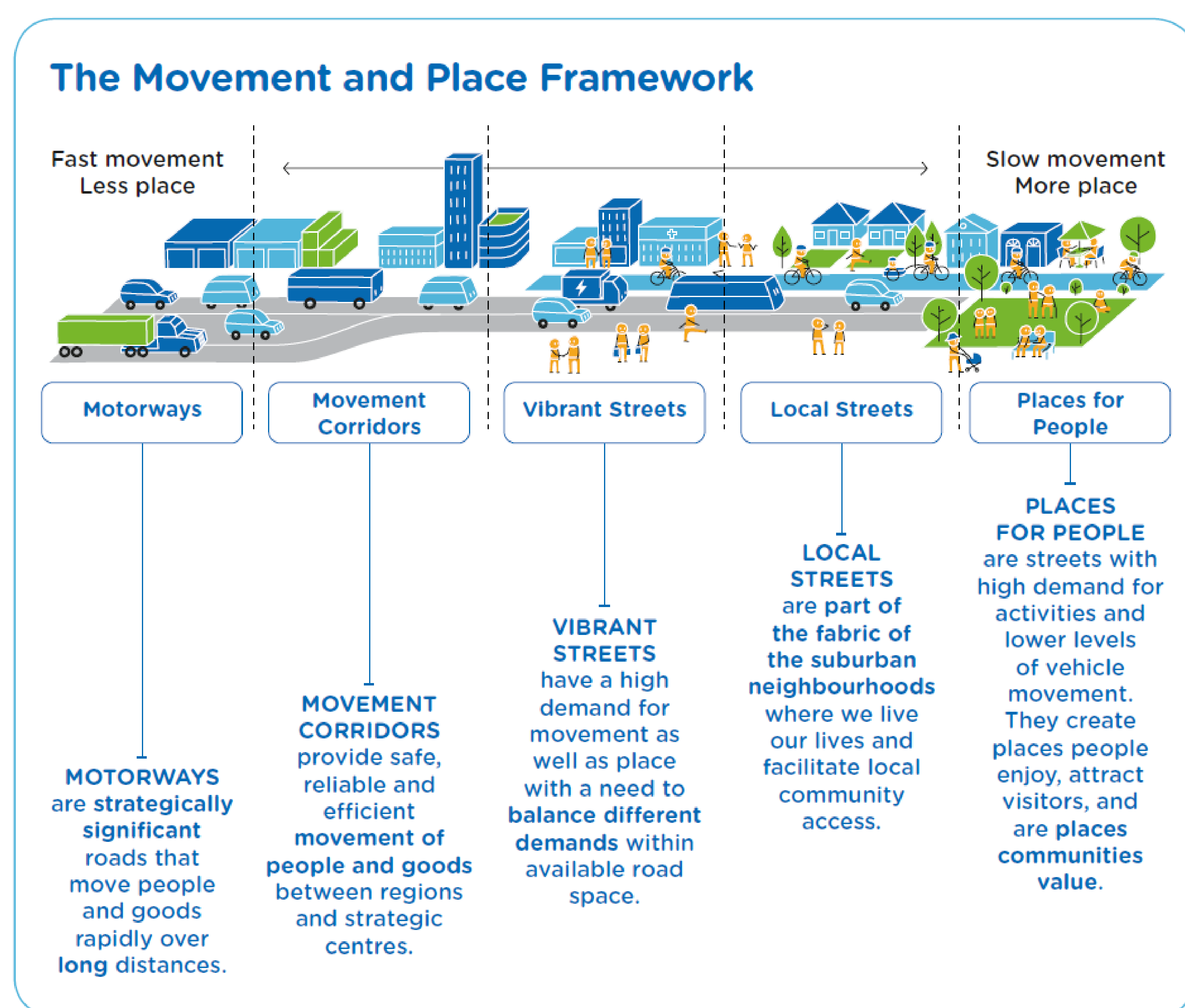


Going places

your say
Inner West



Find out more on page 6 of our publication *Going Places*

Integrated land use and transport plans improve the function and urban design of road space.

The vision for Inner West transport

“Growing numbers of Inner West residents, workers and visitors prefer to walk, cycle and use public transport because it is safe, convenient, enjoyable and healthy.

Everyone is connected to their community and local services, and can access educational, retail, cultural and recreational districts, as well as jobs and services across local and regional areas.

The transport network enhances local economic vitality, with freight and goods movements separated from people by space and/ or time.”

Find out more on page 30 of our publication *Going Places*

Inner West values guide future transport projects and decisions. Transport projects that fit these values will be financially and environmentally sustainable.

Safe

Everyone is, and feels, safe at all times and the network is designed to support the safety for all users, especially vulnerable users.

Just

Transport is accessible, affordable and inclusive, without barriers, regardless of ability.

Trustworthy

Inner West transport can be relied upon for all types of trips. It is resilient to climate change and responds to changing needs.

Clean

Transport will enhance the local and global environment and progress towards zero carbon emissions.

Comfortable

There is enough space for people on their journeys, and the system is legible and easy to navigate.

Viable

Transport is effective and efficient for the customer and the provider, and supports local economies.



Find out more on page 31 of our publication *Going Places*