

Public domain works - Dulwich Hill Station precinct - Stage A

Dulwich Hill Train Station has been in operation since 1895 and is on the T3 Liverpool via Bankstown line. The NSW Government is delivering Southwest Sydney Metro with a planned stop at Dulwich Hill Station. The works are underway by Transport for NSW (TfNSW) of upgrading existing T3 rail line to Sydney Metro. Dulwich Hill station will be upgraded as part of these works.

We are implementing the Dulwich Hill Station precinct Mater Plan adopted in August 2018. The infrastructure in the surrounding areas of Dulwich Hill has degraded over time. Improvements to the public domain will provide an environment that fosters spaces for the community to live their life including recreation and social activity. The proposed works will improve pedestrian access and safety around Dulwich Hill Station and transform the public spaces surrounding the station into a pedestrian oriented village.

The works will be delivered in 4 stages:

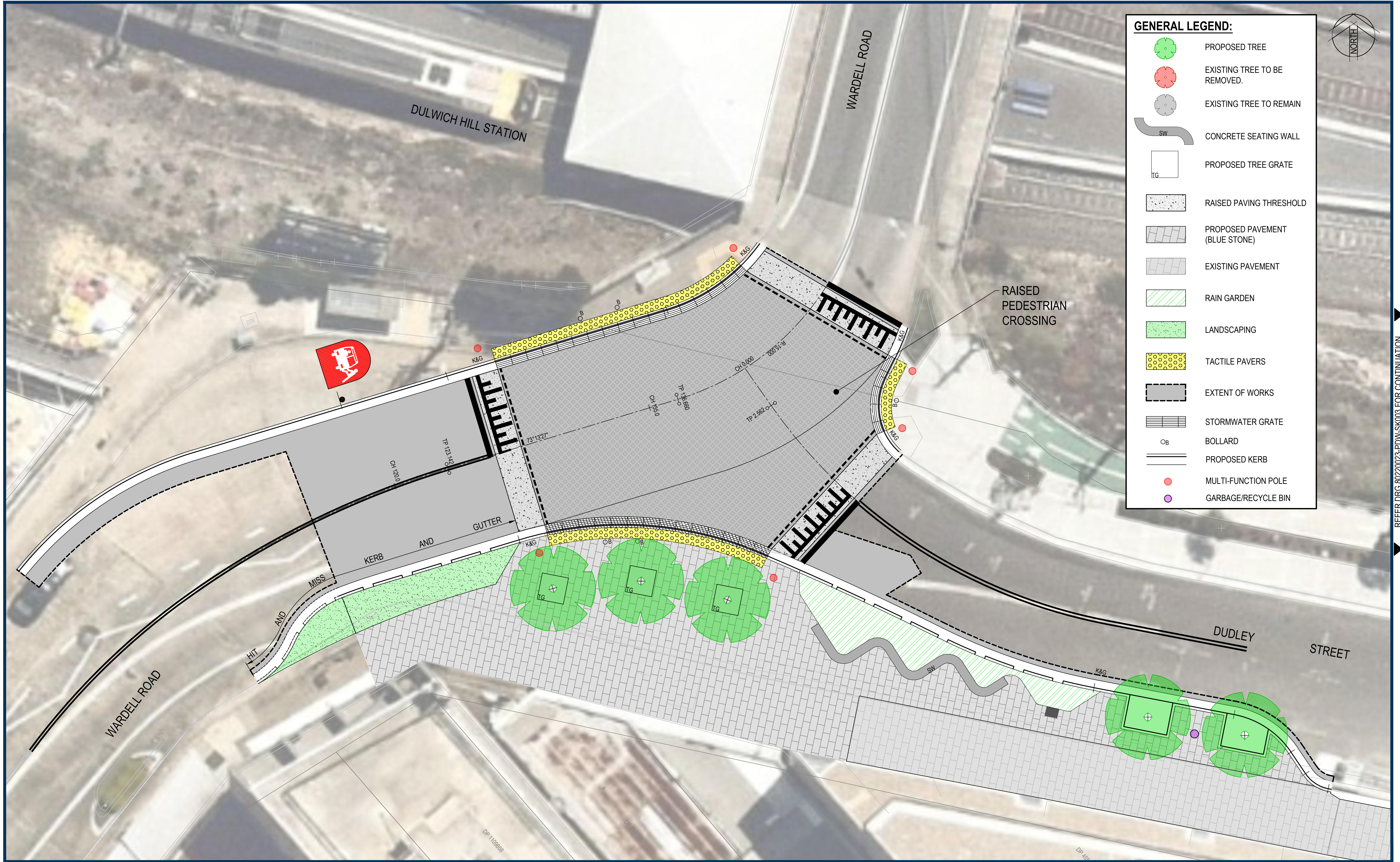
- Stage A - Wardell Road - Dudley Street Intersection works, Dudley Street footpath works
- Stage B - Raised Entry Thresholds on Wardell Road, Bedford Cres and Wardell Road - Ewart Street intersection
- Stage C - Road works on Wardell Road from Wilga Ave to Ewart Street
- Stage D - Road works on Ewart Street between Murray Lane and Ewart Lane

The proposed works for Stage A include:

- A raised, signalised intersection at Wardell Road / Dudley Street
- New footpath surface and improved accessibility along the southern side of Dudley Street
- New street trees along the southern side of Dudley Street to improve landscaping
- Raingarden on Dudley Street to improve urban stormwater runoff quality
- A kerb extension on the southern side of Dudley Street at the intersection with Wardell road
- Minor pavement works on Dudley Street
- Smart poles at the intersection at Wardell Road / Dudley Street
- Overhead cables on part of Dudley Street will be placed underground

Many of the upgrades aim to improve pedestrian and cyclist safety and efficiency throughout the precinct and facilitate access to and from the station. The raised entry will signify start of a pedestrian-oriented village and will reduce vehicle travel speeds. Kerb extensions will also narrow the road to help reduce vehicle speeds and provide additional footpath space for pedestrians. This space can be used for outdoor dining and street furniture for improved amenity. The raised, signalised intersection at Wardell Road / Dudley Street will provide additional crossings for pedestrians and cyclists and will include cycle lanterns to provide a continuous cycle route from Dudley Street towards Ewart Lane.

Construction is expected to start in October 2020.



GENERAL LEGEND:	
	PROPOSED TREE
	EXISTING TREE TO BE REMOVED.
	EXISTING TREE TO REMAIN
	CONCRETE SEATING WALL
	PROPOSED TREE GRATE
	RAISED PAVING THRESHOLD
	PROPOSED PAVEMENT (BLUE STONE)
	EXISTING PAVEMENT
	RAIN GARDEN
	LANDSCAPING
	TACTILE PAVERS
	EXTENT OF WORKS
	STORMWATER GRATE
	BOLLARD
	PROPOSED KERB
	MULTI-FUNCTION POLE
	GARBAGE/RECYCLE BIN

REFER DRG 80220023-PDW-SK003 FOR CONTINUATION



Sydney Tel: 02 9496 7700

© Cardno Limited All Rights Reserved.
This document is produced by Cardno Limited solely for the benefit of and use by the client in accordance with the terms of the retainer. Cardno Limited does not and shall not assume any responsibility or liability whatsoever to any third party arising out of any use or reliance by third party on the content of this document.

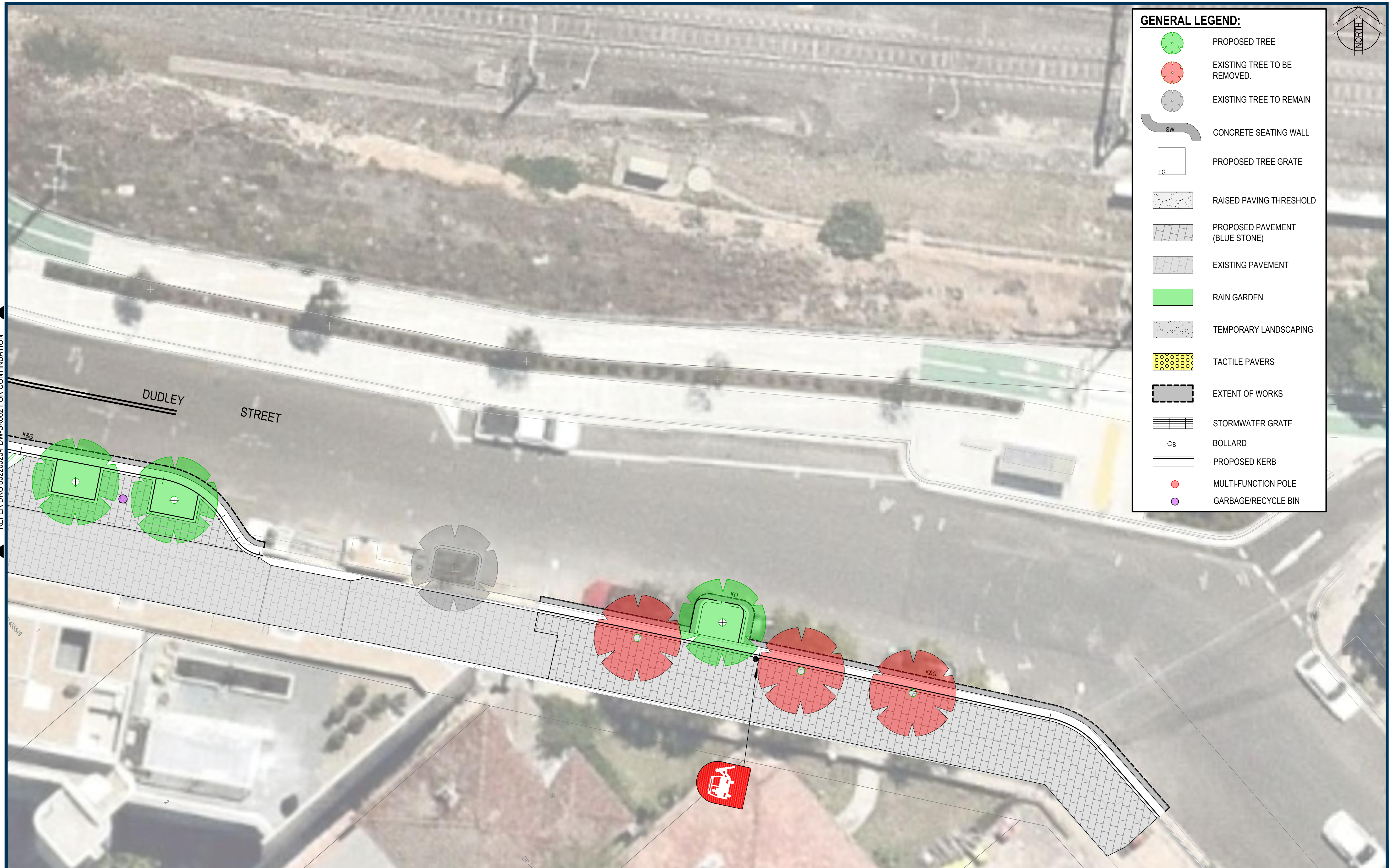


INNER WEST COUNCIL
DULWICH HILL STATION PRECINCT
PUBLIC DOMAIN WORKS - STAGE A

Date JUN'20
Scale 1:100
ISSUE FOR INFORMATION ONLY
80220023-PDW-SK002
Drawing Number

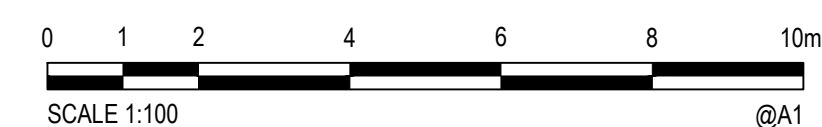
Size A1
Revision 2

REFER DRG 80220023-PDW-SK002 FOR CONTINUATION



Sydney Tel: 02 9496 7700

© Cardno Limited All Rights Reserved.
This document is produced by Cardno Limited solely for the benefit of and use by the client in accordance with the terms of the retainer. Cardno Limited does not and shall not assume any responsibility or liability whatsoever to any third party arising out of any use or reliance by third party on the content of this document.



INNER WEST COUNCIL
DULWICH HILL STATION PRECINCT
PUBLIC DOMAIN WORKS - STAGE A

Date
MAY'20
Scale
1:100
ISSUE FOR INFORMATION ONLY
80220023-PDW-SK003
Drawing Number

Size
A1
2
Revision