

INNER WEST



Engagement outcomes report *Annual playground upgrade 2021*

Contents

Summary	3
Background.....	3
Engagement methods.....	3
Promotion.....	4
Engagement outcomes	4
Mort Bay Park	4
King George Park Playground.....	6
Lion Street Playground	9
Rose Street Playground	11
John Paton Reserve.....	14
Rowe Playground	16
Kendrick Park.....	19
What happens next.....	22

Summary

Community feedback was sought between 19 November and 12 December 2021 to inform the decision making and priorities for the annual playground upgrade project.

The project was promoted via letters to residents surrounding the park, onsite posters, Your Say Inner West e-newsletter and Council's website.

In total, 322 participants visited the Your Say Inner West project page, 91 participants provided feedback via the online survey and five provided feedback via email. All responses are included in this report.

For detailed engagement outcomes for each playground, see the Engagement outcomes section on page 4.

Background

Each year, Inner West Council undertakes a review of the playgrounds across the local government area as part of our Park Assets Prioritisation Program. This review considers the age and condition of equipment, and provision of play experiences.

This year the following seven playgrounds were identified as being due for an upgrade:

- Mort Bay Park, Birchgrove
- King George Park, Rozelle
- Lion Street Playground, Croydon
- Rose Street Playground, Ashfield
- John Paton Reserve, Summer Hill
- Rowe Playground, Dulwich Hill
- Kendrick Park, Tempe

Engagement methods

The community could provide feedback via:

- Your Say Inner West online survey
- Email
- Phone (including via the National Relay Service for TIS National)

Promotion

The engagement was promoted through:

- Council website
- Council social media
- Resident letterbox drop
- Direct email
- Onsite posters
- YSIW e-newsletter

Engagement outcomes

Mort Bay Park

Of the 91 survey participants, 18 provided feedback on Mort Bay Park.

The scope of this upgrade was to introduce new play activities and a new play space to replace the timber deck unit. Opportunities were to utilise the natural shade available and to reference the location through water/boat theming and improving views to the bay.

How is the park currently used?

Most respondents visit this playground with children aged 0–3 years (72%) and 4–7 years (44%).

Most respondents visit the playground weekly (67%).

What does the community want to see in the upgrades?

The community would like to see more imaginative play, nature play, slides and multi play unit:

- Imaginative play (13 votes)
- Nature play (8 votes)
- Sliding (6 votes)
- Multi play unit (6 votes)

The community listed the following elements when asked ‘What do you like most about Mort Bay Park?’

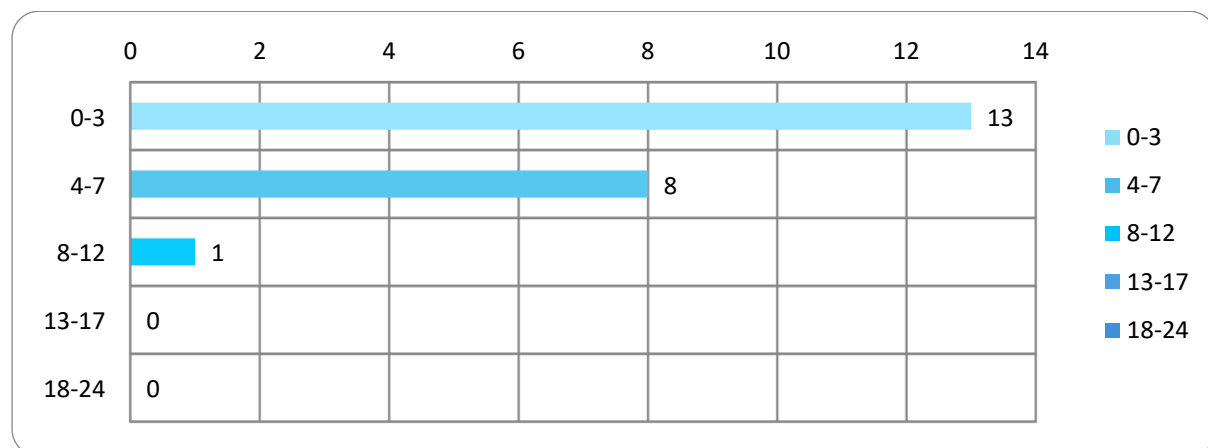
- Variety of play equipment

- Safe and accessible equipment for kids under 3
- Views to the water

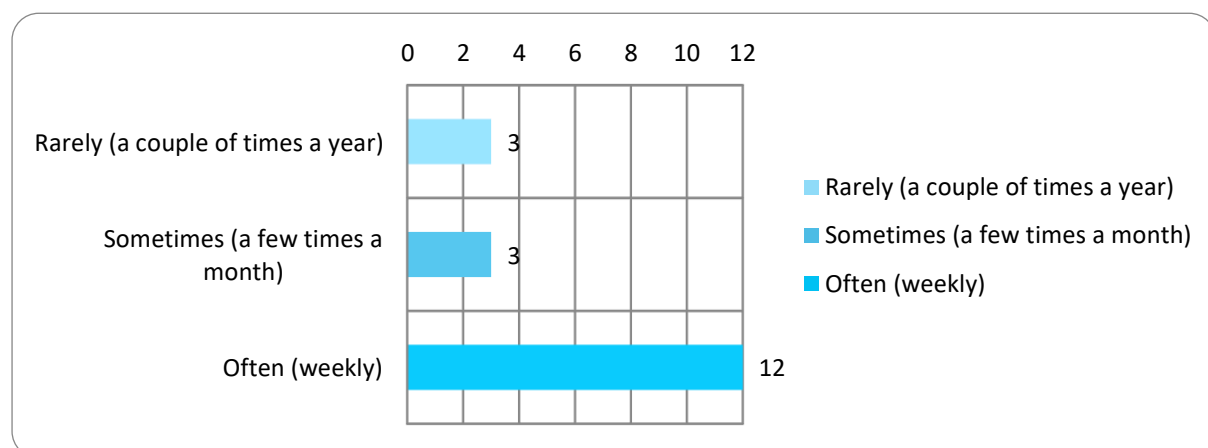
Additional comments include:

- The timber deck unit blocks visibility to supervise younger children at all times

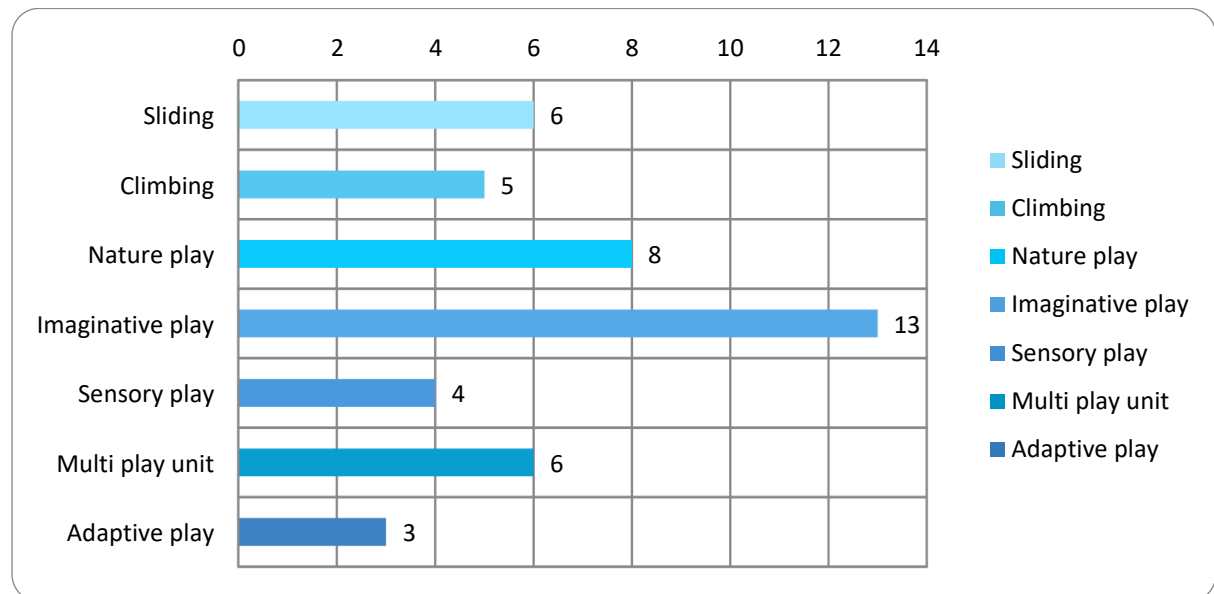
Graph showing responses to the question 'How old are the children/young people you accompany to playgrounds?'



Graph showing responses to the question 'How often do you visit Mort Bay Park?'



Graph showing responses to the question ‘What play experiences would you like to see to replace the timber deck unit at Mort Bay Park?’



King George Park Playground

Of the 91 survey participants, 13 provided feedback on King George Park.

The current play space is split into two areas: the main play area and the flying fox area. The flying fox and some of the play equipment in the main play area are in good condition. The pathways, softfall and sandpit areas are degraded and can be improved.

The opportunities in this upgrade are to review the existing Constellation theme, make changes to the sandpit area, add new shade sails, and to upgrade the degraded softfall.

The King George Park playground upgrade is funded by Transport for NSW in compensation for the WestConnex project.

How is the park currently used?

Respondents mostly visit this playground with children aged 7 years and younger. Half of respondents (46%) accompany more than one child at a time to the playground.

Of the 13 survey participants, 69% visit the playground at least a few times a month, with 3 respondents visiting weekly.

What does the community want to see in the upgrades?

The community would like to see more imaginative play, water-based play and nature play opportunities:

- Imaginative play (10 votes)
- Water play (8 votes)
- Nature play (7 votes)

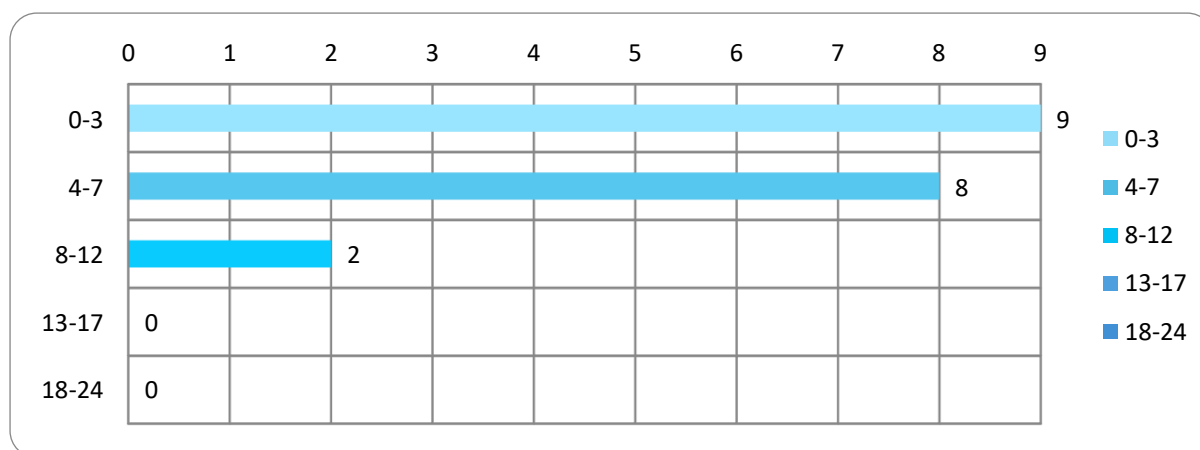
The community listed the following elements when asked 'What do you like most about King George Park?'

- Big space and the existing slide, flying fox
- Proximity to the Bay Run

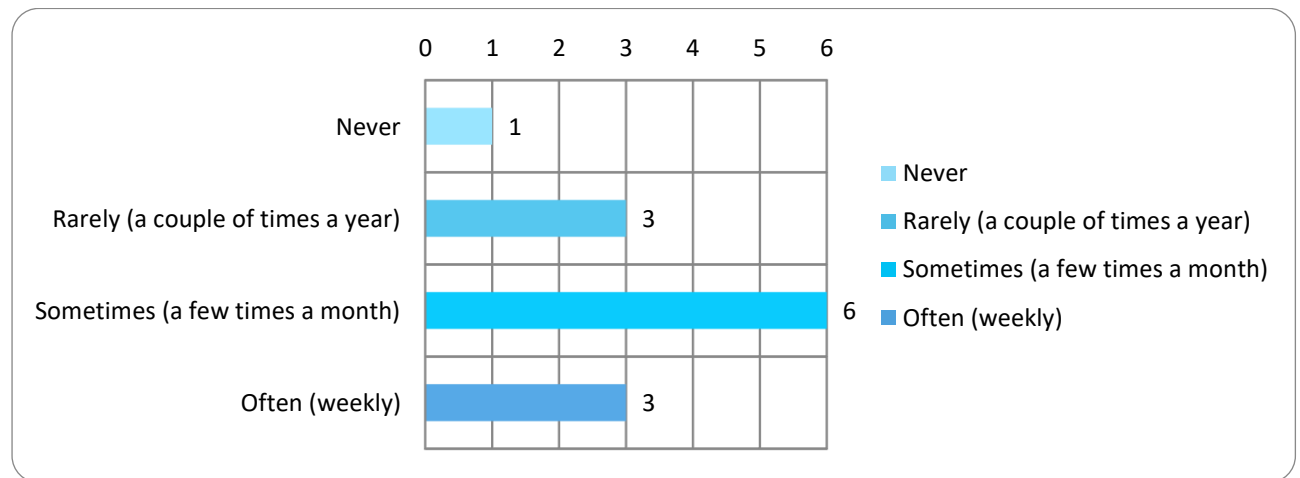
Additional comments include:

- It is a soulless playground – opportunity for water park
- Needs monkey bars and more swings
- Diggers in sandpit

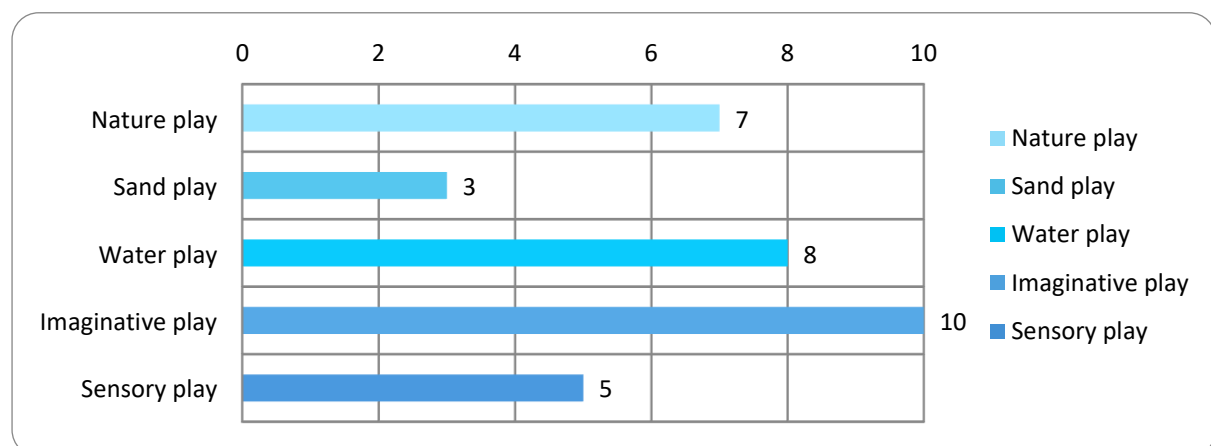
Graph showing responses to the question 'How old are the children/young people you accompany to playgrounds?'



Graph showing responses to the question 'How often do you visit King George Park?'



Graph showing responses to the question 'What play experiences would you like to see in the old sandpit area at King George Park?'



Lion Street Playground

Of the 91 survey participants, 23 provided feedback on Lion Street Playground.

Feedback demonstrated that this is a playground with most participants visiting at least a few times a month. Children of all ages use the playground with the most common age groups being 0-3 years old and 4-7 years old.

The opportunities in this upgrade are to replace all existing play equipment.

How is the park currently used?

Most respondents visit this playground with children aged 0-3 years (78%) and 4-7 years (52%). Half of respondents (48%) accompany more than one child at a time to the playground.

Most respondents visit the playground at least a few times a month (70%). One third of respondents visit the playground rarely (ie. a couple of times a year).

What does the community want to see in the upgrades?

The community would like to see more imaginative play, swinging, climbing and nature play:

- Imaginative play (16 votes)
- Swinging (11 votes)
- Climbing (9 votes)
- Nature play (9 votes)

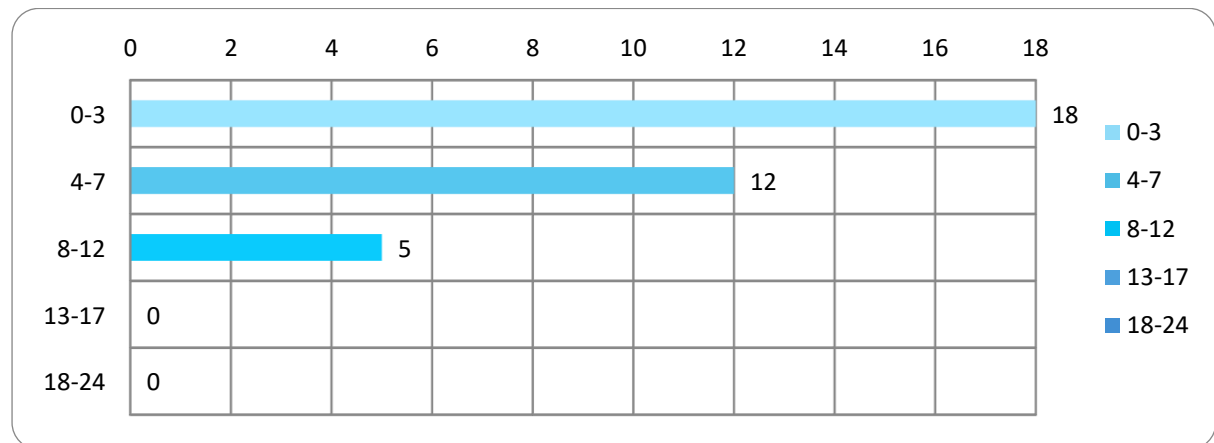
The community listed the following elements when asked 'What do you like most about Lion Street Playground?'

- Proximity to houses
- Community feel
- Large grass areas in park
- The park is fenced making it feel safe
- Small tables and benches

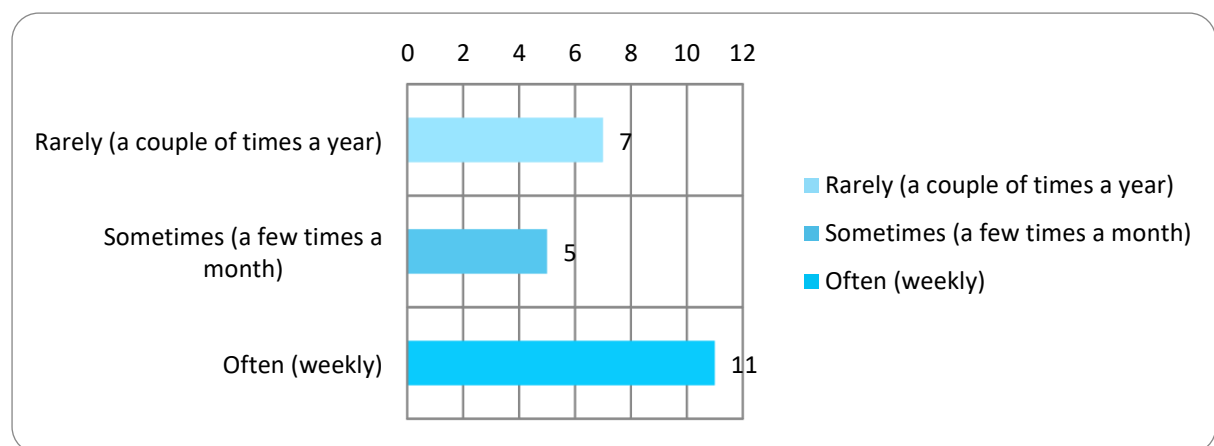
Additional comments include:

- Shade is needed
- Quiet and private park

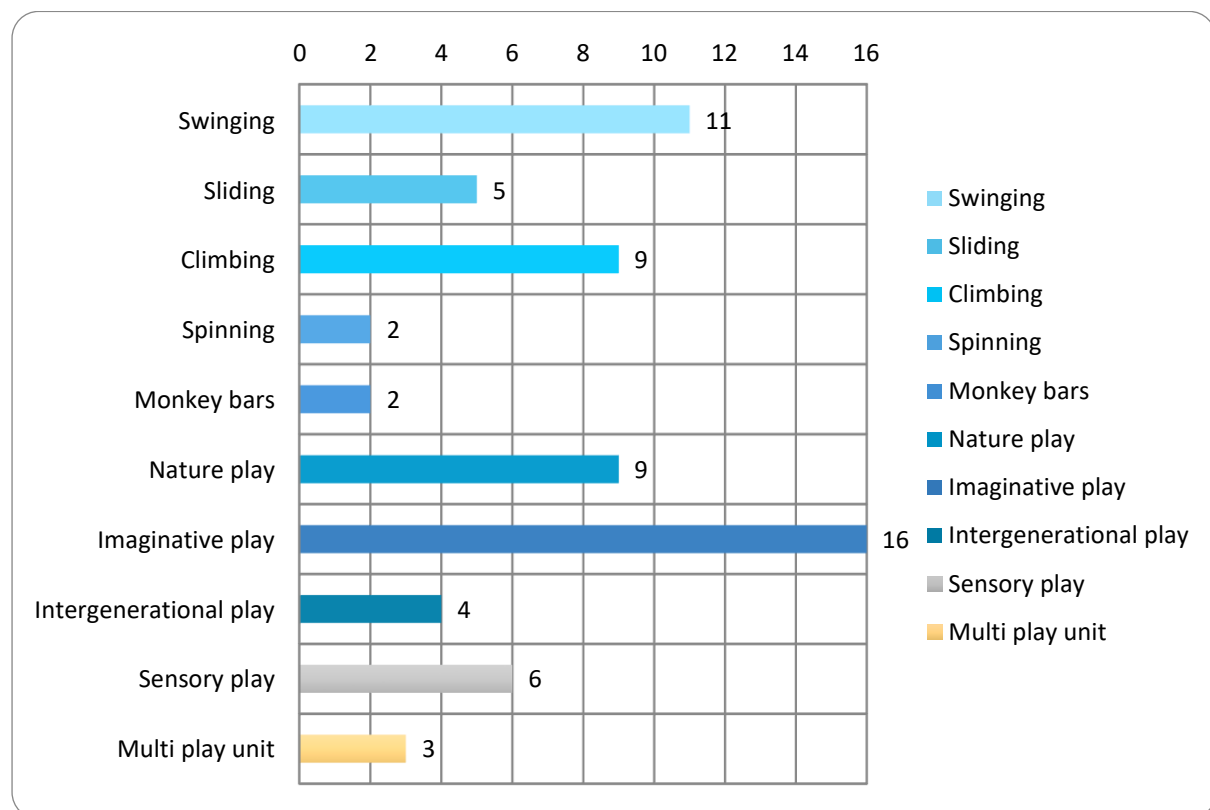
Graph showing responses to the question 'How old are the children/young people you accompany to playgrounds?'



Graph showing responses to the question 'How often do you visit Lion Street Playground?'



Graph showing responses to the question ‘What top three play experiences would you like to see in Lion Street Playground?’



Rose Street Playground

Of the 91 survey participants, 18 provided feedback on Rose Street Playground. There was one email submission.

The opportunities in this upgrade are to replace all existing play equipment.

How is the park currently used?

This playground is used equally by children aged 0–12 years (approximately 44% each) and is also used by older children aged 13–17 years (28%).

Most respondents visit the playground at least a few times a month (56%), while half of respondents visit rarely (44%).

What does the community want to see in the upgrades?

The community would like to see opportunities for swinging, nature play, climbing, spinning, sliding and imaginative play:

- Swinging (10 votes)
- Nature Play (9 votes)
- Climbing (8 votes)
- Spinning (7 votes)
- Sliding (6 votes)
- Imaginative play (6 votes)

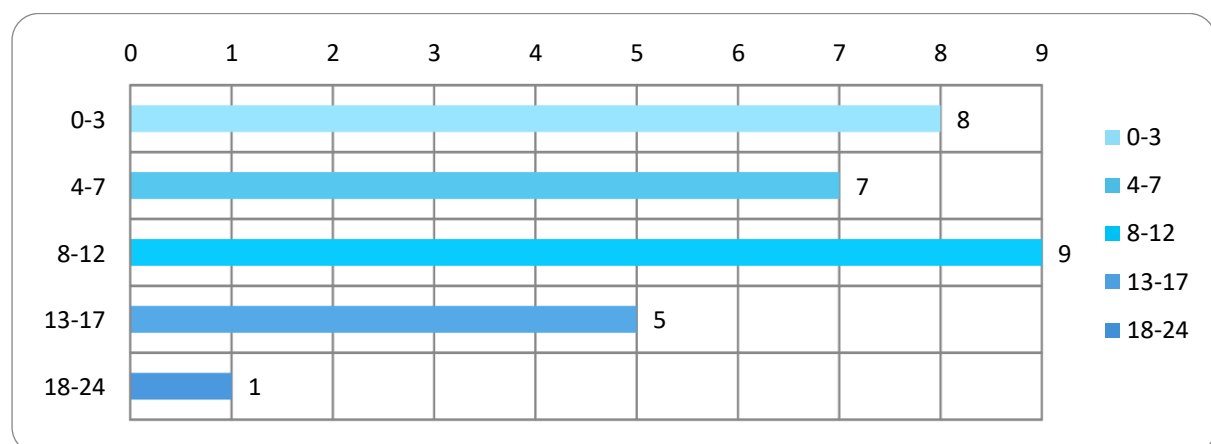
The community listed the following elements when asked 'What do you like most about Rose Street Playground?'

- The park is fenced, keeping the kids safe from traffic
- Open space, grass areas, shade and seats in park
- Small tables and benches
- Proximity to houses

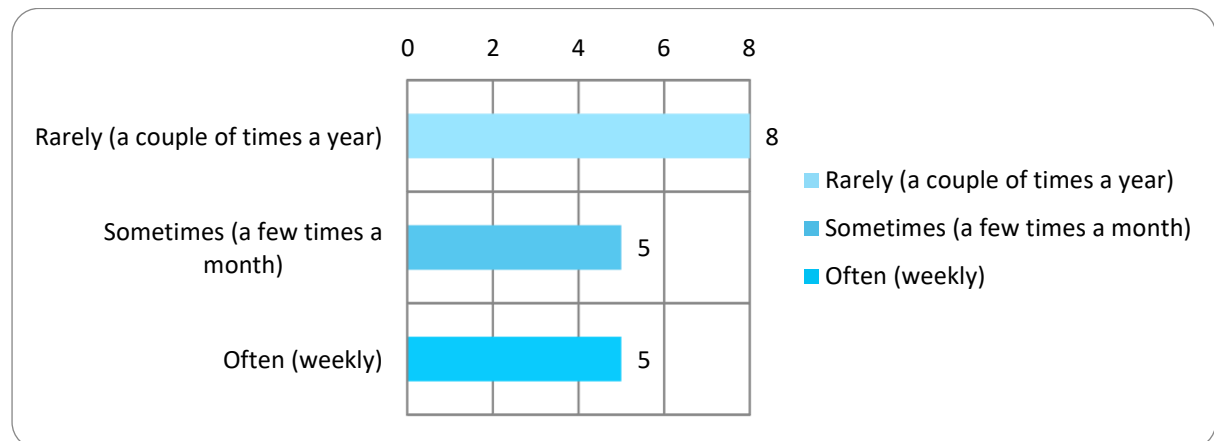
Additional comments include:

- Plant more native plantings to encourage native birds back
- Add table tennis play for intergenerational play
- A multidirectional or large spider web style swing would be great for the primary school aged kids
- Add play for older primary school kids

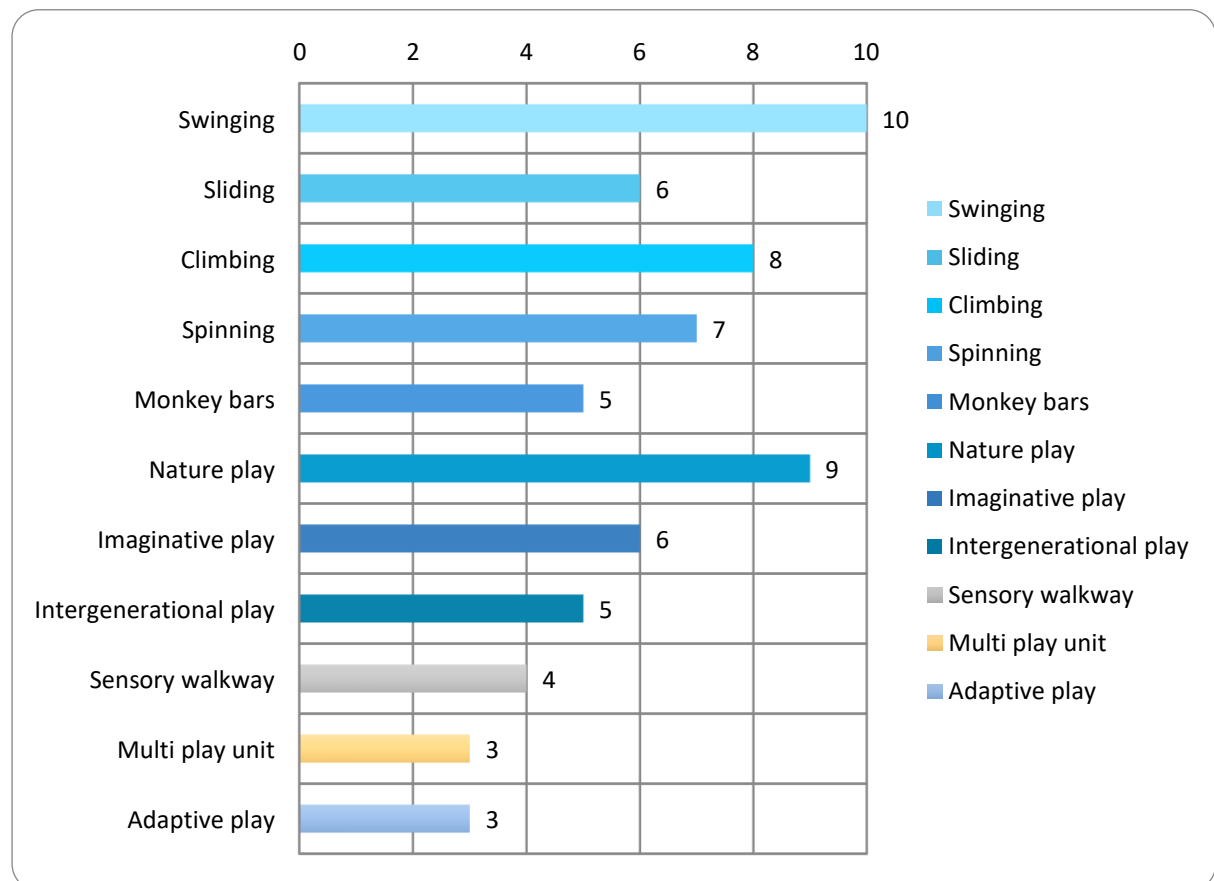
Graph showing responses to the question 'How old are the children/young people you accompany to playgrounds?'



Graph showing responses to the question 'How often do you visit Rose Street Playground?'



Graph showing responses to the question 'What top five play experiences would you like to see at Rose Street Playground?'



John Paton Reserve

Of the 91 survey participants, 16 provided feedback on John Paton Reserve.

The opportunities in this upgrade are to replace all existing play equipment.

How is the park currently used?

This playground is used mostly by children aged 0–7 years (18 participants).

Most respondents visit the playground rarely (56%), while the remainder visit at least a few times a month.

What does the community want to see in the upgrades?

The community would like to see opportunities for nature play, imaginative play, swinging, intergenerational and sensory play.:

- Nature Play (9 votes)
- Imaginative play (8 votes)
- Swinging (6 votes)
- Intergenerational (4 votes)
- Sensory Play (4 votes)

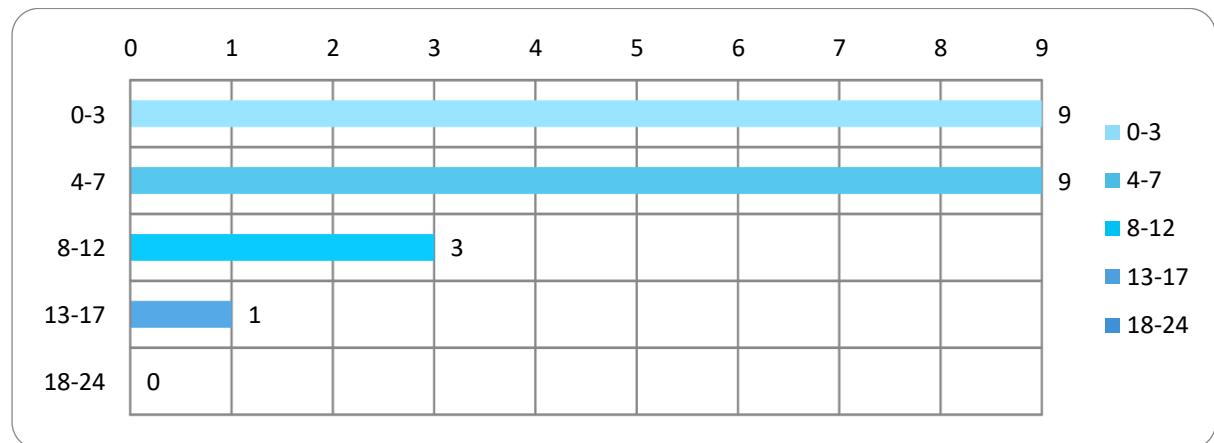
The community listed the following elements when asked ‘What do you like most about John Paton Reserve?’

- Proximity to houses/homes
- The play equipment is accessible for children under 5 years old
- It is next to KU preschool; the children can continue playing after care hours
- Open space, natural and new shade, bubbler and seats in park

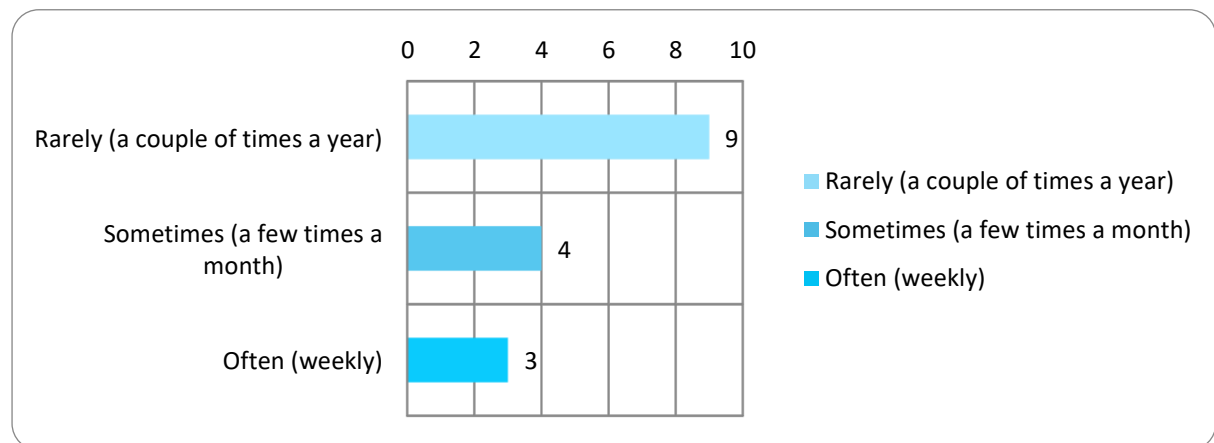
Additional comments include:

- It is a quiet space

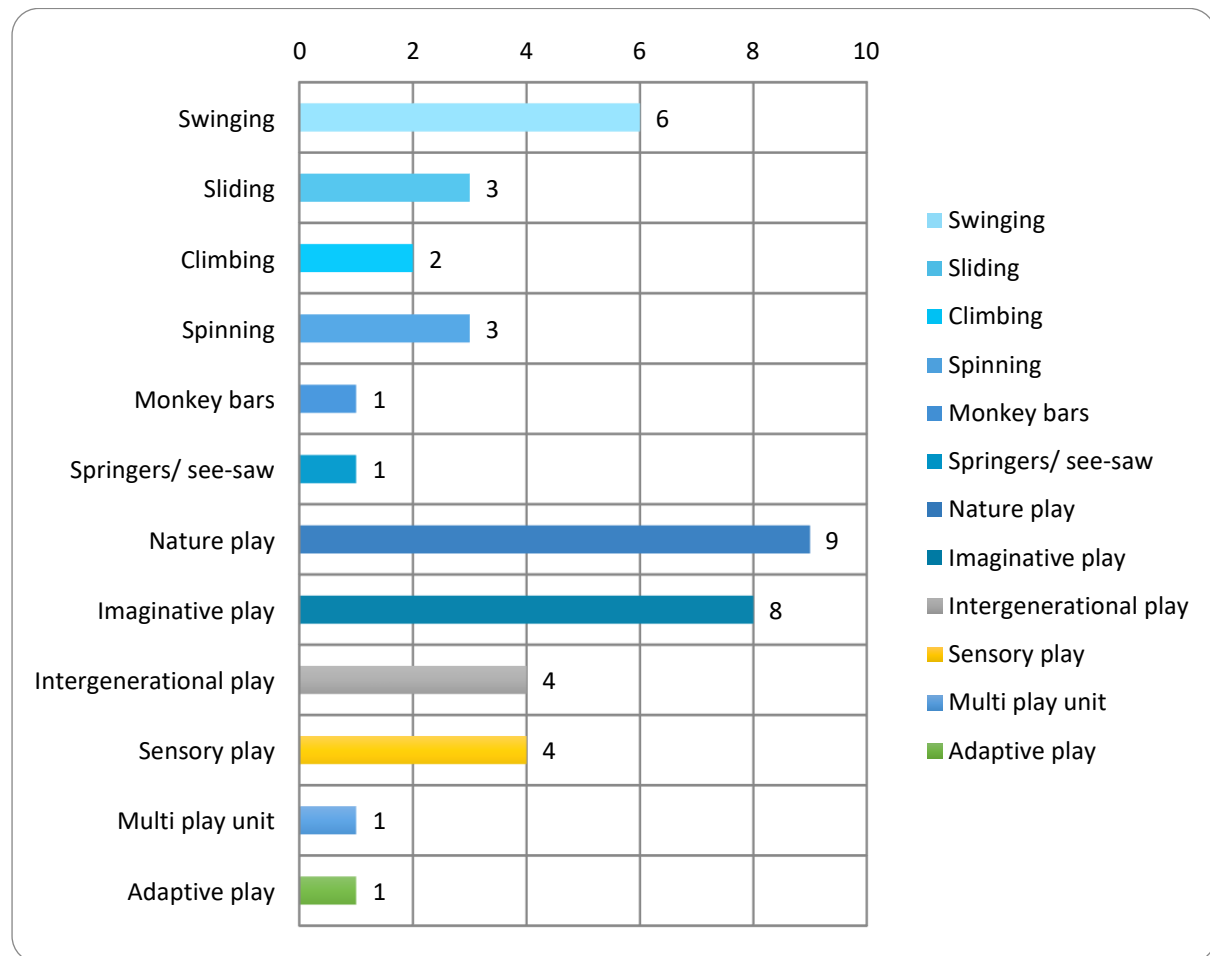
Graph showing responses to the question 'How old are the children/young people you accompany to playgrounds?'



Graph showing responses to the question 'How often do you visit John Paton Reserve?'



Graph showing responses to the question 'What top three play experiences would you like to see at John Paton Reserve?'



Rowe Playground

Of the 91 survey participants, 13 provided feedback on Rowe Playground.

The opportunities in this upgrade are to replace all existing play equipment.

How is the park currently used?

This playground is used mostly by children aged 0–7 years (15 participants) and is also used by older children aged 8–12 years (4 participants). Half of respondents (46%) accompany more than one child at a time to the playground.

Most respondents visit the playground at least a few times a month (62%), while the remaining 38% of respondents visit rarely or never.

What does the community want to see in the upgrades?

The community would like to see opportunities for imaginative play, swinging, multi play unit, climbing, nature play and sensory play:

- Imaginative play (8 votes)
- Swinging (8 votes)
- Multi play unit (7 votes)
- Climbing (5 votes)
- Nature Play (3 votes)
- Sensory play (3 votes)

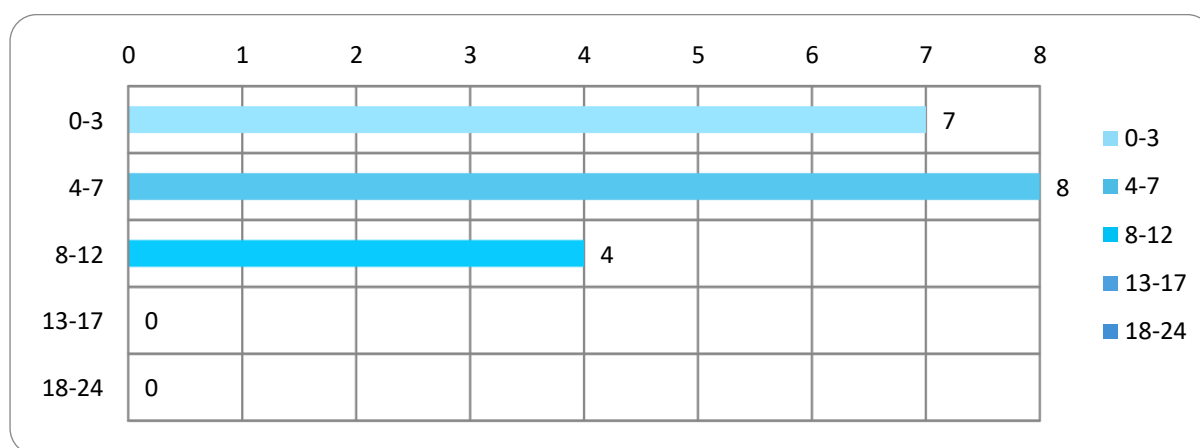
The community listed the following elements when asked 'What do you like most about Rowe Playground?'

- Proximity to train station, can stop and look at the trains and have a play
- Small neighbourhood park which is fenced
- Quiet and convenient
- Proximity to houses/homes

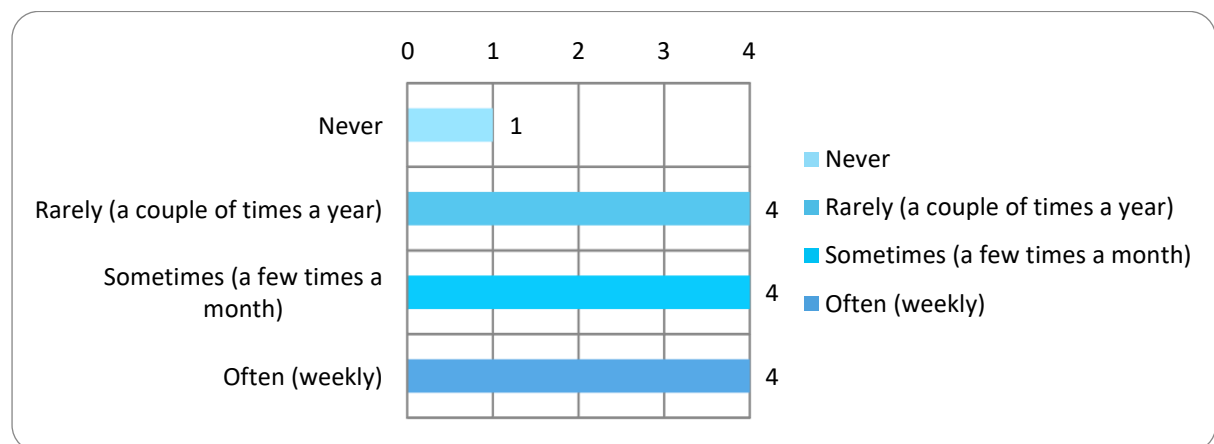
Additional comments include:

- Doesn't get very busy

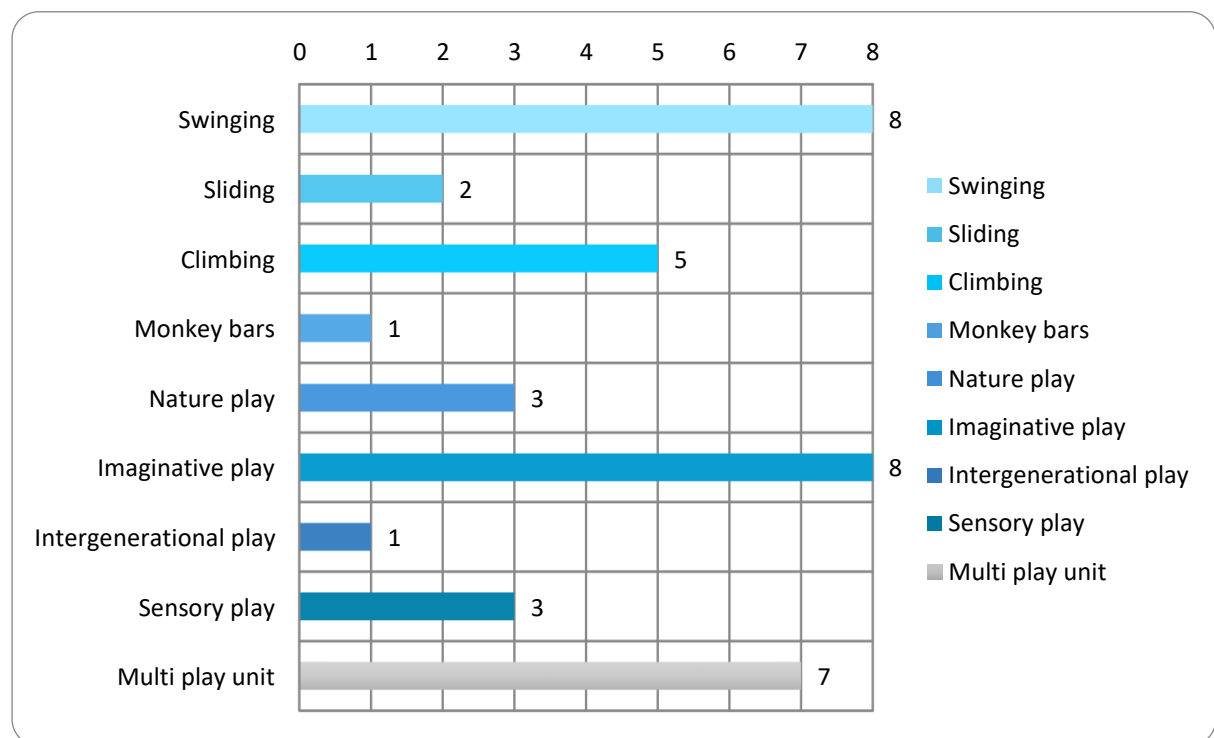
Graph showing responses to the question 'How old are the children/young people you accompany to playgrounds?'



Graph showing responses to the question 'How often do you visit Rowe Playground?'



Graph showing responses to the question 'What top three play experiences would you like to see at Rowe Playground?'



Kendrick Park

Of the 91 survey participants, 30 provided feedback Kendrick Park. There were three email submissions.

The opportunities are to remove the existing play equipment and replace with new. We can improve the accessibility from the carpark and improve the connection between the two play spaces.

How is the park currently used?

This playground is used mostly by children aged 4-7 years (20 participants) and 0-3 years (17 participants). The playground is also used by older children aged 8-12 years (12 participants). Most respondents visit the playground with at least two children at a time (60%).

Most respondents visit the playground at least a few times a month (83%), of which 40% visit weekly.

What does the community want to see in the upgrades?

The community would like to see opportunities for imaginative play, climbing, nature play, swinging and sensory play:

- Imaginative play (18 votes)
- Climbing (13 votes)
- Nature Play (12 votes)
- Swinging (11 votes)
- Sensory play (8 votes)

The community listed the following elements when asked 'What do you like most about Kendrick Park?'

- It is next to the river, it has picnic and BBQ facilities
- Access to shade and toilets
- Climbing the rocks, monkey bars and swing
- Net climbing, pole and slide
- Large green space and river views

Additional comments include:

New play activities:

- Trampoline for multiple users
- Provide high monkey bars

- Provide sensory play for younger kids and equipment for all ages
- Provide a basketball ring

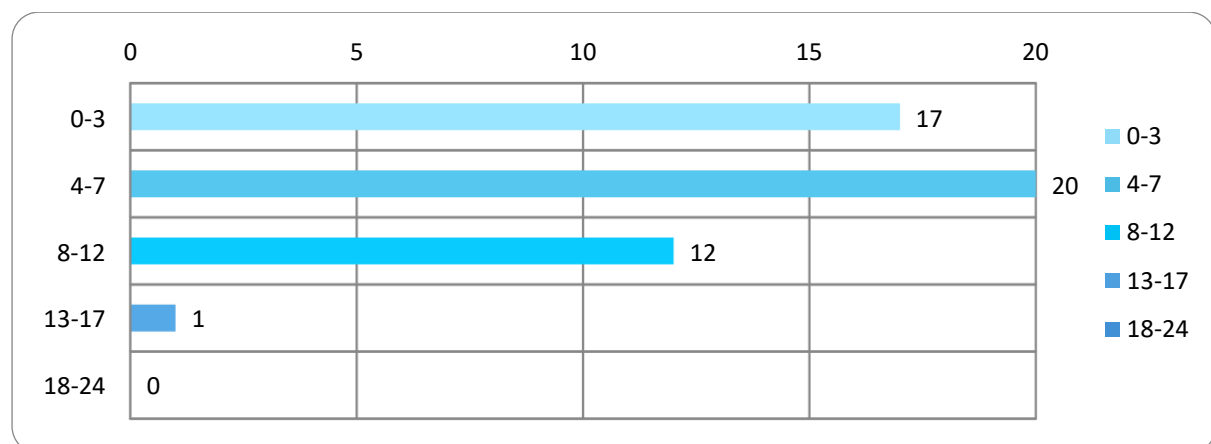
Identity:

- Use natural materials, reflect the park and indigenous history
- Rename the park

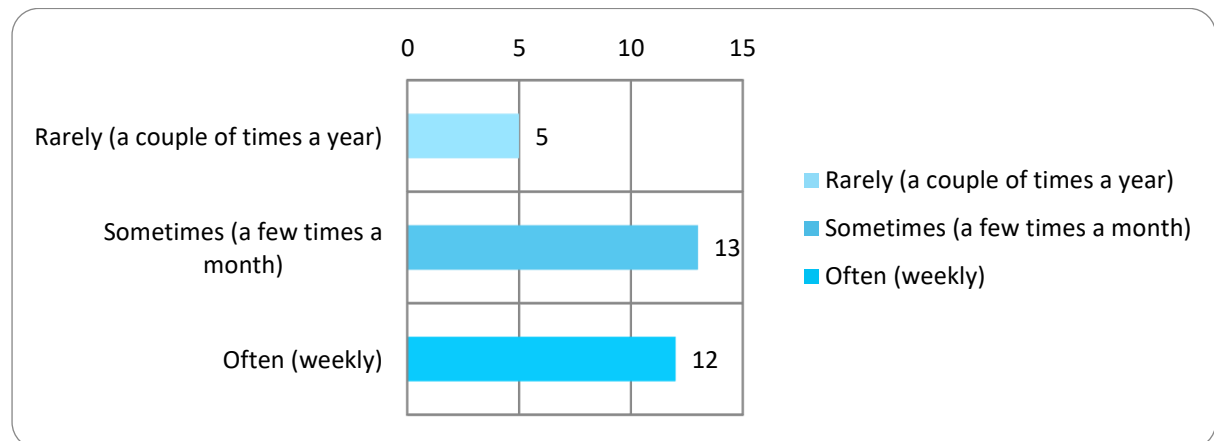
Others:

- It has been used as an exercise gym and was dirty, prefer to keep the playground for younger children and provide a separate outdoor gym
- Provide outdoor gym to encourage being active and get fit
- Bird watching and looking for crabs in the mangroves in the river. A jetty would be great
- The proximity of the carpark and bike lane is a safety issue
- Fence along the highway
- Improve picnic and recycling facilities

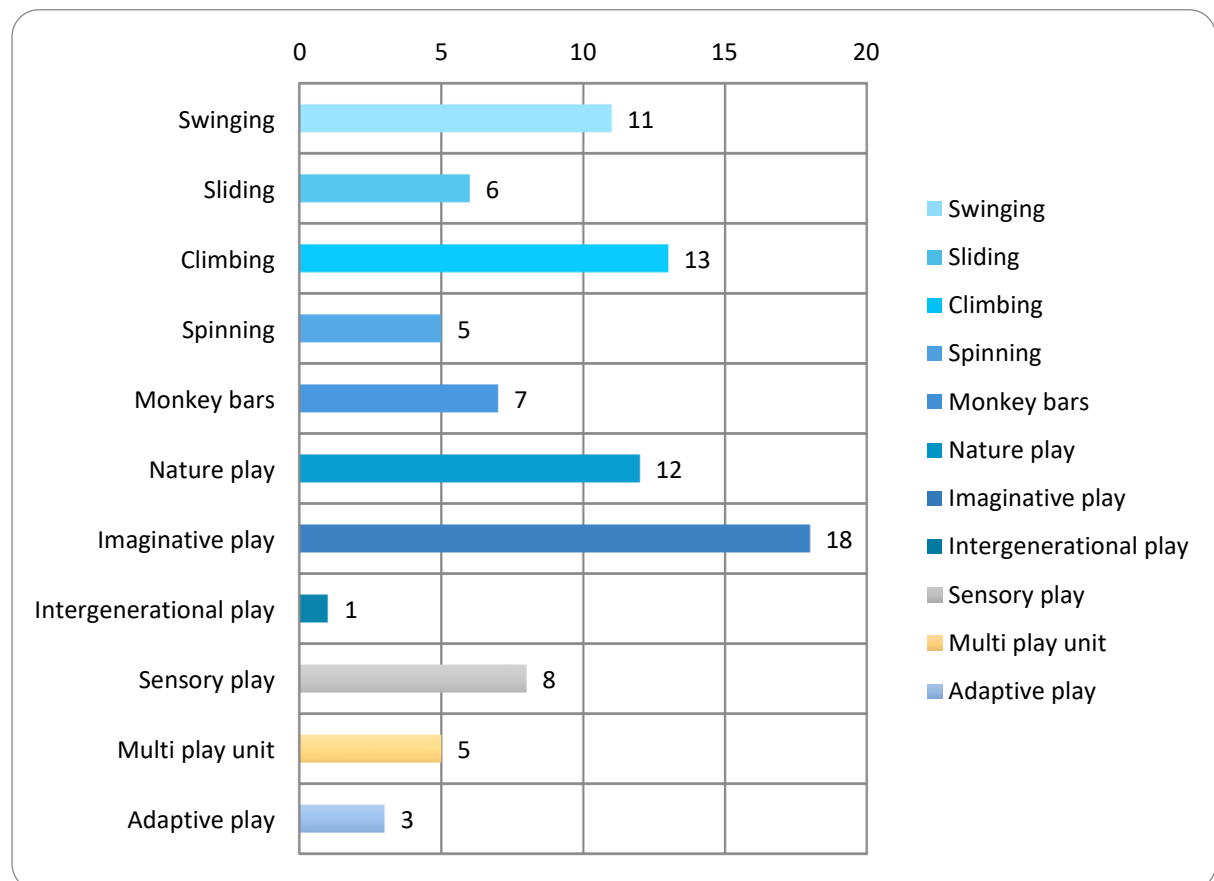
Graph showing responses to the question 'How old are the children/young people you accompany to playgrounds?'



Graph showing responses to the question 'How often do you visit Kendrick Park?'



Graph showing responses to the question 'What top three play experiences would you like to see at Kendrick Park?'



What happens next

Feedback from the community has provided valuable insight into desires and priorities for the playground upgrades and will inform the design of the playground and equipment selection.

We will incorporate the ideas into the design brief where possible taking into account budget and practical considerations. The final designs will be available to view on the Your Say Inner West project page.

Everyone who provides feedback will be updated via email and on the Your Say Inner West project page.