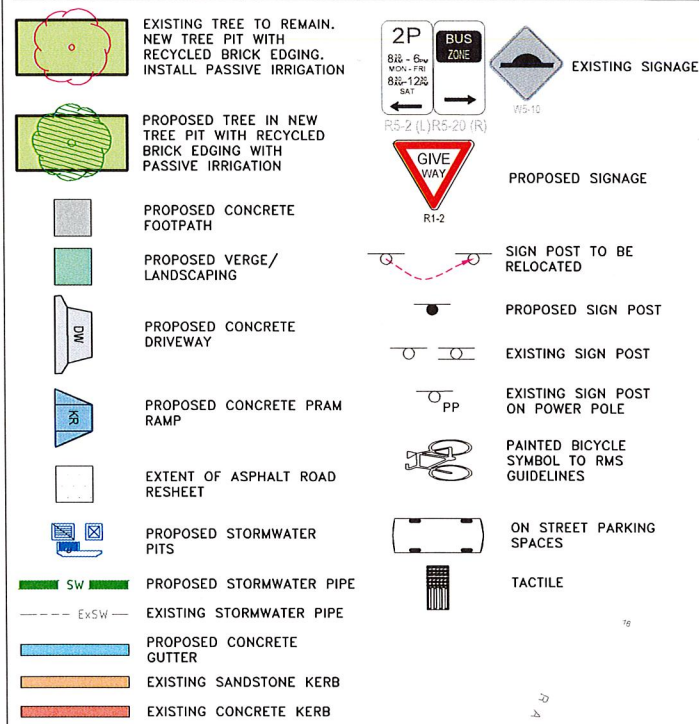
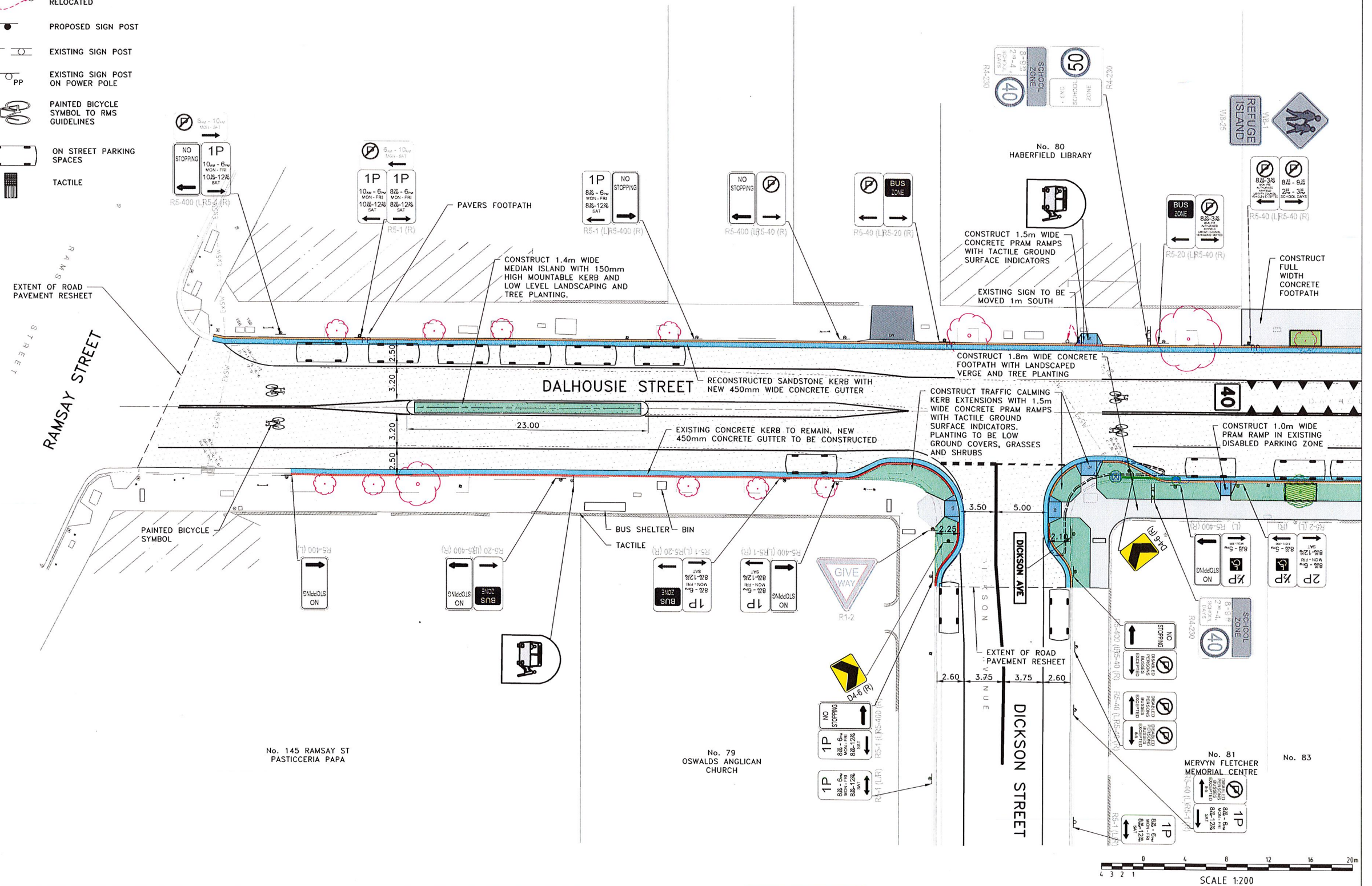


# LEGEND

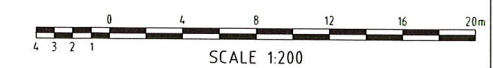
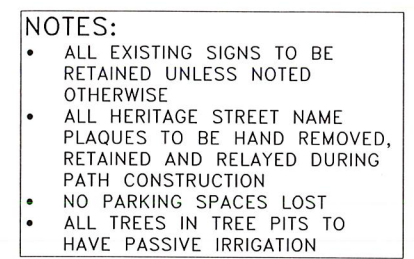


- NOTES:**
- ALL EXISTING SIGNS TO BE RETAINED UNLESS NOTED OTHERWISE
  - ALL HERITAGE STREET NAME PLAQUES TO BE HAND REMOVED, RETAINED AND RELAYED DURING PATH CONSTRUCTION
  - NO PARKING SPACES LOST
  - ALL TREES IN TREE PITS TO HAVE PASSIVE IRRIGATION



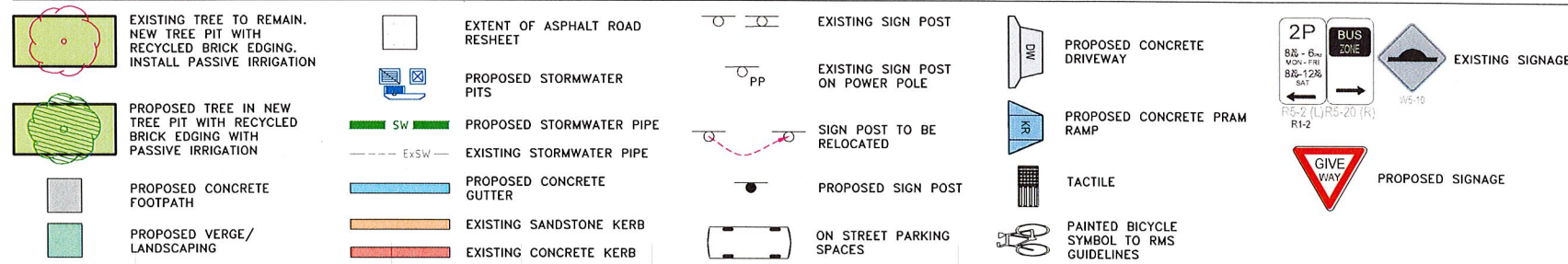
CHECKED & APPROVED		TRAFFIC COMMITTEE APPROVED		STANDARDS OR GUIDELINES REFERRED TO		S.R.A. / SURV. GEN.		EXISTING SERVICES		DATUM		INNER WEST COUNCIL		FILE NO.	SHEET NO.
DESIGNED		2019		AS 1428.4-2009 • AS 1742.13-2009		R.T.A.		TELSTRA		A. H. D.		DALHOUSIE STREET, HABERFIELD. RAMSAY ST TO BOOMERANG ST		10055 - 1	
APPROVED FOR CONSTRUCTION		R DURHAM JULY 2019		AS 2890.6-2009 • AS 1742.10-2009		A.G.L. / SHELL PIPELINES		OPTUS		N.T.S		ROAD RESURFACING AND ROAD RESERVE CHANGES		REVISION	
DRAWN		R DURHAM JULY 2019		AS 2890.5-1993		SYDNEY WATER		NBN		3 26.08.19 ISSUED FOR COMMUNITY CONSULTATION		CONSULTATION PLAN SHEET 1		CAD FILE	
				SYDNEY ELECTRICITY		TELSTRA / OPTUS		PIPE NETWORKS		2 05.08.19 ISSUED FOR COMMUNITY CONSULTATION					
				ELEC. CABLES		NOTICE OF ENTRY		WATER		1 28.06.19 ISSUED FOR COMMUNITY CONSULTATION					
				ELEC. CABLES		KERB & GUTTER		GAS		APPROV.					
				RAILCORP		NOTICES		ELEC. CABLES							
								RAILCORP HV							
								STORM WATER							





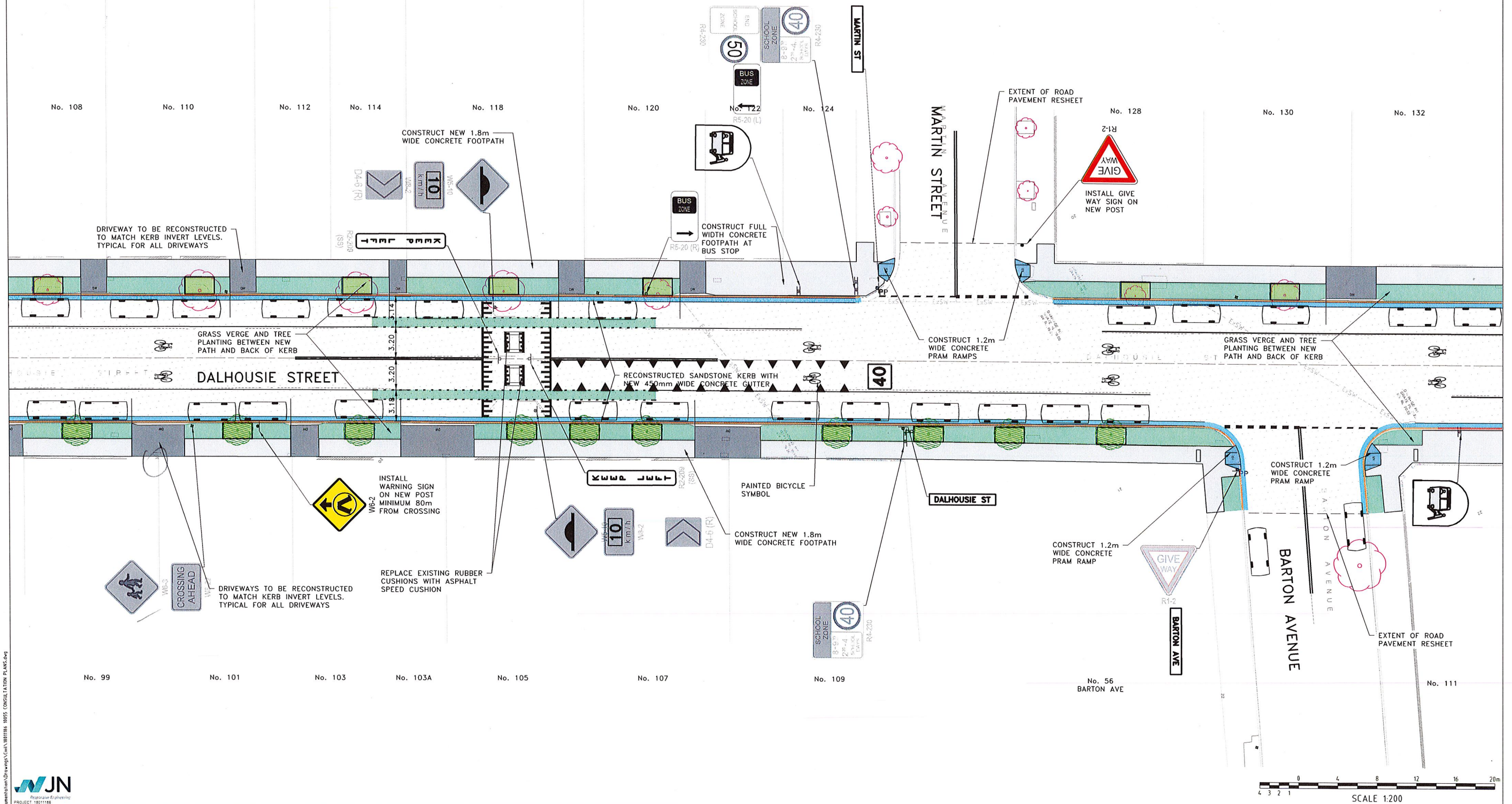


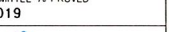
# LEGEND



## NOTES:

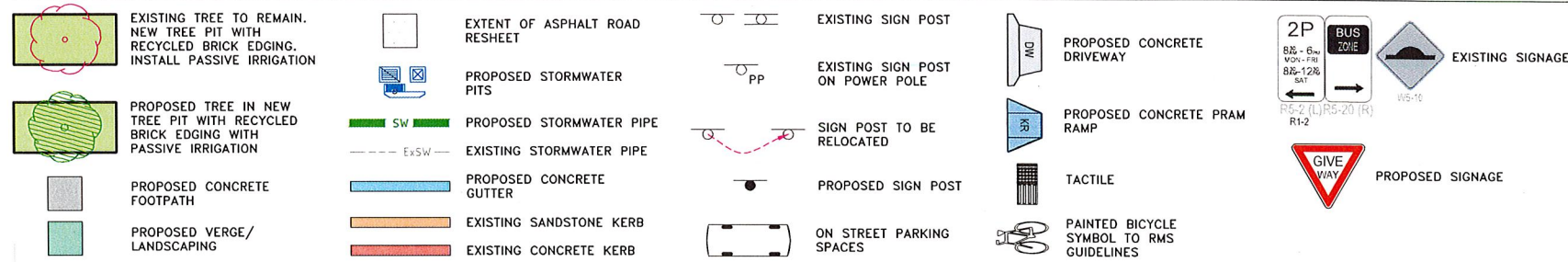
- ALL EXISTING SIGNS TO BE RETAINED UNLESS NOTED OTHERWISE
- ALL HERITAGE STREET NAME PLAQUES TO BE HAND REMOVED, RETAINED AND RELAYED DURING PATH CONSTRUCTION
- NO PARKING SPACES LOST
- ALL TREES IN TREE PITS TO HAVE PASSIVE IRRIGATION



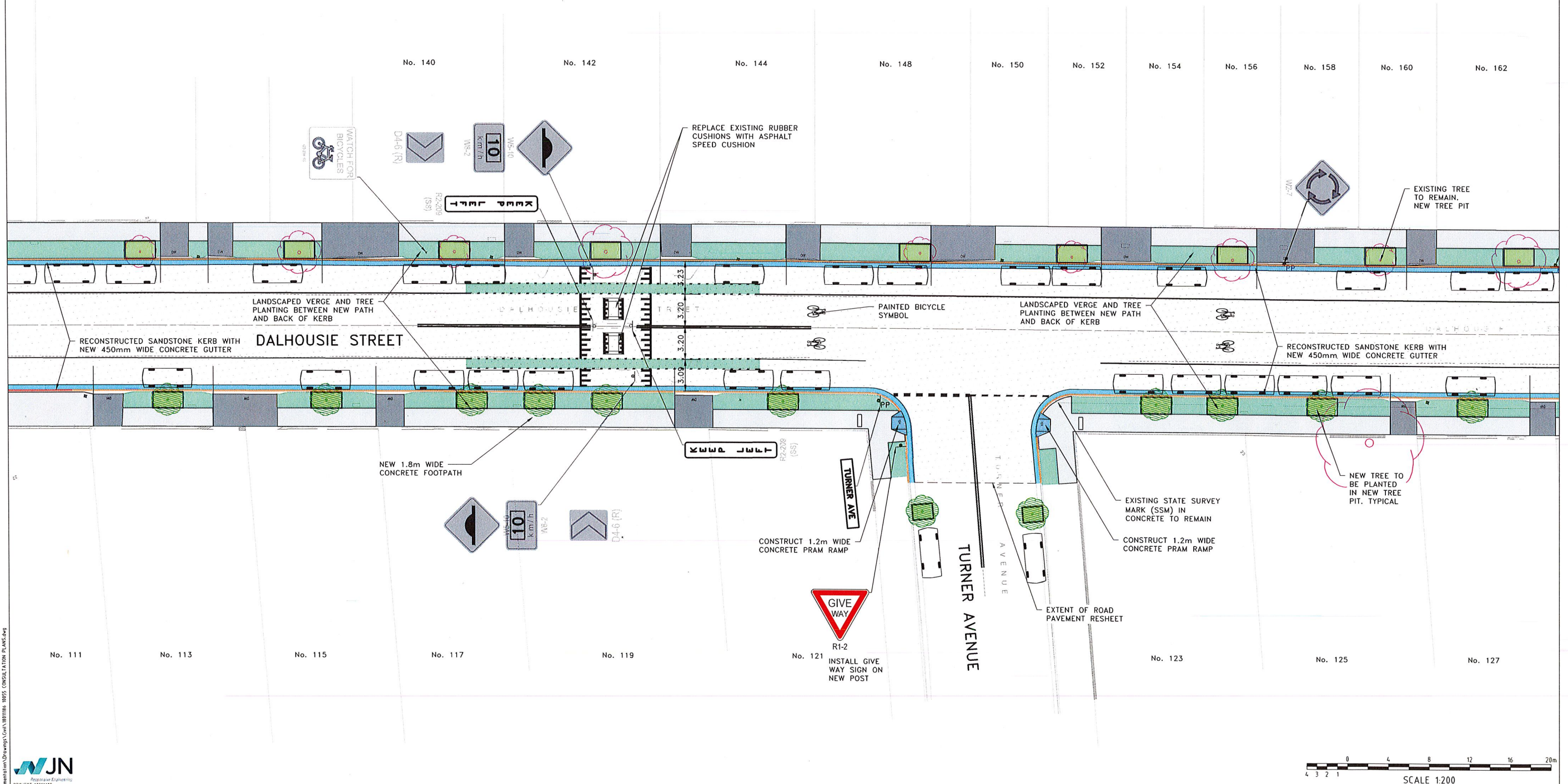
CHECKED & APPROVED	SURVEYED & DRAFTED GEOMETRA 08 FEB 2019	TRAFFIC COMMITTEE APPROVED 2019	 INNER WEST COUNCIL	STANDARDS OR GUIDELINES REFERRED TO • AS 1428.4-2009 • AS 1742.13-2009 • AS 2890.6-2009 • AS 1742.10-2009 • AS 2890.5-1993	S.R.A. / SURV. GEN. R.T.A. A.G.L. / SHELL PIPELINES	EXISTING SERVICES TELSTRA OPTUS NBN PIPE NETWORKS WATER GAS ELEC. CABLES RAILCORP HV STORM WATER	DATUM A. H. D.	SCALES N.T.S.	INNER WEST COUNCIL				FILE NO.	SHEET NO.			
	APPROVED FOR CONSTRUCTION								DESIGNED R DURHAM JULY 2019	DRAWN R DURHAM JULY 2019	SERVICES AFFECTED SYDNEY WATER SYDNEY ELECTRICITY GAS ELEC. CABLES RAILCORP	QUANTITIES TELSTRA / OPTUS WATER GAS ELEC. CABLES RAILCORP	NOTICES DATE	DALHOUSIE STREET, HABERFIELD. RAMSAY ST TO BOOMERANG ST		PLAN NO.	REVISION
														ROAD RESURFACING AND ROAD RESERVE CHANGES		10055 - 1	
														CONSULTATION PLAN SHEET 3		CAD FILE	



# LEGEND



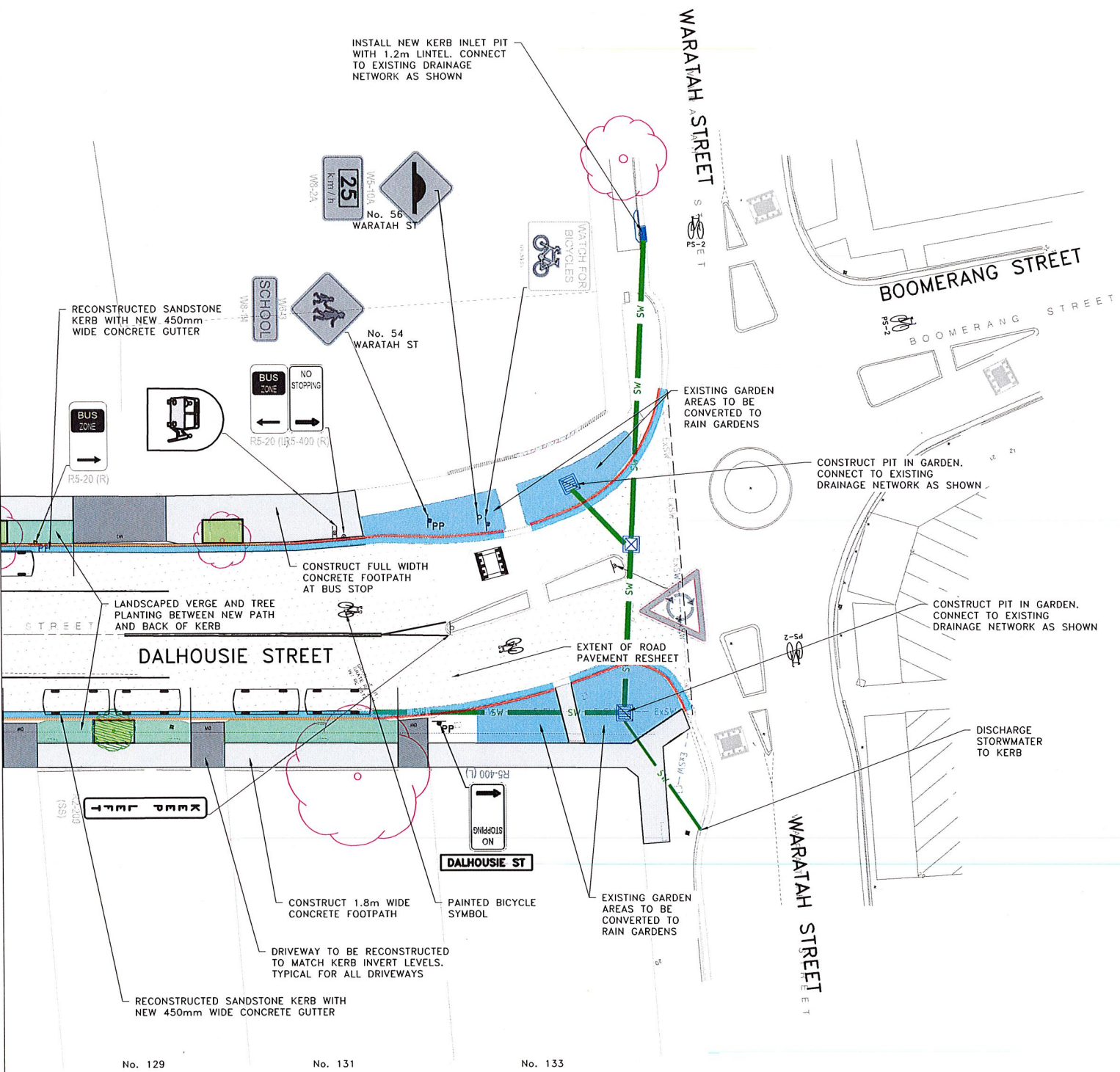
- NOTES:**
- ALL EXISTING SIGNS TO BE RETAINED UNLESS NOTED OTHERWISE
  - ALL HERITAGE STREET NAME PLAQUES TO BE HAND REMOVED, RETAINED AND RELAYED DURING PATH CONSTRUCTION
  - NO PARKING SPACES LOST
  - ALL TREES IN TREE PITS TO HAVE PASSIVE IRRIGATION



CHECKED & APPROVED  DESIGNED APPROVED FOR CONSTRUCTION	SURVEYED & DRAFTED <b>GEOMETRA</b> 08 FEB 2019 DRAWN JULY 2019	TRAFFIC COMMITTEE APPROVED 2019 INNER WEST COUNCIL	STANDARDS OR GUIDELINES REFERRED TO • AS 1428.4-2009 • AS 1742.13-2009 • AS 2890.6-2009 • AS 1742.10-2009 • AS 2890.5-1993 SERVICES AFFECTED TELSTRA / OPTUS SYDNEY WATER SYDNEY ELECTRICITY GAS ELEC. CABLES RAILCORP	S.R.A. / SURV. GEN. R.T.A. A.G.L. / SHELL PIPELINES SYDNEY WATER TELSTRA / OPTUS SYDNEY ELECTRICITY NOTICE OF ENTRY KERB & GUTTER NOTICES DATE	EXISTING SERVICES TELSTRA ----- T ----- OPTUS ----- O ----- NBN ----- NBN ----- PIPE NETWORKS ----- PN ----- WATER ----- W ----- GAS ----- G ----- ELEC. CABLES ----- E ----- RAILCORP HV ----- hv ----- STORM WATER ----- ExSW -----	DATUM A. H. D. SCALES N.T.S. ISSUED FOR COMMUNITY CONSULTATION 2 05.08.19 1 28.06.19 AND DATE DESCRIPTION APPROV	INNER WEST COUNCIL DALHOUSIE STREET, HABERFIELD. RAMSAY ST TO BOOMERANG ST ROAD RESURFACING AND ROAD RESERVE CHANGES CONSULTATION PLAN SHEET 4 PROJECT NO. 301296	FILE NO. SHEET NO. 4 / 5 PLAN NO. 10055 - 1 REVISION CAD FILE
---	--	--	--	---	--	---	--	---



- NOTES:
- ALL EXISTING SIGNS TO BE RETAINED UNLESS NOTED OTHERWISE
  - ALL HERITAGE STREET NAME PLAQUES TO BE HAND REMOVED, RETAINED AND RELAYED DURING PATH CONSTRUCTION
  - NO PARKING SPACES LOST
  - ALL TREES IN TREE PITS TO HAVE PASSIVE IRRIGATION



**LEGEND**

	EXISTING TREE TO REMAIN. NEW TREE PIT WITH RECYCLED BRICK EDGING. INSTALL PASSIVE IRRIGATION		EXISTING SIGNAGE
	PROPOSED TREE IN NEW TREE PIT WITH RECYCLED BRICK EDGING WITH PASSIVE IRRIGATION		PROPOSED SIGNAGE
	PROPOSED CONCRETE FOOTPATH		SIGN POST TO BE RELOCATED
	PROPOSED VERGE/ LANDSCAPING		PROPOSED SIGN POST
	PROPOSED CONCRETE DRIVEWAY		EXISTING SIGN POST
	PROPOSED CONCRETE PRAM RAMP		EXISTING SIGN POST ON POWER POLE
	EXTENT OF ASPHALT ROAD RESHEET		PAINTED BICYCLE SYMBOL TO RMS GUIDELINES
	PROPOSED STORMWATER PITS		ON STREET PARKING SPACES
	PROPOSED STORMWATER PIPE		TACTILE
	EXISTING STORMWATER PIPE		
	PROPOSED CONCRETE GUTTER		
	EXISTING SANDSTONE KERB		
	EXISTING CONCRETE KERB		