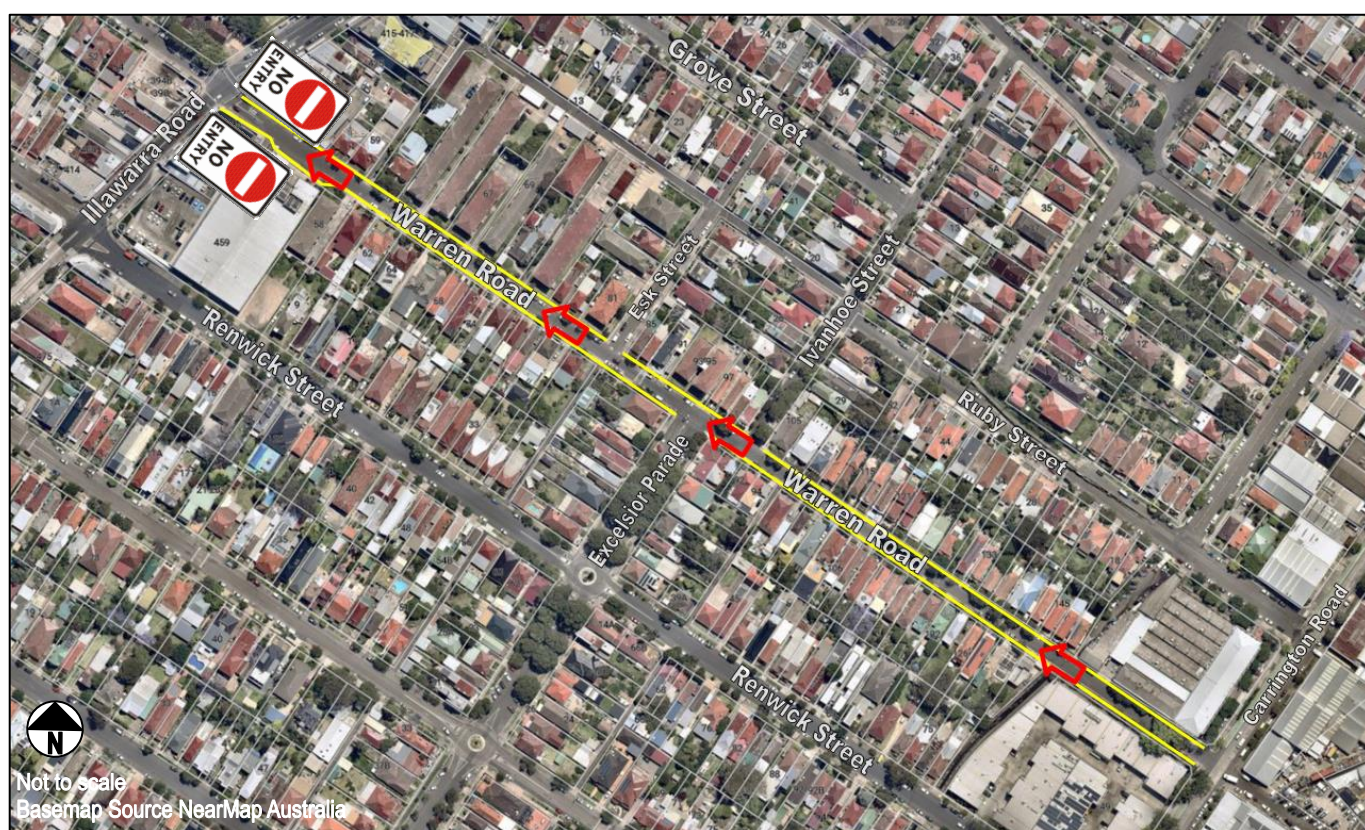




# Improving traffic safety in Warren Road

Council has collected traffic data and investigated traffic options for Warren Road, Marrickville and surrounding streets. Three options are presented below that could improve the existing traffic and safety issues in Warren Road.

## Option A: One way westbound traffic in Warren Road

This option would convert Warren Road to one way westbound traffic flow between Carrington Road and Illawarra Road.



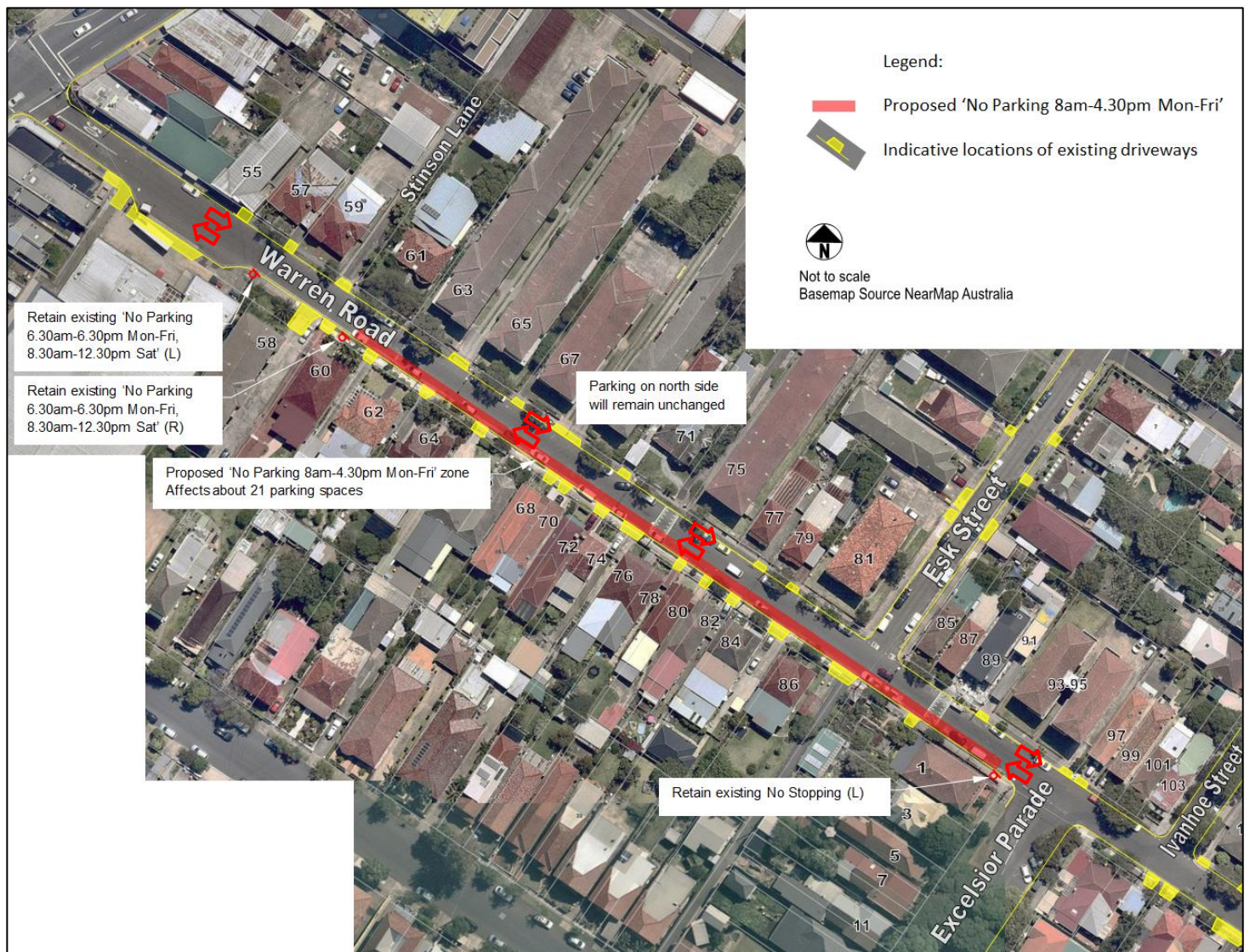
Option A: One way westbound traffic in Warren Road	
 Advantages	 Disadvantages
<ul style="list-style-type: none"> <li>Improved traffic flow in Warren Road</li> <li>Parking could be restored on south side of Warren Road between Carrington Road and Excelsior Road</li> <li>Woolworth truck movements in Warren Road could be halved</li> <li>Overall traffic volume may decrease</li> </ul>	<ul style="list-style-type: none"> <li>Residents will travel longer distances</li> <li>Eastbound traffic flow will likely be diverted to Renwick Street</li> <li>Vehicles speeds could increase</li> <li>Trucks from industrial area could increase</li> <li>Truck load limit in Renwick Street will need to be lifted to enable Woolworth truck access back to Carrington Road</li> </ul>



### Option B: Part-Time 'No Parking' restrictions on south side of Warren Road between Illawarra Road and Excelsior Parade, angle parking in Grove Street

This option would retain two way traffic in Warren Road and extend the part time parking restrictions already in place and would improve traffic flow. To offset the loss of 21 spaces, it is proposed to establish angle parking in Grove Street, which would increase parking supply by 21 spaces.



Parking Restrictions on south side of Warren Road:





Proposed 90° angle parking in Grove Street:

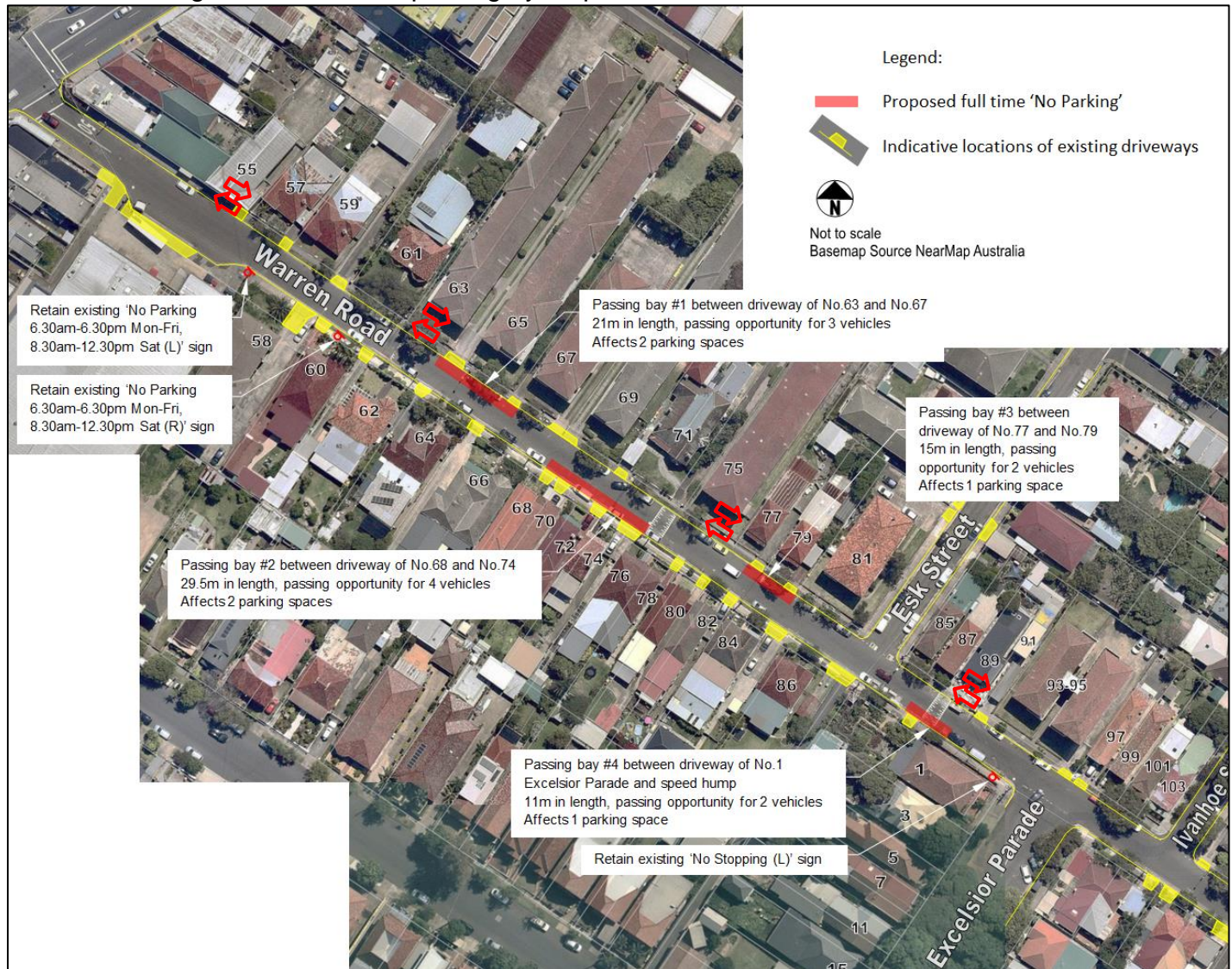




Option B: Part time parking restrictions on south side of Warren Road, angle parking in Grove Street	
 Advantages	 Disadvantages
<ul style="list-style-type: none"> <li>Improved traffic flow in Warren Road</li> <li>Road layout will be more consistent with remaining section of Warren Road</li> <li>Minimal traffic diverted to neighbouring streets</li> <li>Traffic speeds in Warren Road would be similar to existing</li> <li>Traffic speeds in Grove Street should decrease</li> </ul>	<ul style="list-style-type: none"> <li>Loss of 21 on-street parking spaces in Warren Road during daytime Monday to Friday</li> <li>Woolworths deliveries and truck movements would remain unchanged</li> <li>Warren Road traffic could increase due to bypass traffic</li> <li>Weekend traffic conditions will remain unchanged</li> </ul>



## Option C: Provide passing bays in Warren Road between Illawarra Road and Excelsior Parade

This option will provide areas to allow easier two way passing to improve traffic conditions during busy times. The passing bays will be signposted as full time 'No Parking' and will reduce parking by 6 spaces.



Option C: Provide passing bays in Warren Road between Illawarra Road and Excelsior Parade	
 Advantages	 Disadvantages
<ul style="list-style-type: none"> <li>Some improvement to two-way traffic flow in Warren Road</li> <li>Minimal traffic diverted to neighbouring streets</li> <li>Vehicle speeds should remain low or unchanged</li> </ul>	<ul style="list-style-type: none"> <li>Loss of 6 on-street parking spaces in Warren Road</li> <li>Woolworths deliveries and truck movements will remain unchanged</li> <li>Warren Road could be perceived to be an attractive option for bypass traffic</li> </ul>